

For Sale

Last Lot Remaining

\$220,000



## Regent Park

701 Regent Park Court  
Greenville, South Carolina 29607

### Property Highlights

- Last lot remaining in the park
- Pad site to accommodate up to 4,385 SF of building
- Located at Regent Office Park
- Regent Park main entrance has a traffic light to accommodate ingress/egress
- Beautifully landscaped with park-like setting
- Convenient to I-385
- Ample surface parking
- Sale price: \$220,000



For more information

**Scott Jones, SIOR**

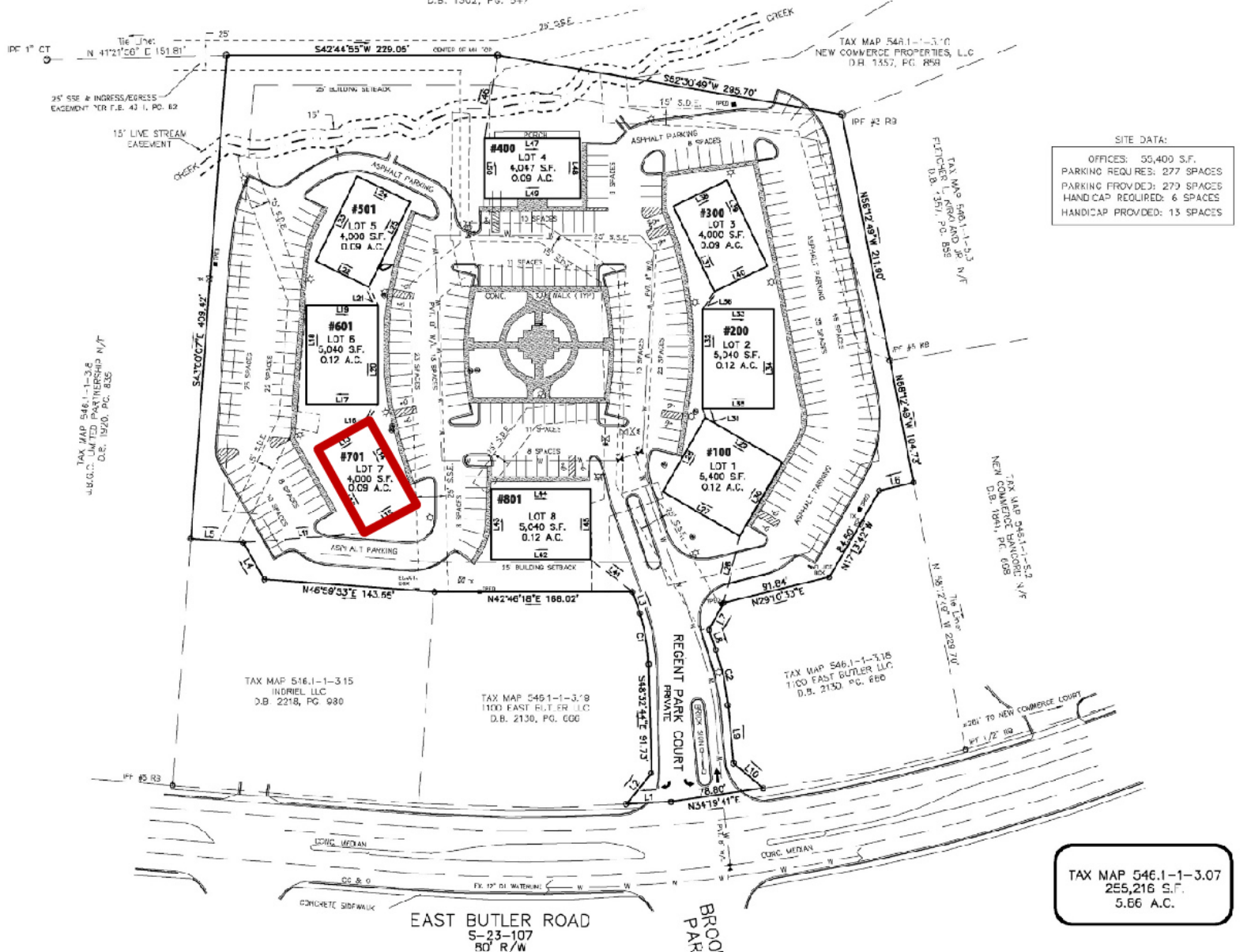
O: 864 678 5921 | C: 864 640 2727  
sjones@naiearlefurman.com

**John Stathakis, II**

O: 864 678 5931 | C: 864 494 1319  
jstathakis@naiearlefurman.com

# Site Plan

TAX MAP 546.1-1-3  
 N/CNE OF NORTH CAROLINA N/F  
 D.B. 1302, PG. 547



**SITE DATA:**  
 OFFICES: 55,400 S.F.  
 PARKING REQUIRES: 277 SPACES  
 PARKING PROVIDED: 270 SPACES  
 HANDICAP REQUIRED: 6 SPACES  
 HANDICAP PROVIDED: 13 SPACES

**TAX MAP 546.1-1-3.07**  
 255,216 S.F.  
 5.66 A.C.

**PRECISION**  
**LAND SURVEYING, INC.**  
 351 FRANK WAY GREENVILLE, SC 29607  
 (864) 677-8667 Fax: (864) 677-1940  
 PROJECT NO. 02163