

UPPER  
EAST SIDE

NEW YORK  
NY

# 1641 SECOND AVENUE



# SPACE DETAILS

## LOCATION

Northwest corner of East 85th Street

## APPROXIMATE SIZE

Ground Floor	1,850 SF
Basement	1,850 SF
Total	3,700 SF

## CEILING HEIGHT

Ground Floor	12 FT
--------------	-------

## FRONTAGE

101 FT of wraparound

## TERM

Negotiable

## POSSESSION

Arranged

## SITE STATUS

Currently The Daisy

## NEIGHBORS

CVS pharmacy, Capital One, Chase, The Vitamin Shoppe, Fairway, Five Mile Stone, Bua Thai Ramen & Robata Grill, Equinox, Heidelberg, Green Kitchen, Whole Foods Market, Shake Shack and Urban Outfitters

## COMMENTS

Fully-built restaurant space with a 16-seat bar

Sidewalk seating permitted for up to 44-seats

Independent entrance with storefront on East 85th Street

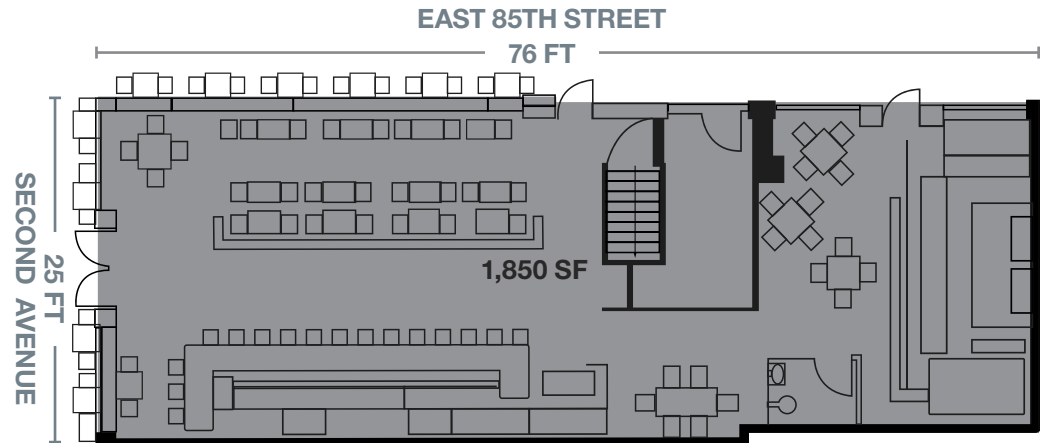
Stand-alone bar ideal for private events

Dense affluent residential population

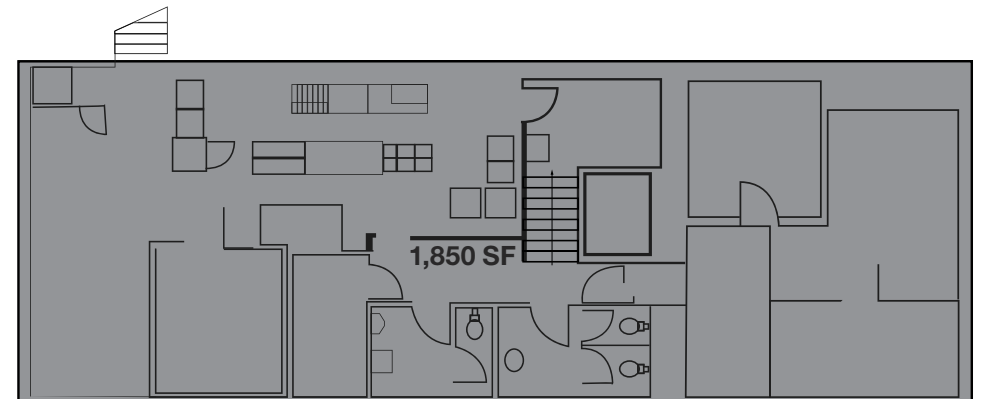
The average household income within a half mile radius is \$209,205

One block from the  train at 86th Street

## GROUND FLOOR



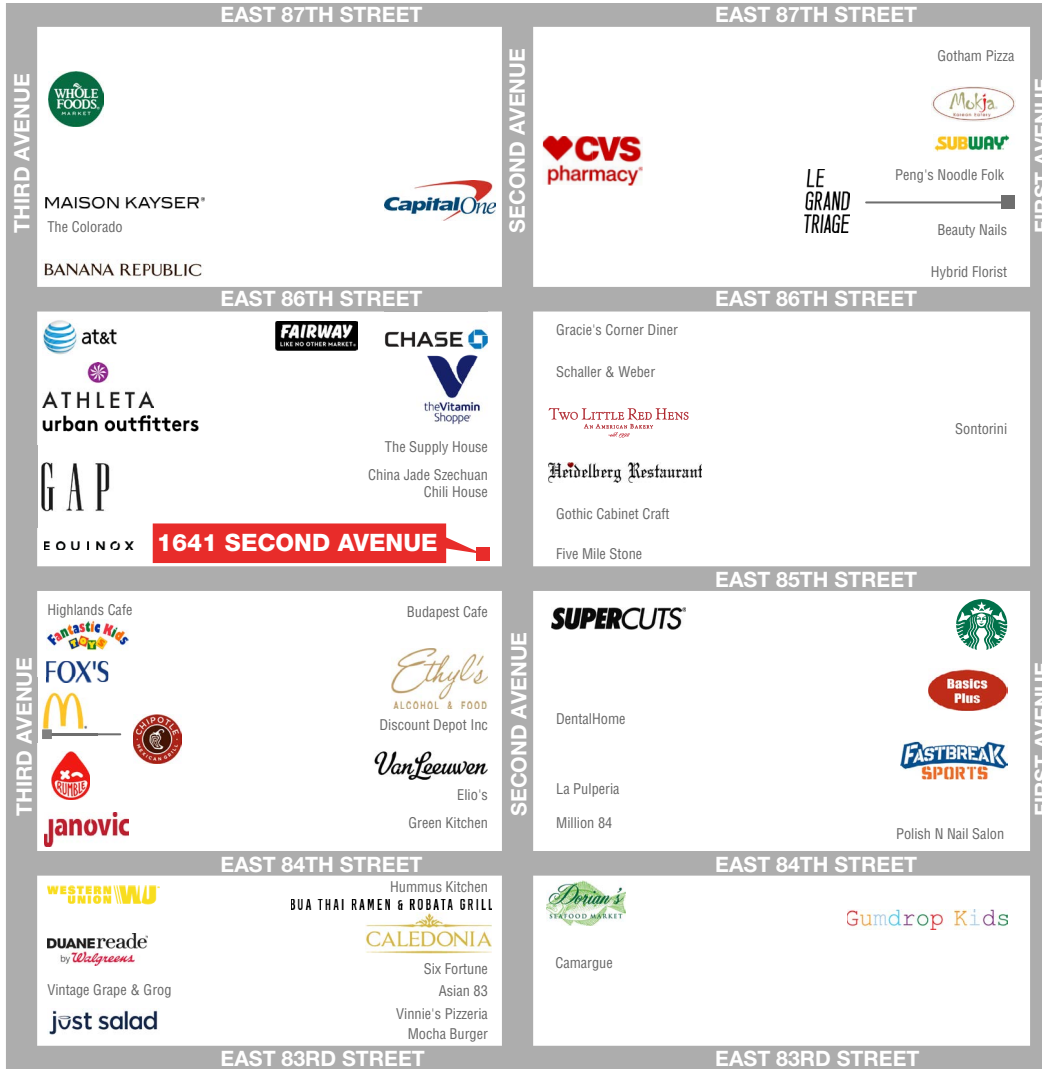
## BASEMENT



# ADDITIONAL IMAGES



# AREA RETAIL



➕ COMING SOON

## CONTACT EXCLUSIVE AGENTS

**BRADLEY SOME**  
212.916.3385  
bradley.some@ngkf.com

**JASON PRUGER**  
212.372.2092  
jpruger@ngkf.com



NGKF.COM

© 2019 NEWMARK KNIGHT FRANK RETAIL. The information contained herein has been obtained from sources deemed reliable but has not been verified and no guarantee, warranty or representation, either express or implied, is made with respect to such information. Terms of sale or lease and availability are subject to change or withdrawal without notice.