



**CUSHMAN &
WAKEFIELD**
Commerce

FOR LEASE

Rail Central

1790 Bonanza Drive / Park City, Utah



Asking Rate: \$25/SF, NNN
CAM Fee: \$7.35 (includes utilities)

Property Highlights

- Suite 250: 1,536 SF
- Beautiful office space in the heart of prospectors
- Balcony and patio seating
- Located right in front of the Rail Trail
- See more at <http://homesite.obeo.com/997104>



Tim Anker

Branch Broker | Commercial Properties
+1 435 575 5630
tanker@comre.com

Brieona Pappas

Associate
+1 435 575 5631
bpappas@comre.com

1794 Olympic Parkway, Suite 130
Park City, Utah 84098
Main +1 435 575 5600
Fax +1 435 575 5640
comre.com

Independently Owned and Operated / A Member of the Cushman & Wakefield Alliance

Cushman & Wakefield Copyright 2016. No warranty or representation, express or implied, is made to the accuracy or completeness of the information contained herein, and same is submitted subject to errors, omissions, change of price, rental or other conditions, withdrawal without notice, and to any special listing conditions imposed by the property owner(s). As applicable, we make no representation as to the condition of the property (or properties) in question. (path: G:\1 - Projects\Park City Office\Anker_Tim\1 - Flyers\1790BonanzaDriveSuite102_201_250\1790BonanzaDriveSuite250_Flyer)



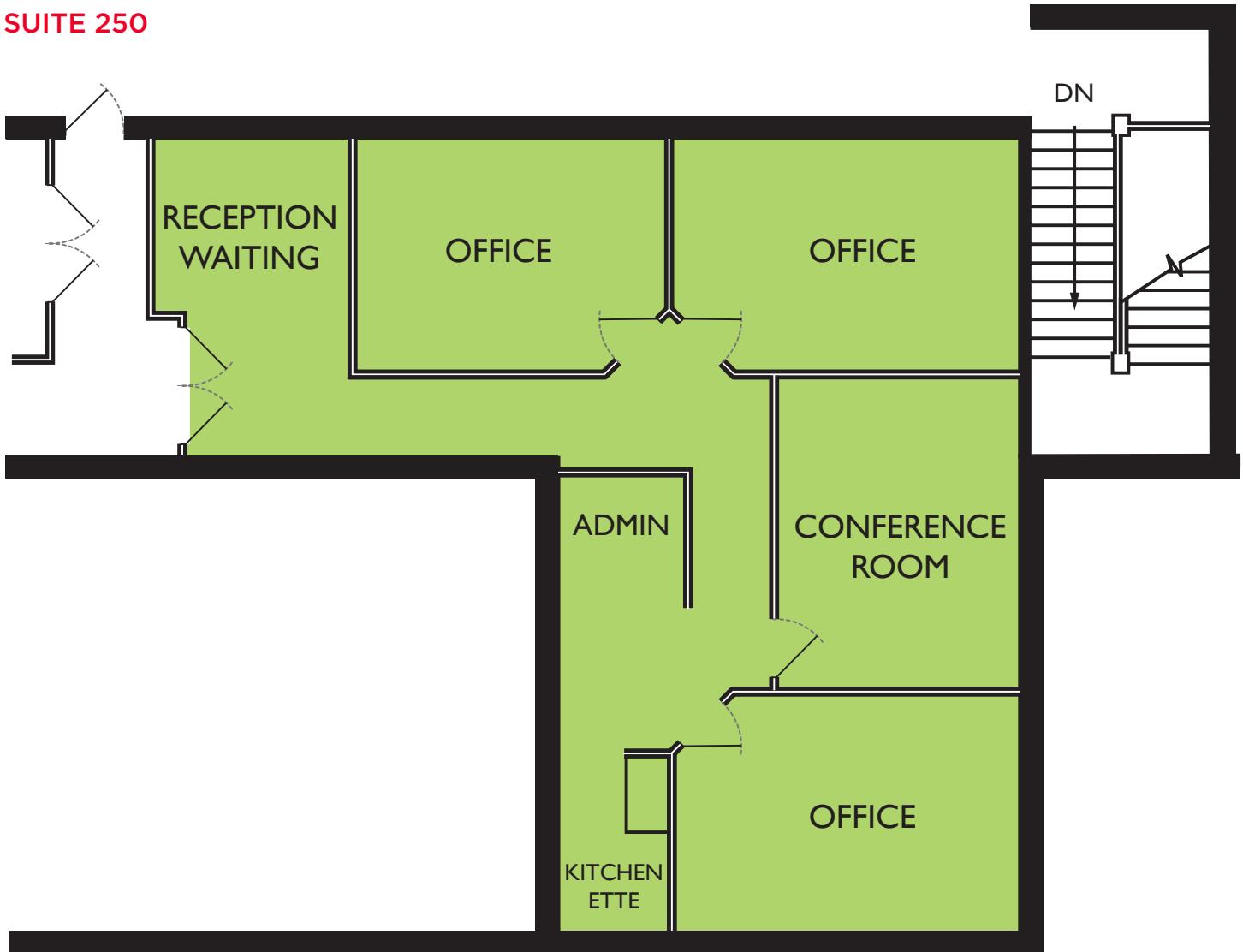
**CUSHMAN &
WAKEFIELD**
Commerce

FOR LEASE

Rail Central

1790 Bonanza Drive / Park City, Utah

SUITE 250



Tim Anker
Branch Broker | Commercial Properties
+1 435 575 5630
tanker@comre.com

Brieona Pappas
Associate
+1 435 575 5631
bpappas@comre.com

1794 Olympic Parkway, Suite 130
Park City, Utah 84098
Main +1 435 575 5600
Fax +1 435 575 5640
comre.com

Independently Owned and Operated / A Member of the Cushman & Wakefield Alliance

Cushman & Wakefield Copyright 2016. No warranty or representation, express or implied, is made to the accuracy or completeness of the information contained herein, and same is submitted subject to errors, omissions, change of price, rental or other conditions, withdrawal without notice, and to any special listing conditions imposed by the property owner(s). As applicable, we make no representation as to the condition of the property (or properties) in question. (path: G:\1 - Projects\Park City Office\Anker_Tim\1 - Flyers\1790BonanzaDriveSuite102_201_250\1790BonanzaDriveSuite250_Flyer)

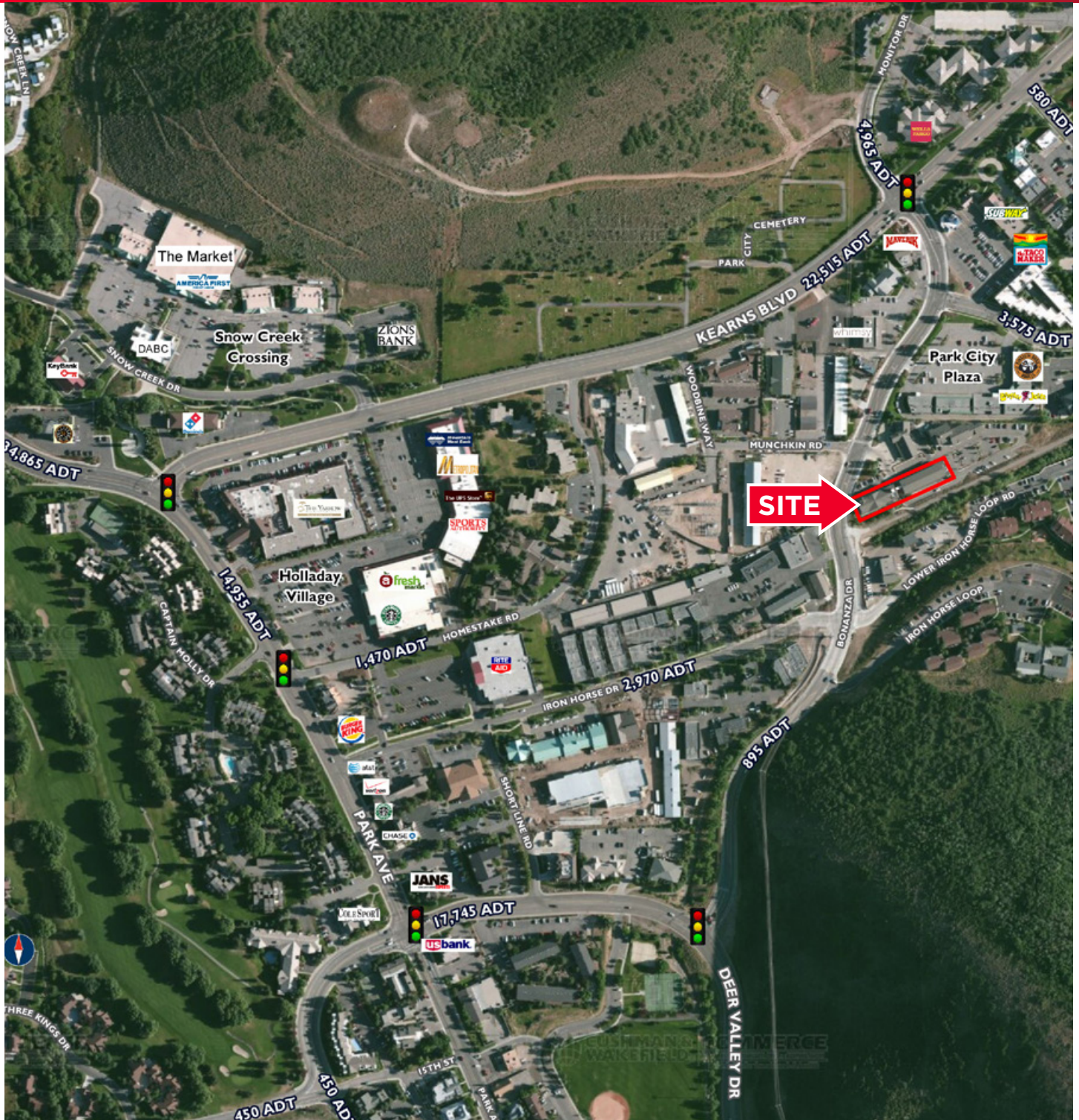


**CUSHMAN &
WAKEFIELD**
Commerce

FOR LEASE

Rail Central

1790 Bonanza Drive / Park City, Utah



Tim Anker
Branch Broker | Commercial Properties
+1 435 575 5630
tanker@comre.com

Brieona Pappas
Associate
+1 435 575 5631
bpappas@comre.com

1794 Olympic Parkway, Suite 130
Park City, Utah 84098
Main +1 435 575 5600
Fax +1 435 575 5640
comre.com

Independently Owned and Operated / A Member of the Cushman & Wakefield Alliance

Cushman & Wakefield Copyright 2016. No warranty or representation, express or implied, is made to the accuracy or completeness of the information contained herein, and same is submitted subject to errors, omissions, change of price, rental or other conditions, withdrawal without notice, and to any special listing conditions imposed by the property owner(s). As applicable, we make no representation as to the condition of the property (or properties) in question. (path: G:\1 - Projects\Park City Office\Anker_Tim\1 - Flyers\1790BonanzaDriveSuite102_201_250\1790BonanzaDriveSuite250_Flyer)