

LAND

FOR SALE

\$250,000



Paradise



650 27TH AVE SW, VERO BEACH, FL 32962

650 27TH AVE SW

Property Highlights

- Prime Commercial Site
- Adjacent to Dollar General & Cumberland Farms
- Excellent Visibility & Easy Access
- 476' of Frontage on 27th Avenue
- Over 17,000 AADT

Offering Summary

Sale Price:	\$250,000
Lot Size:	3.1 Acres
Zoning:	CL

Demographics

	1 Mile	3 Miles	5 Miles
Total Households	2,528	20,181	36,550
Total Population	5,161	38,732	67,658
Average HH Income	\$75,273	\$67,702	\$69,221

Kollin G. Kite

772.633.5640

FL #SL3340957

kollin@kitepropertiesllc.com

Keith D. Kite

772.231.9333

FL #BK3172900

keith@kitepropertiesllc.com



WWW.CBCWORLDWIDE.COM / WWW.KITEPROPERTIESLLC.COM

COLDWELL BANKER COMMERCIAL | THE KITE TEAM

1950 US HIGHWAY 1, VERO BEACH, FL 32960

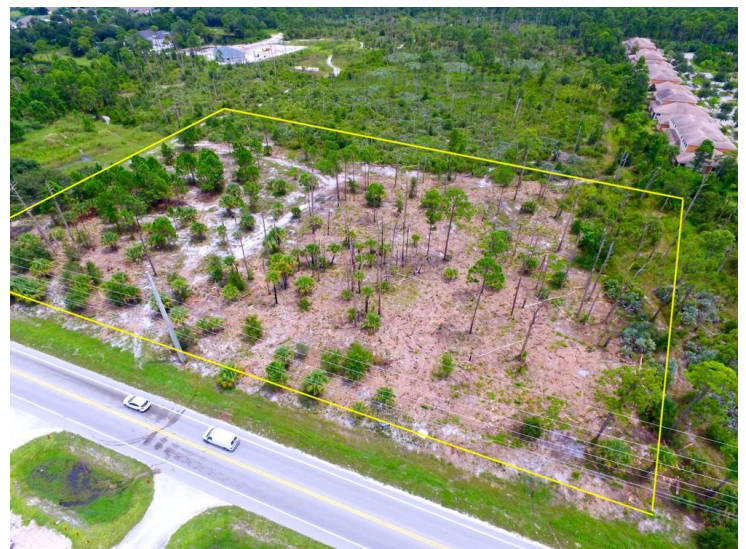
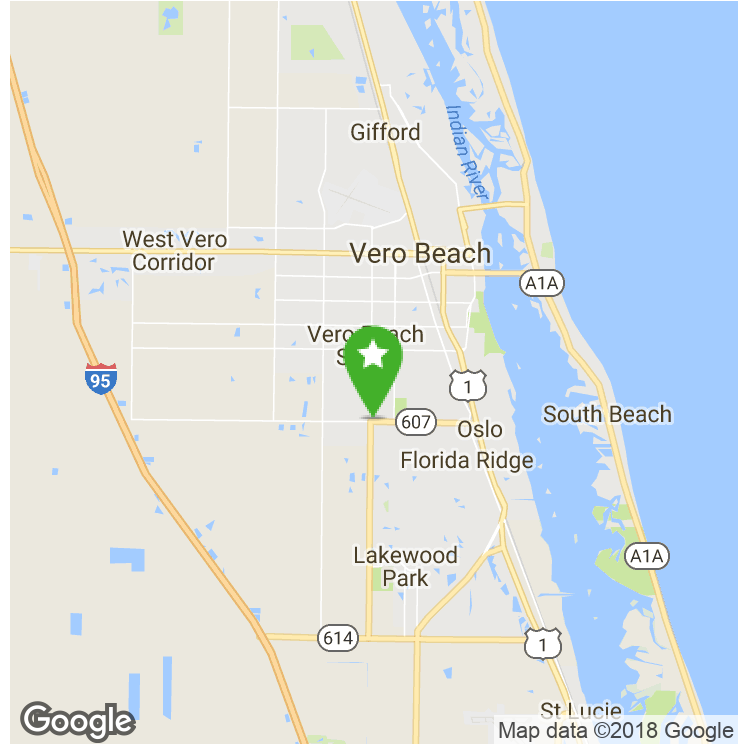
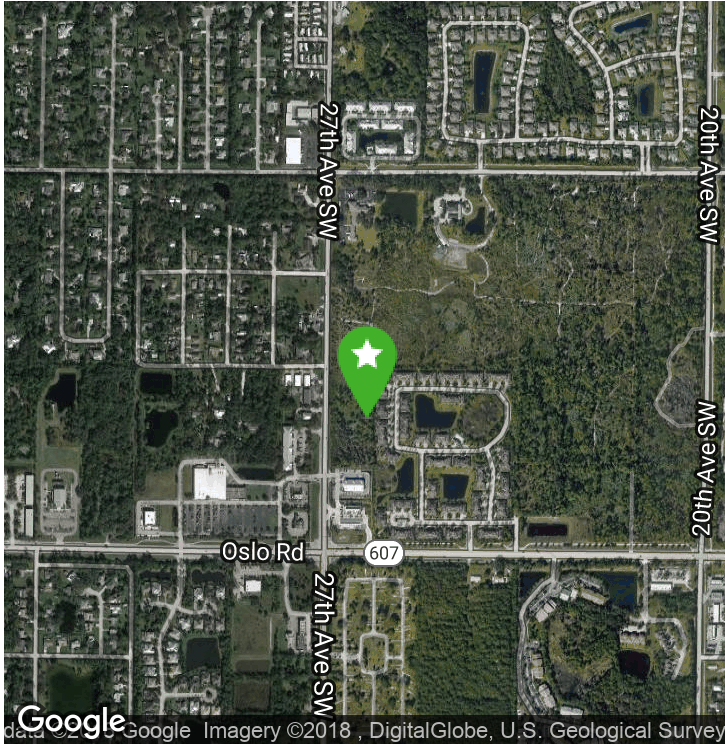
772-231-9333



650 27TH AVE SW

Paradise

650 27th Ave SW, Vero Beach, FL 32962



Kollin G. Kite

772.633.5640

FL #SL3340957

kollin@kitepropertiesllc.com

Keith D. Kite

772.231.9333

FL #BK3172900

keith@kitepropertiesllc.com