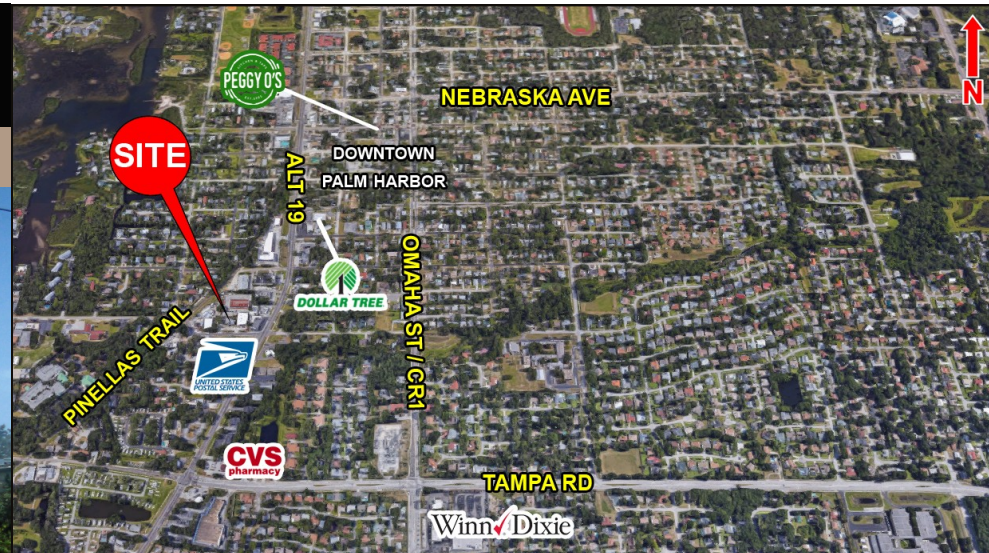


**FOR LEASE**

# THE BOARDWALK COMPANY



2018 Demographics:	1 Mile	3 Mile	5 Mile
Population	9,674	63,240	153,917
Households	4,076	28,197	71,345
Avg HH Income	\$97,419	\$85,407	\$79,307

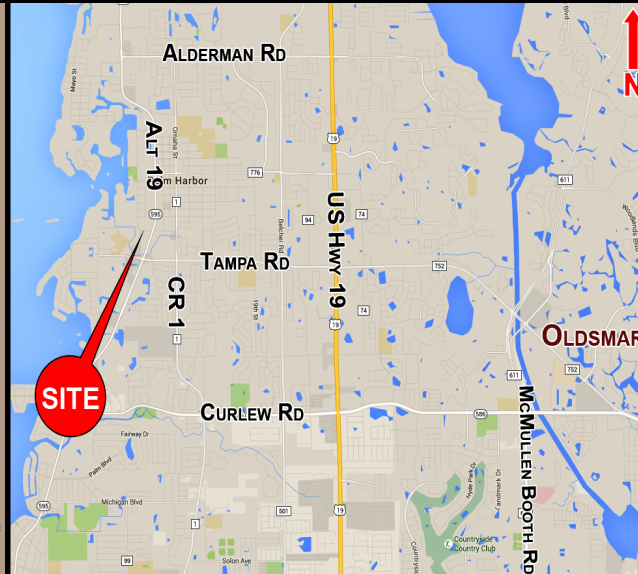
Source: U.S. Census Bureau, Esri

**Lease Rate: \$1,893/MONTH**  
**Plus Electrical and janitorial**

## OFFICE SPACE IN OLD PALM HARBOR

Property #7168

- Property address: 971 Virginia Avenue, Palm Harbor, FL 34683
- Suite A is a 1,628 SF (mol) office space, including reception area
- Ideal for professional office uses, e.g. legal, medical, financial, insurance, etc.
- Easy access via Nebraska Avenue or Tampa Road
- Conveniently located near downtown Old Palm Harbor, across from the Palm Harbor U.S. Post Office, and minutes from Florida Hospital North Pinellas
- Prominent signage on Virginia Avenue
- Additional Parking in rear of building
- More than 21,500 vehicles per day along Alt 19 per FDOT data



For more information, contact:

**Mike Aitchison**

Office: 727.784.1007

Fax: 727.784.1008

Cell: 916.919.4977

[jma@boardwalkcompany.com](mailto:jma@boardwalkcompany.com)

31640 US Hwy 19 N, Suite 1  
Palm Harbor, FL 34684

[www.BoardwalkCompany.com](http://www.BoardwalkCompany.com)  
LICENSED REAL ESTATE BROKER

The information contained herein was collected from sources deemed to be reliable. The Boardwalk Company, its Agents and Sellers make no warranties or representation of any manner as to the accuracy, and the same is subject to misstatements of fact, errors or omissions, prior sale, change of price, terms, withdrawal from market without notice or other modifications. Buyer, tenants and/or all other parties shall verify all information independently.