

REDEVELOPMENT OPPORTUNITY
COLONIAL WILLIAMSBURG: HENRY STREET CORNER
AVAILABLE



306 South Henry Street, Williamsburg, VA



Property Features

- 8,500 SF freestanding building with drive through potential & private parking
- 3 stories (2 plus basement)
- Zoned LB-1
- Modern upgrades to all mechanical systems
- 0.313 acres (with expansion potential)
- Adjacent to Colonial Williamsburg's Museum Welcome Center Campus
- Within two blocks of the National Center for State Courts, Duke of Gloucester St. the William & Mary Law School and College of William & Mary Campus
- Adjacent to public parking



For more information, contact:

DREW HAYNIE
First Vice President
757 873 9004
drew.haynie@thalhimer.com

DAWN GRIGGS, SIOR
First Vice President
757 873 1210
dawn.griggs@thalhimer.com

One BayPort Way, Suite 100
Newport News, VA 23606
www.thalhimer.com

**REDEVELOPMENT OPPORTUNITY
COLONIAL WILLIAMSBURG: HENRY STREET CORNER
AVAILABLE**



306 South Henry Street, Williamsburg, VA



First Floor Vault (Office Conversion)



First Floor Main



Basement Vault



View from Museum Lawn

For more information, contact:

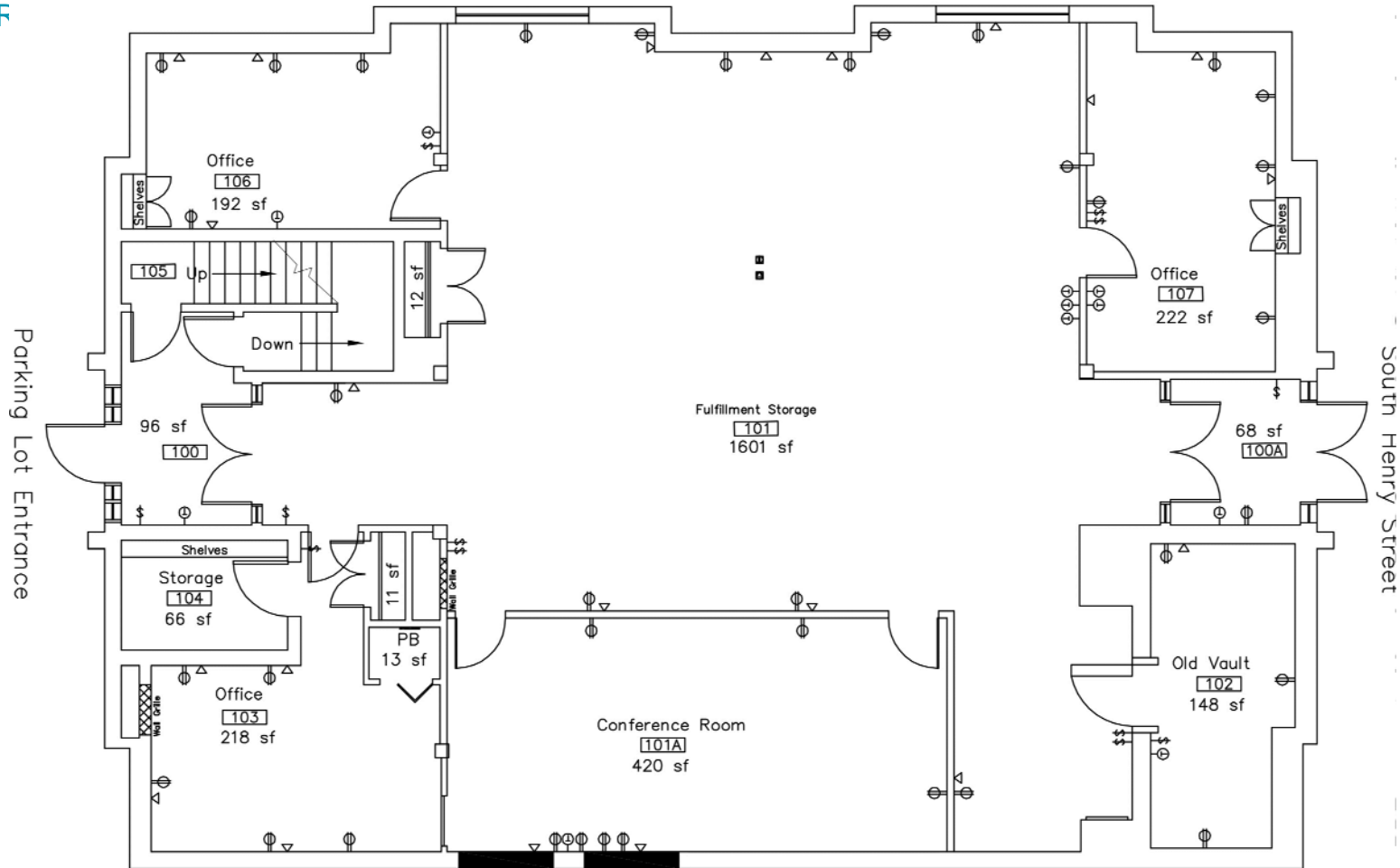
DREW HAYNIE
First Vice President
757 873 9004
drew.haynie@thalhimer.com

DAWN GRIGGS, SIOR
First Vice President
757 873 1210
dawn.griggs@thalhimer.com

One BayPort Way, Suite 100
Newport News, VA 23606
www.thalhimer.com

306 South Henry Street, Williamsburg, VA

FIRST FLOOR



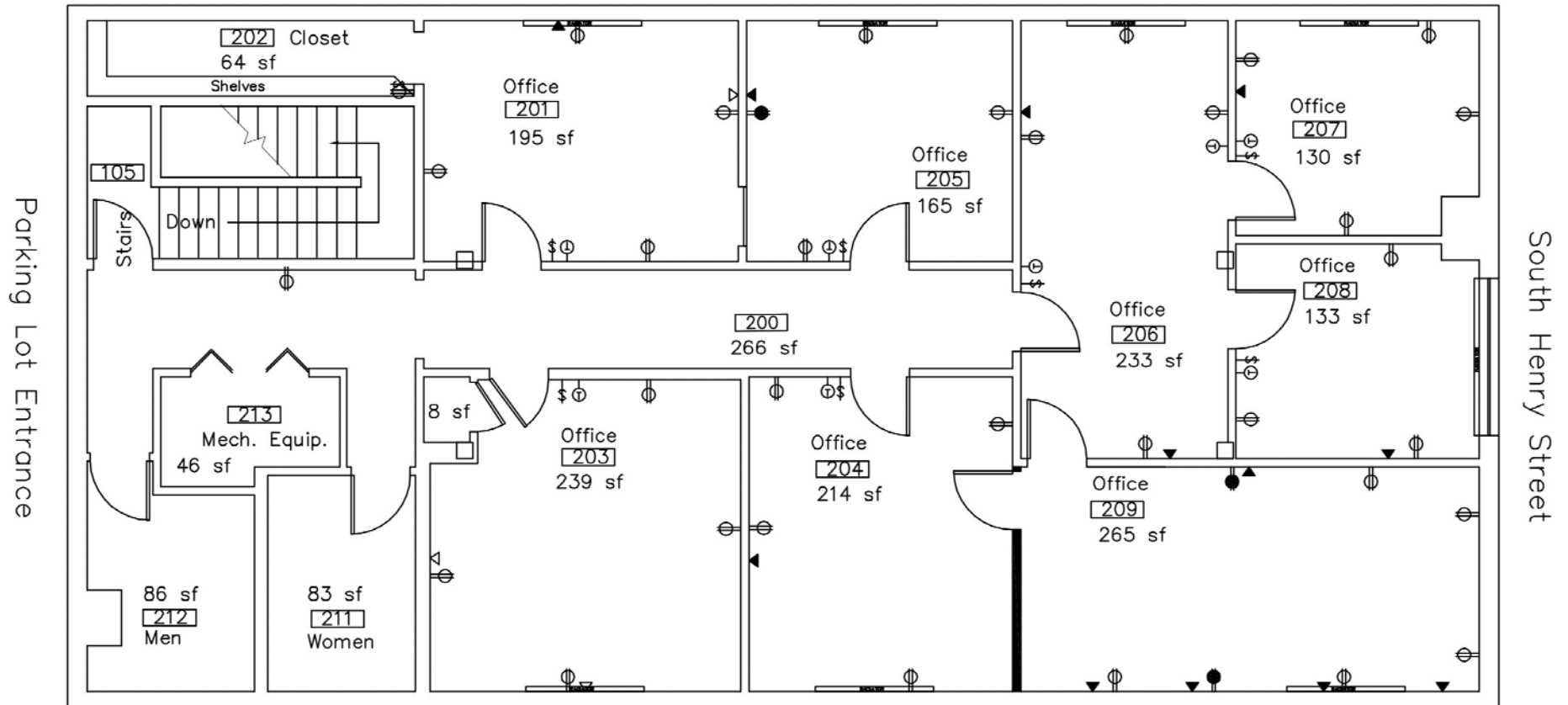
For more information, contact:

DREW HAYNIE
First Vice President
757 873 9004
drew.haynie@thalhimer.com

DAWN GRIGGS, SIOR
First Vice President
757 873 1210
dawn.griggs@thalhimer.com

One BayPort Way, Suite 100
Newport News, VA 23606
www.thalhimer.com

SECOND FLOOR



For more information, contact:

DREW HAYNIE
First Vice President
757 873 9004
drew.haynie@thalhimer.com

DAWN GRIGGS, SIOR
First Vice President
757 873 1210
dawn.griggs@thalhimer.com

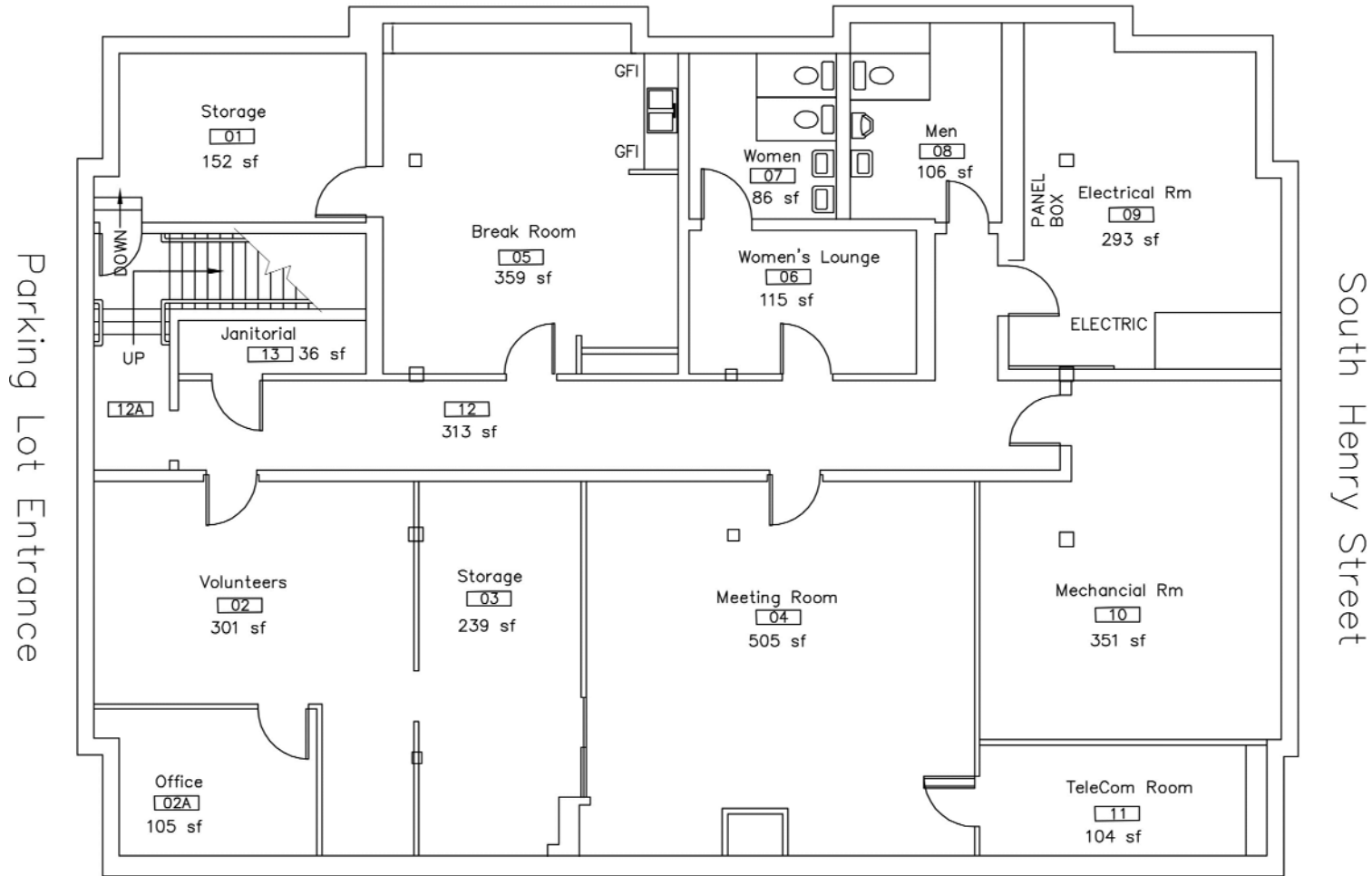
One BayPort Way, Suite 100
Newport News, VA 23606
www.thalhimer.com

**REDEVELOPMENT OPPORTUNITY
COLONIAL WILLIAMSBURG: HENRY STREET CORNER
AVAILABLE**



306 South Henry Street, Williamsburg, VA

BASEMENT



For more information, contact:

DREW HAYNIE
First Vice President
757 873 9004
drew.haynie@thalhimer.com

DAWN GRIGGS, SIOR
First Vice President
757 873 1210
dawn.griggs@thalhimer.com

One BayPort Way, Suite 100
Newport News, VA 23606
www.thalhimer.com

REDEVELOPMENT OPPORTUNITY COLONIAL WILLIAMSBURG: HENRY STREET CORNER AVAILABLE



306 South Henry Street, Williamsburg, VA



For more information, contact:

DREW HAYNIE
First Vice President
757 873 9004
drew.haynie@thalhimer.com

DAWN GRIGGS, SIOR
First Vice President
757 873 1210
dawn.griggs@thalhimer.com

One BayPort Way, Suite 100
Newport News, VA 23606
www.thalhimer.com