

8 3 8 0  
M E L R O S E A V E



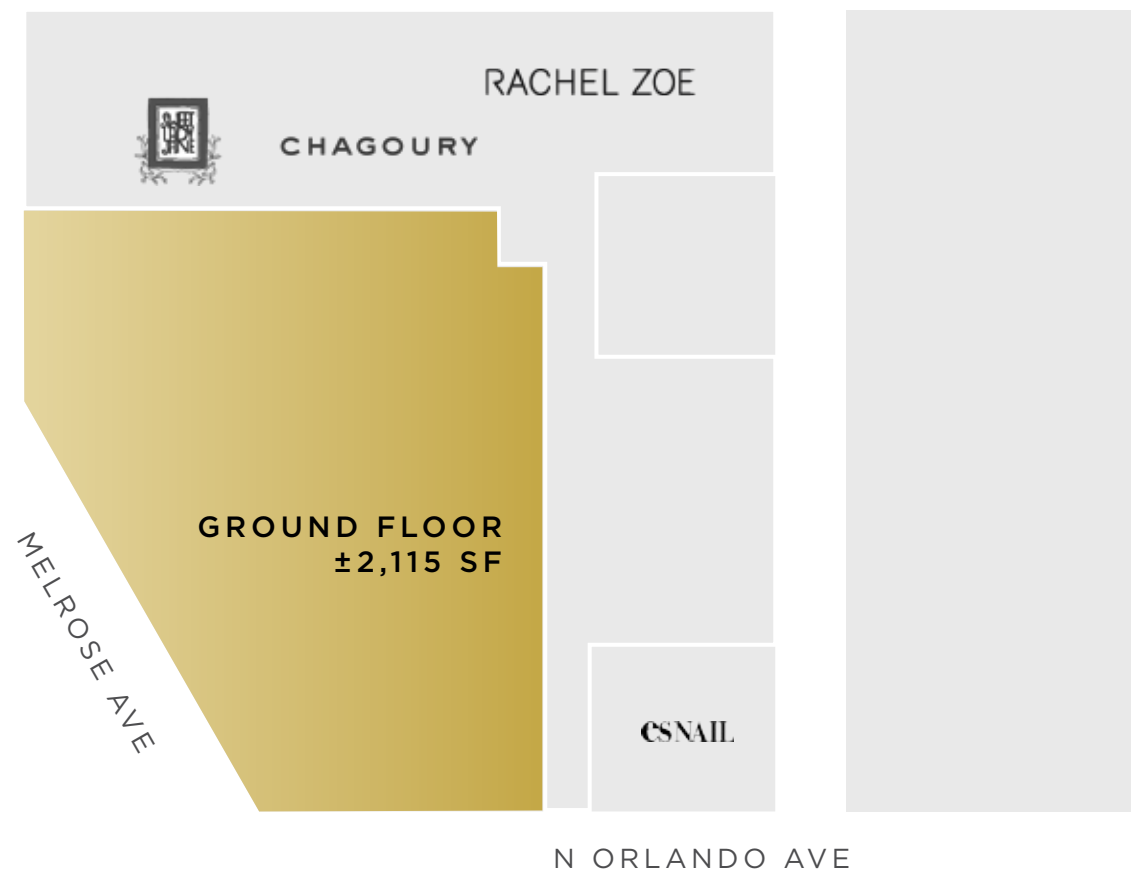
KAZUKO Y. MORGAN  
Vice Chairman  
Lic. 01070005  
415.773.3546  
[kazuko.morgan@cushwake.com](mailto:kazuko.morgan@cushwake.com)

CARINE MAMANN  
Senior Director  
Lic. 01734150  
310.595.2235  
[carine.mamann@cushwake.com](mailto:carine.mamann@cushwake.com)



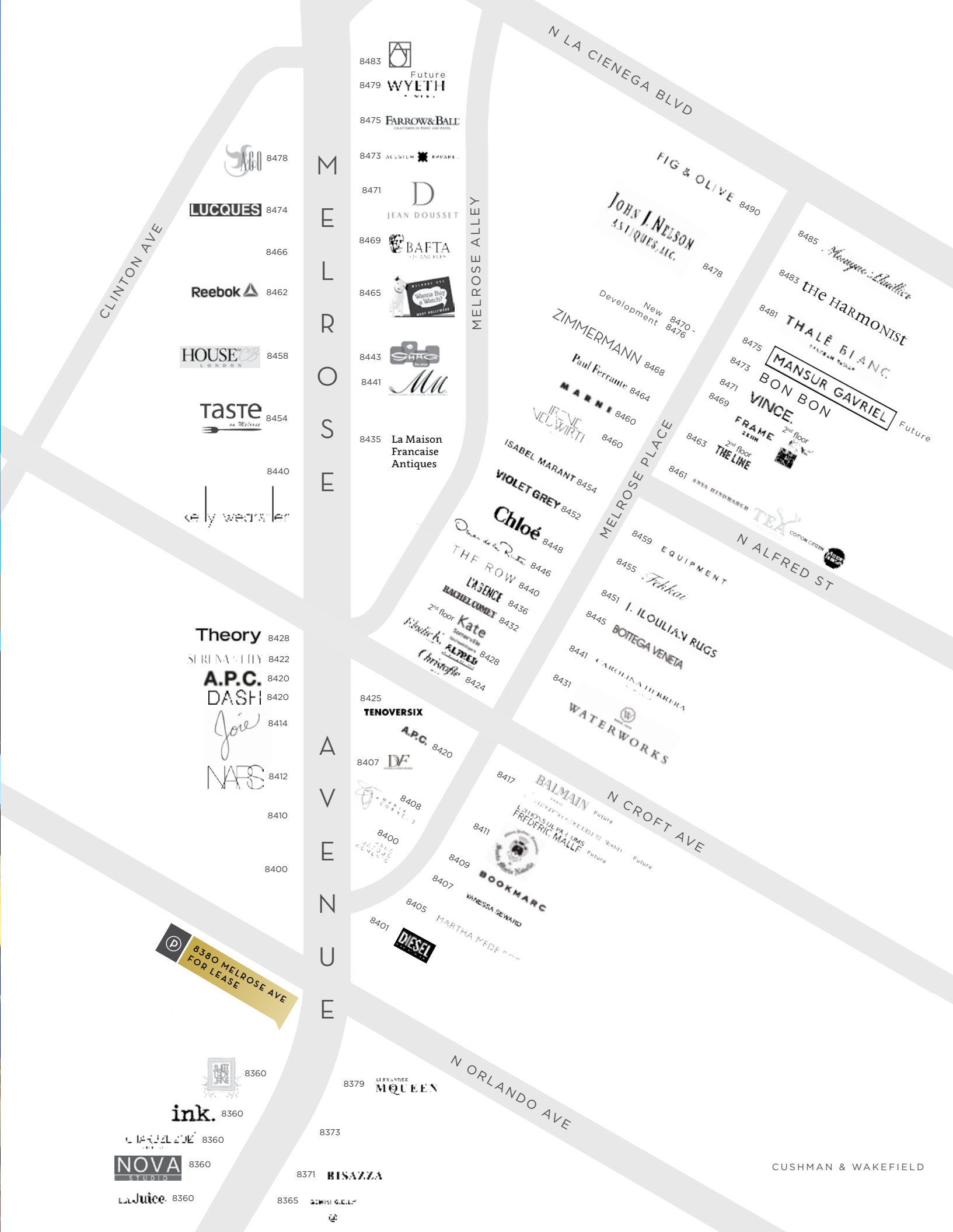
## 8 3 8 0 M E L R O S E A V E N U E

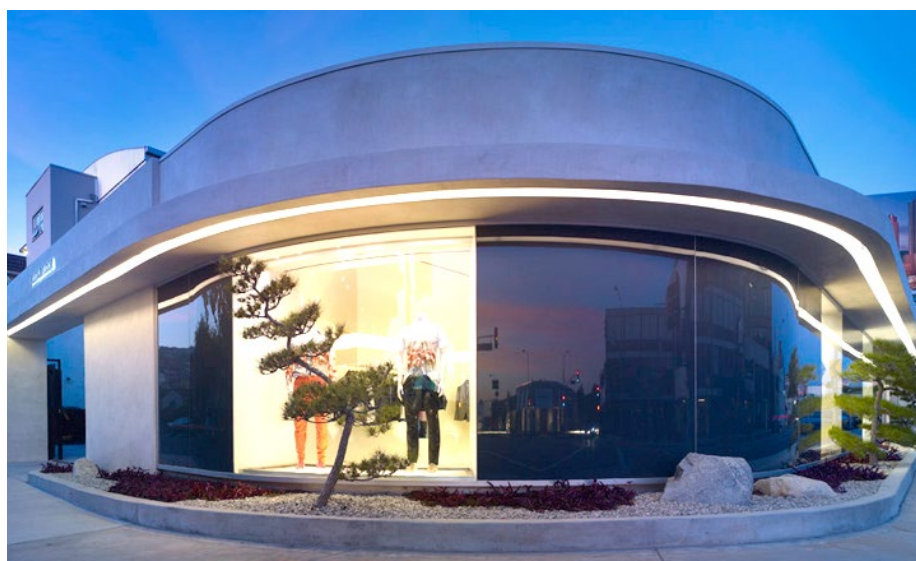
8380 Melrose Avenue is a one of a kind CORNER RETAIL FLAGSHIP OPPORTUNITY with 70 feet of wraparound frontage, floor to ceiling window lines and access to TWO PREMIER BILLBOARDS on Melrose Avenue.



## P R E M I S E S

8380 Melrose Avenue is 2,115 square feet and is located directly across the street from **Alexander McQueen** and **Marc Jacobs**. The building is home to **Rachel Zoe's** corporate headquarters. This corridor of Melrose Avenue is a continuation of Melrose Place, which is home to **Oscar de la Renta, Isabel Marant, Chloé, Marni** and **Bottega Veneta**. This is a highly visible location on Melrose with abundant foot and vehicular traffic.





8 3 8 0  
M E L R O S E A V E

For further inquiries, please contact:



KAZUKO Y. MORGAN  
Vice Chairman  
Lic. 01070005  
415.773.3546  
[kazuko.morgan@cushwake.com](mailto:kazuko.morgan@cushwake.com)

CARINE MAMANN  
Senior Director  
Lic. 01734150  
310.595.2235  
[carine.mamann@cushwake.com](mailto:carine.mamann@cushwake.com)