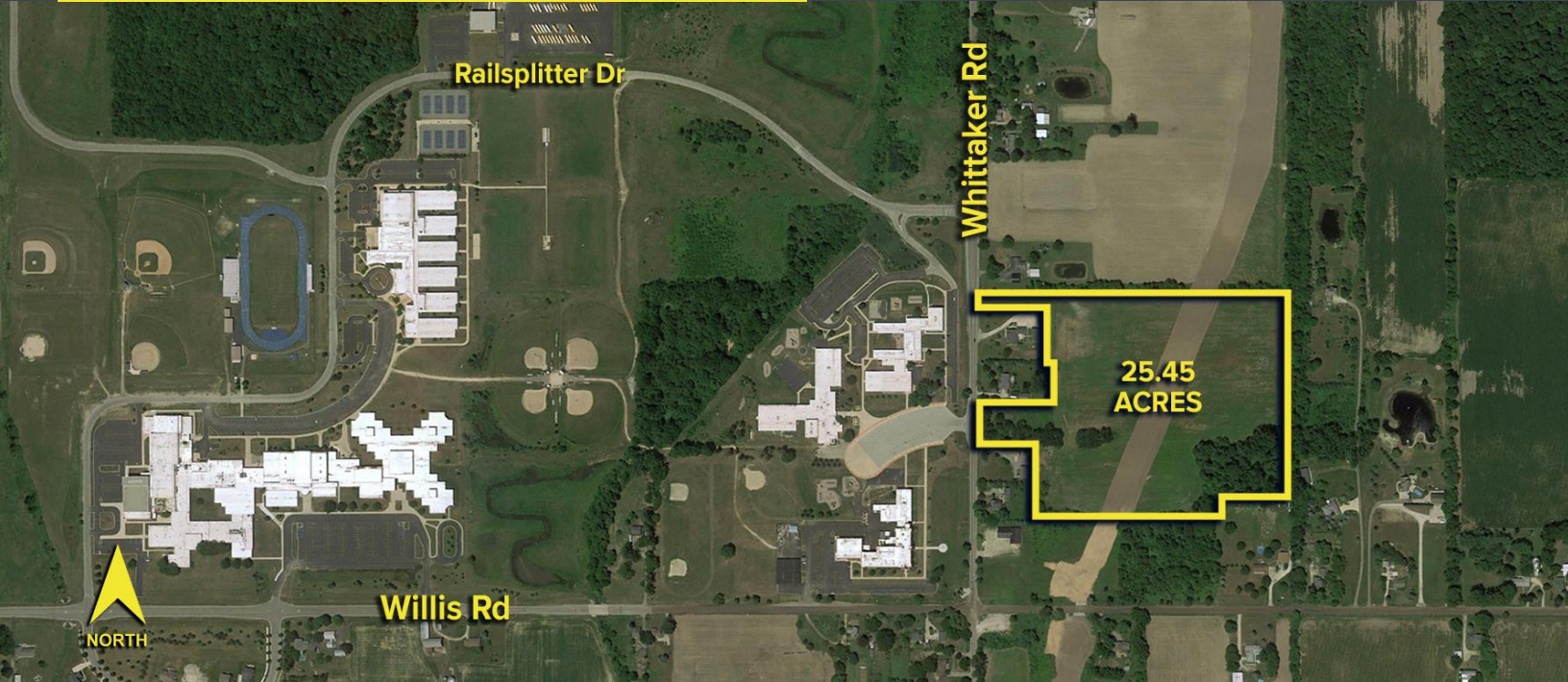


WHITTAKER ROAD AUGUSTA TWP., MICHIGAN

VACANT LAND FOR SALE
25.45 Acres Available



**SIGNATURE
ASSOCIATES**
KNOW SIGNATURE | KNOW RESULTS



PROPERTY FEATURES

- 25.45 acres available
- Zoned GC, General Commercial
- Proposed site plan includes shopping center, grocery store or outlet
- Allows for up to 625 parking spaces (ratio 5.04/1,000 sq. ft.)
- Asking Price: \$2,000,000 (\$78,585.46/acre)



For more information, please contact:

STEVE GORDON
(248) 948 0101
sgordon@signatureassociates.com

JAY CHAVEY
(248) 948 4196
jchavey@signatureassociates.com

SIGNATURE ASSOCIATES
One Towne Square, Suite 1200
Southfield, MI 48076
www.signatureassociates.com

