

10 N. MITCHELL COURT

Addison, Illinois

257,974 SF

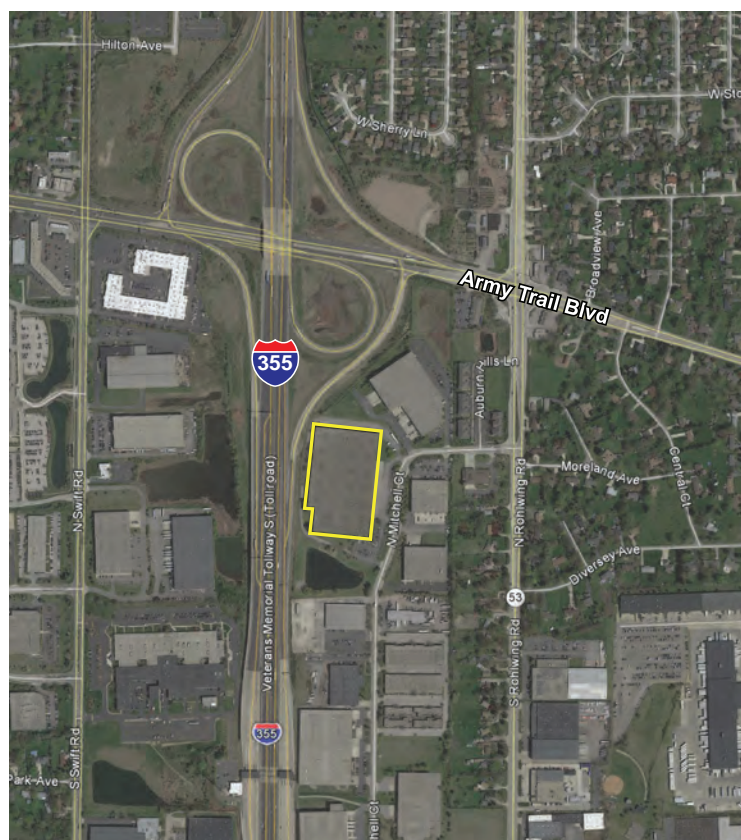
Available for Sublease

SUBLEASE OPPORTUNITY



BUILDING SPECIFICATIONS:

Available Space:	257,974 SF
Office:	10,319 SF
Site:	± 14.30 acres
Clear Height:	26'
Docks:	<ul style="list-style-type: none">› 26 interior docks› 1 drive in door
Typical Bay Size:	50' x 50'
Power:	1,200A / 480V / 3-phase
Parking:	Ample
Built:	1986
Property Taxes:	\$1.38 PSF (2015)
Lease Rate:	Subject to Offer
Comments:	<ul style="list-style-type: none">› Close proximity to full interchange at I-355 & Army Trail Road



9450 W. BRYN MAWR AVENUE, SUITE 550
ROSEMONT, ILLINOIS 60018
MAIN | (773) 355-3000
WWW.LEE-ASSOCIATES.COM

FOR MORE INFORMATION:

MICHAEL J. ANDROWICH, JR.
Senior Associate
(773) 355-3047 direct
miandrowich@lee-associates.com

MICHAEL J. PLUMB
Principal
(773) 355-3019 direct
mplumb@lee-associates.com

JEFFREY J. JANDA, SIOR
Principal
(773) 355-3015 direct
jjanda@lee-associates.com

No warranty or representation is made as to the accuracy of the foregoing information. Terms of sale or lease and availability are subject to change or withdrawal without notice.

10 N. MITCHELL COURT

Addison, Illinois

257,974 SF
Available for Sublease



COMMENTS

- + Sublease through April 30, 2017
- + Direct lease available through DCT Industrial
- + Above standard high density sprinkler system
- + Aggressive sublease rental rate
- + Exposure on I- 355



FOR MORE INFORMATION:

MICHAEL J. ANDROWICH, JR.
Senior Associate
(773) 355-3047 direct
mjandrowich@lee-associates.com

MICHAEL J. PLUMB
Principal
(773) 355-3019 direct
mplumb@lee-associates.com

JEFFREY J. JANDA, SIOR
Principal
(773) 355-3015 direct
jjanda@lee-associates.com