

**SPEC UNIT,
ALL NEW INTERIOR IMPROVEMENTS!!**



ASKING RATE: \$3,000 per month - net of PG&E

PROPERTY HIGHLIGHTS

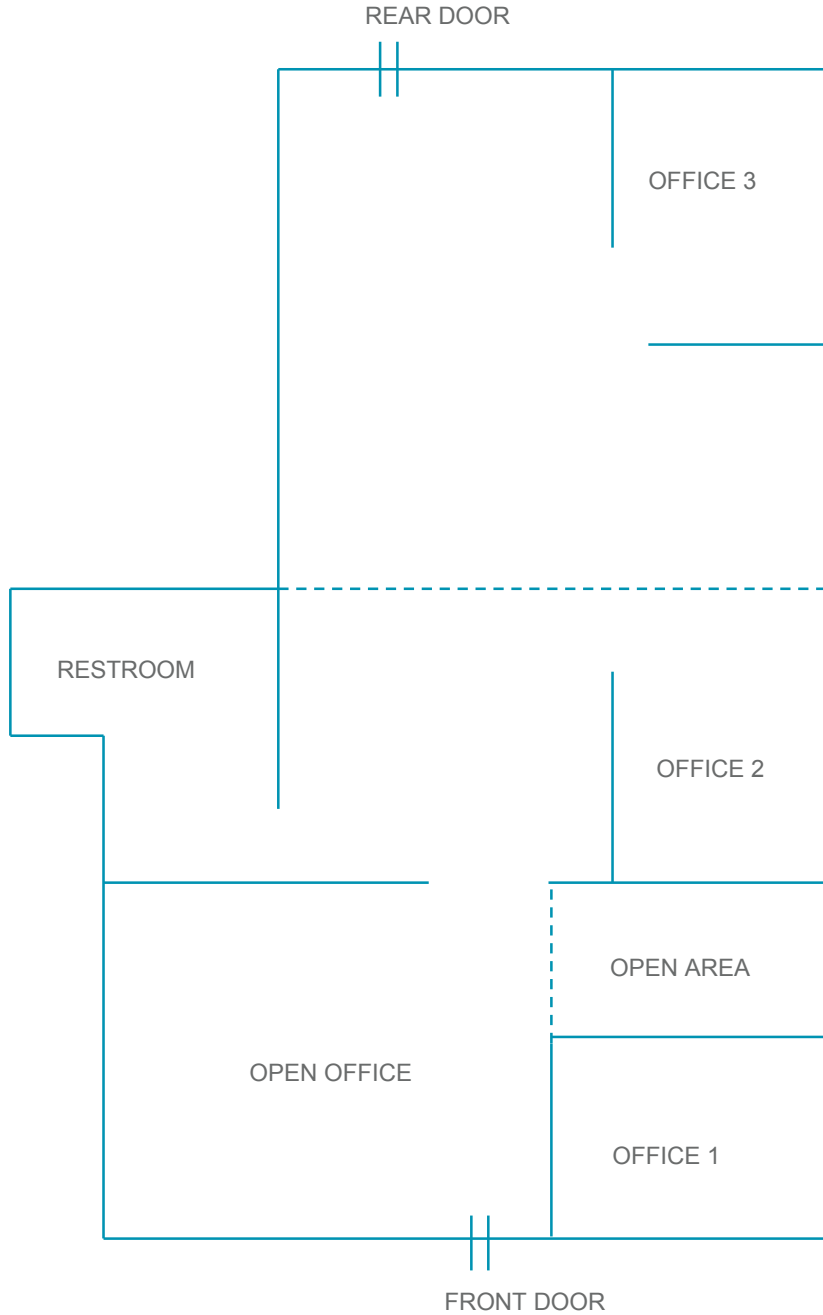
- 1,400 SF Available
- Available 3/1/2019
- Walking distance to retail amenities
- Easy access to I-680
- Owner on Site

Justin Grilli
Managing Director
1 925 621 3858 | Lic. 01410373
justin.grilli@cushwake.com

5000 Hopyard Road, Suite 205
Pleasanton, CA 94588
1 925 621 3840
www.cushwake.com

FLOOR PLAN | ±1,400 SF Office

*Not to Scale



Justin Grilli
Managing Director
1 925 621 3858 | Lic. 01410373
justin.grilli@cushwake.com

5000 Hopyard Road, Suite 205
Pleasanton, CA 94588
1 925 621 3840
www.cushwake.com

AMENITIES MAP



Justin Grilli
Managing Director
1 925 621 3858 | Lic. 01410373
justin.grilli@cushwake.com

5000 Hopyard Road, Suite 205
Pleasanton, CA 94588
1 925 621 3840
www.cushwake.com