



310
WEST
SUPERIOR

RIVER NORTH
CHICAGO, IL

RETAIL/OFFICE/MEDICAL
SPACE AVAILABLE

310 W. SUPERIOR

River North | Chicago, IL



SPACE AVAILABLE

Lower Level	6,310 SF
Second Level	6,200 SF

SITE SUMMARY

- Located in River North steps from the Brown/Purple “L” stop with over 1.98M rides per year
- Join CorePower Yoga and Salon Buzz
- Valet parking available during business hours with additional parking available nearby
- Large windows fronting Superior Street provide an abundance of natural light and signage opportunities
- Second floor is a fully built-out medical space but could easily be converted to showroom/office or fitness use

NEIGHBORS

CorePower Yoga, Salon Buzz, Luminaire, Club Lago, Starbucks, Walgreens, and Lightology.

POPULATION DENSITY

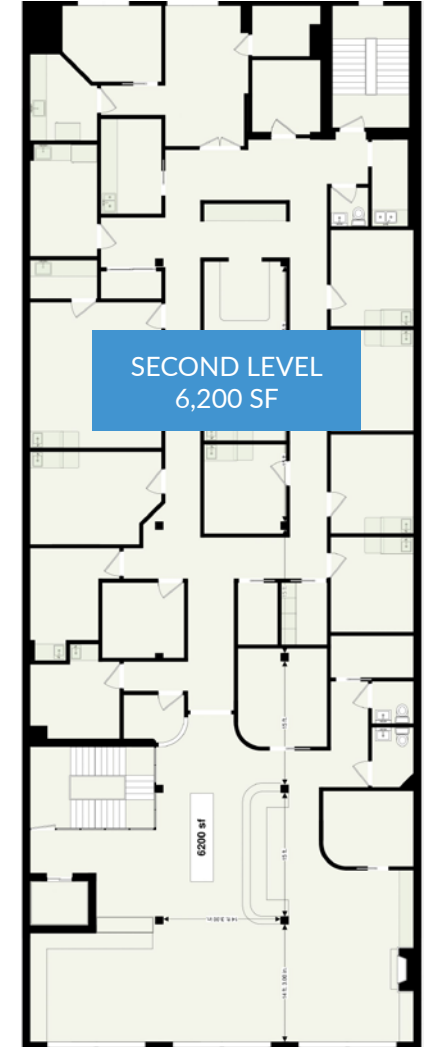
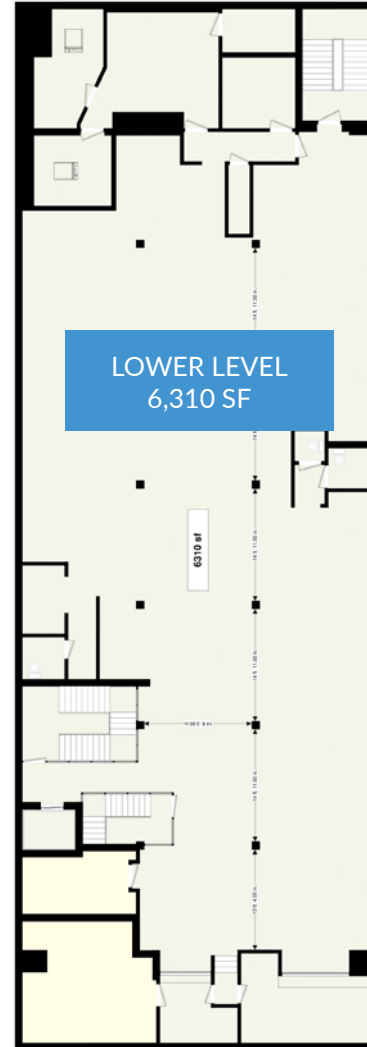
24,921	½ Mile
88,800	1 Mile
207,559	2 Mile

DAYTIME EMPLOYMENT

33,482	½ Mile
241,226	1 Mile
437,099	2 Mile

AVERAGE HH INCOME

\$128,124	½ Mile
\$127,189	1 Mile
\$128,057	2 Mile



W. SUPERIOR ST ↑
N

310 W. SUPERIOR

River North | Chicago, IL



CONTACT

Anthony Campagni
 ac@arcgrp.com
 (630) 908-5695

Elan Rasansky
 elan@arcgrp.com
 (630) 908-5696

© 2018 A-R-C Real Estate. All information is from sources believed reliable, not independently verified, and thus subject to errors, omissions, and modifications such as price, listing, square footage, rates and commissions. All information, estimates and projections subject to change, market assumptions, unknown facts and conditions, and future potentialities. A-R-C Real Estate makes no express or implied representations or warranties, as facts and results may vary materially from all information, estimates and projections. All renderings presented are conceptual.

A-R-C
 REAL ESTATE