



## Mosswood Drive

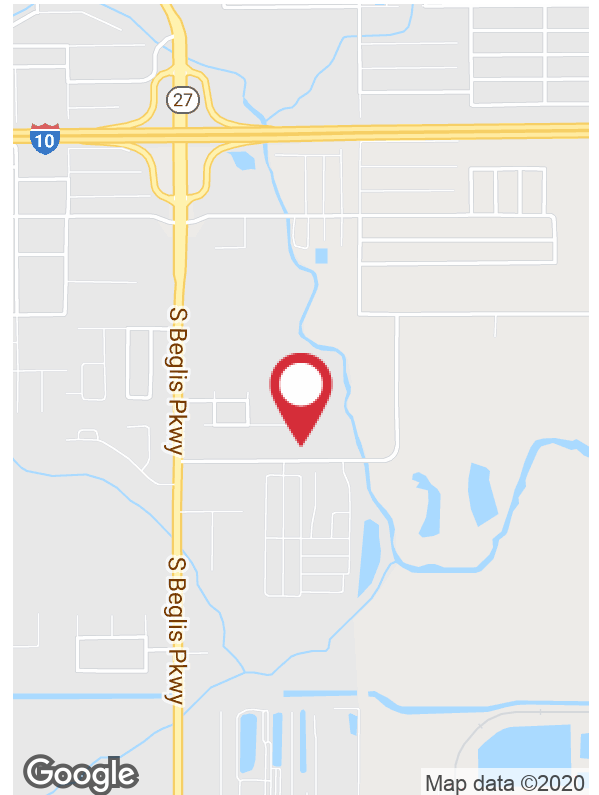
Sulphur, Louisiana 70665

### Property Highlights

- Four ±0.7 acre lots available on Mosswood Drive, just off of South Beglis Parkway
- Acreage is less than 2 miles from Interstate 10 and in a growing area for Industrial Businesses
- I1 "Light Industrial" Zoning
- Lots are cleared
- Owner will build to suit
- Additional acreage available from same owner -- contact agent for information

### Sale Price

\$110,000 per lot



**CALL OR EMAIL FOR MORE INFORMATION**

For more information

**Matt Redd, CCIM, SIOR, CRE**

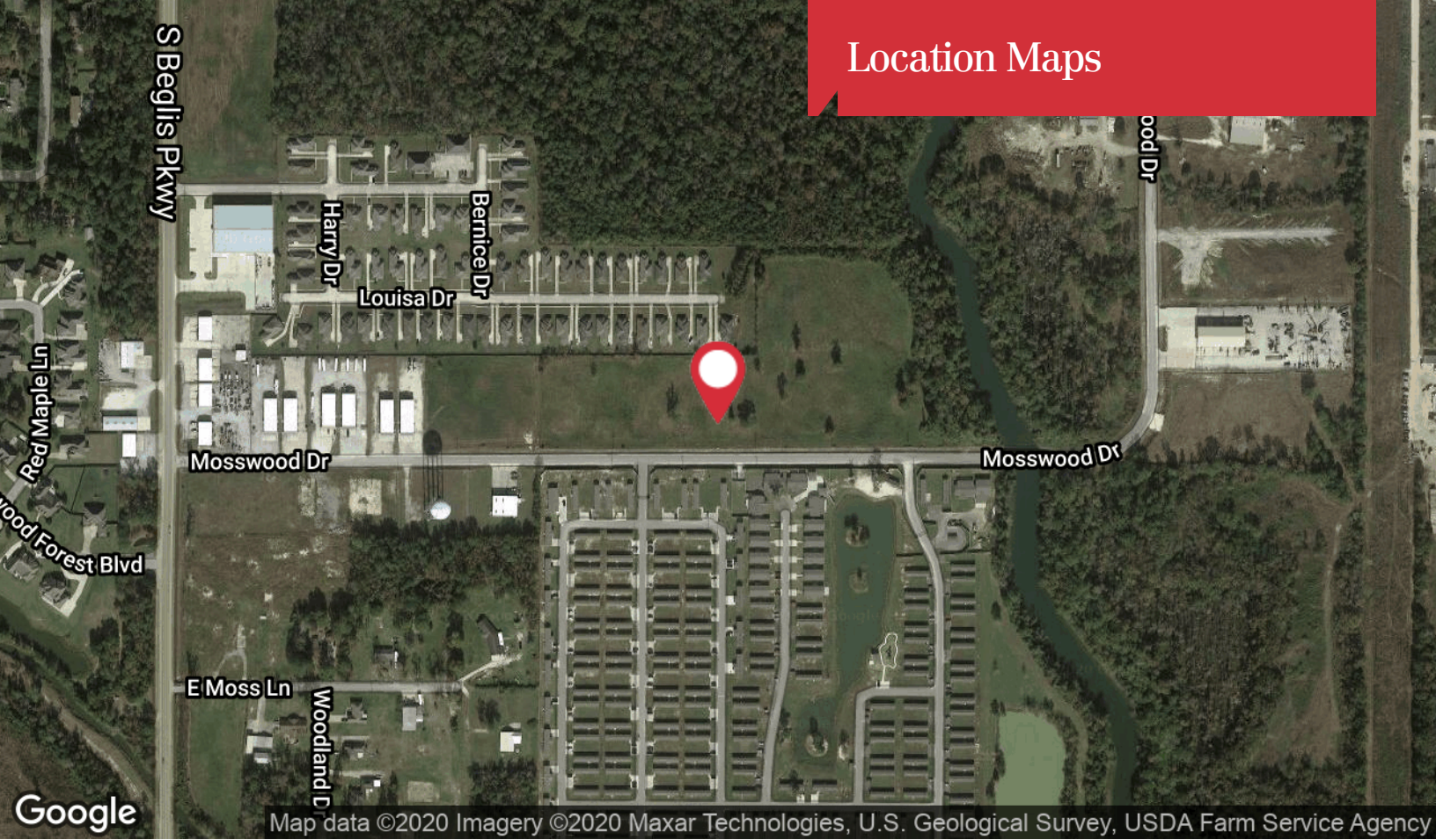
O: 337 310 7333 x206 | C: 337 489 9666  
mattredd@reddproperties.com

NO WARRANTY OR REPRESENTATION, EXPRESS OR IMPLIED, IS MADE AS TO THE ACCURACY OF THE INFORMATION CONTAINED HEREIN, AND THE SAME IS SUBMITTED SUBJECT TO ERRORS, OMISSIONS, CHANGE OF PRICE, RENTAL OR OTHER CONDITIONS, PRIOR SALE, LEASE OR FINANCING, OR WITHDRAWAL WITHOUT NOTICE, AND OF ANY SPECIAL LISTING CONDITIONS IMPOSED BY OUR PRINCIPALS NO WARRANTIES OR REPRESENTATIONS ARE MADE AS TO THE CONDITION OF THE PROPERTY OR ANY HAZARDS CONTAINED THEREIN ARE ANY TO BE IMPLIED. LICENSED IN LOUISIANA.

1424 Ryan Street  
Lake Charles, LA 70601  
337 310 7333 tel  
**latterblum.com**



# Location Maps



1424 Ryan Street  
Lake Charles, LA 70601  
337 310 7333 tel  
[latterblum.com](http://latterblum.com)