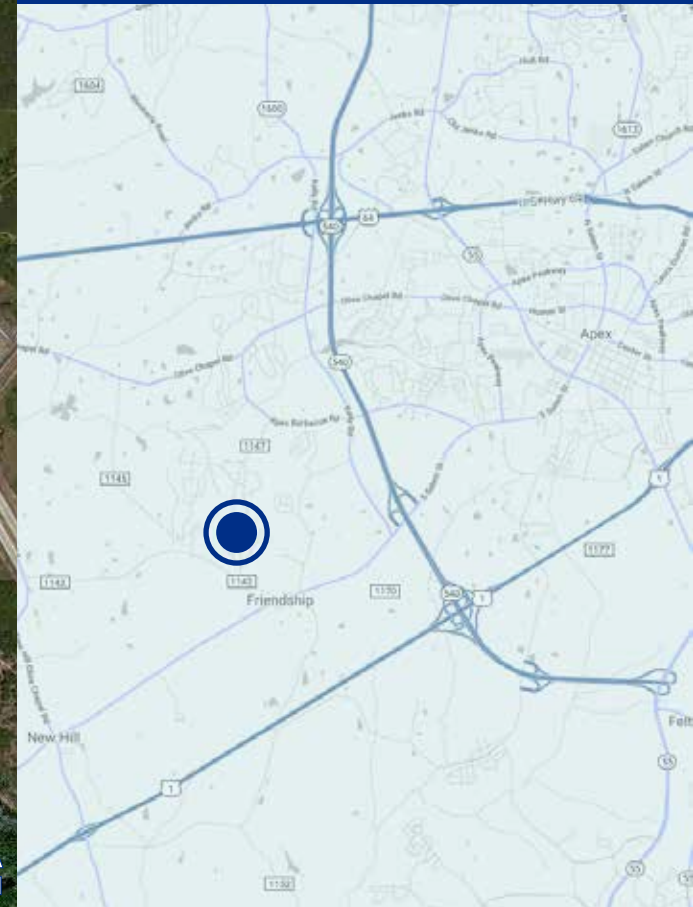


2.15 ACRES FOR SALE

RESIDENTIAL LAND IN
HIGH GROWTH AREA

2900 EVANS ROAD

APEX, NC 27502



MIKE KEEN

mkeen@trademarkproperties.com
919.795.1944 direct

CLAIBORNE LORD

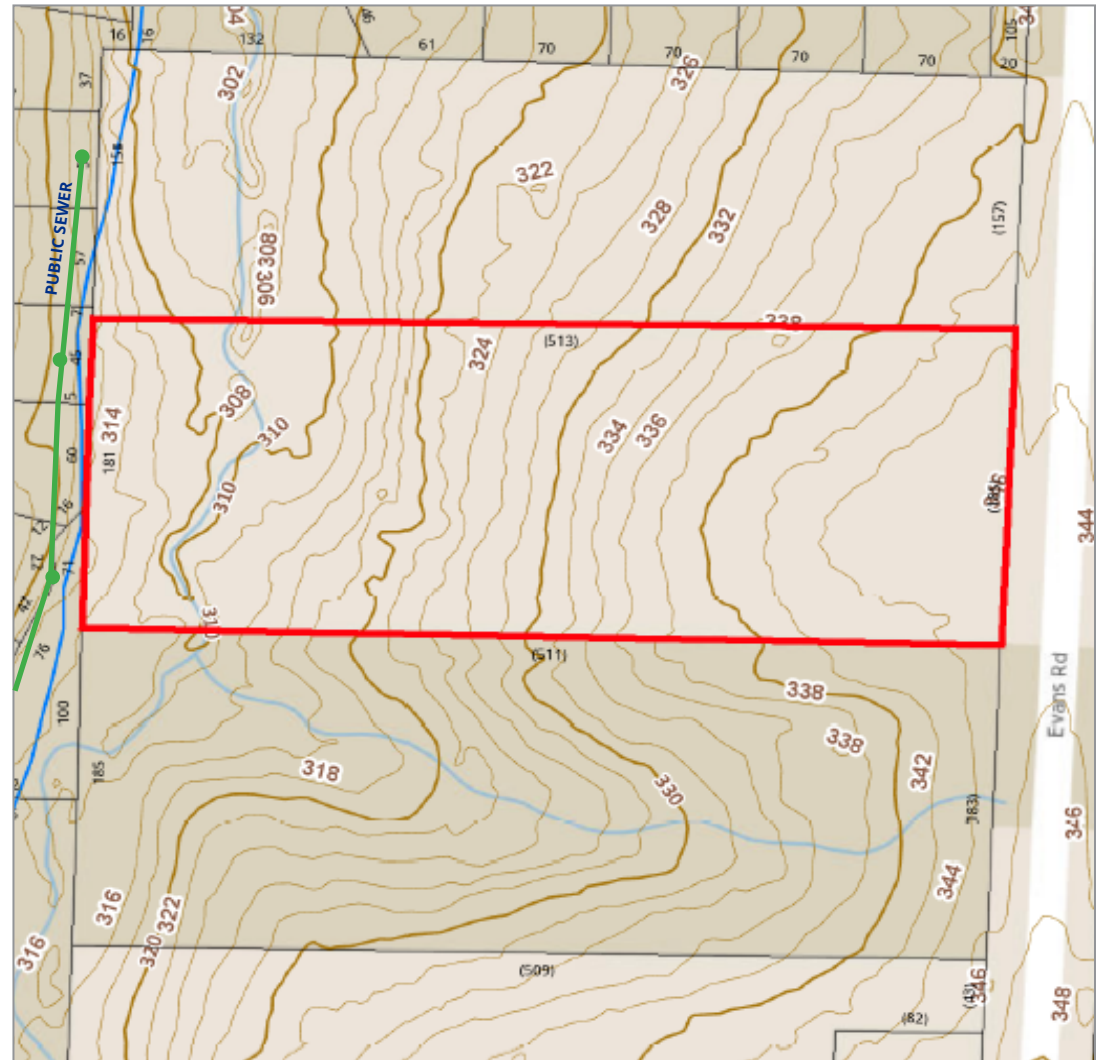
clord@trademarkproperties.com
919.645.1426 direct

1001 Wade Avenue, Suite 300
Raleigh, NC 27605
trademarkproperties.com
919.782.5552

ABOUT THE PROPERTY

- 2.15 acres for sale
- PIN 0721726204
- Zoned Rural Residential
- Surrounding properties have been rezoned to Medium Density Residential District (MD)
- MD Medium Density Residential District is to provide lands for medium density single-family and duplex residential uses at densities up to six units an acre
- Located in western Apex
- Minutes from I-540 (toll road)
- Located north of Humie Olive Road intersection
- Within close proximity to Apex Friendship Elementary, Middle, and High Schools
- Near Apex Nature Park, which includes an amphitheater, disc golf course, multi-use trails, a dog park, multi-age playground, picnic shelter with restrooms, and lighted tennis courts and soccer/multi-use fields
- Property slopes from east to west
- Public water accessible along Evans Road
- 2832 Evans Road septic field is located on the property

TOPOGRAPHY MAP



SALES PRICE: \$434,000

MIKE KEEN

mkeen@trademarkproperties.com
919.795.1944 direct

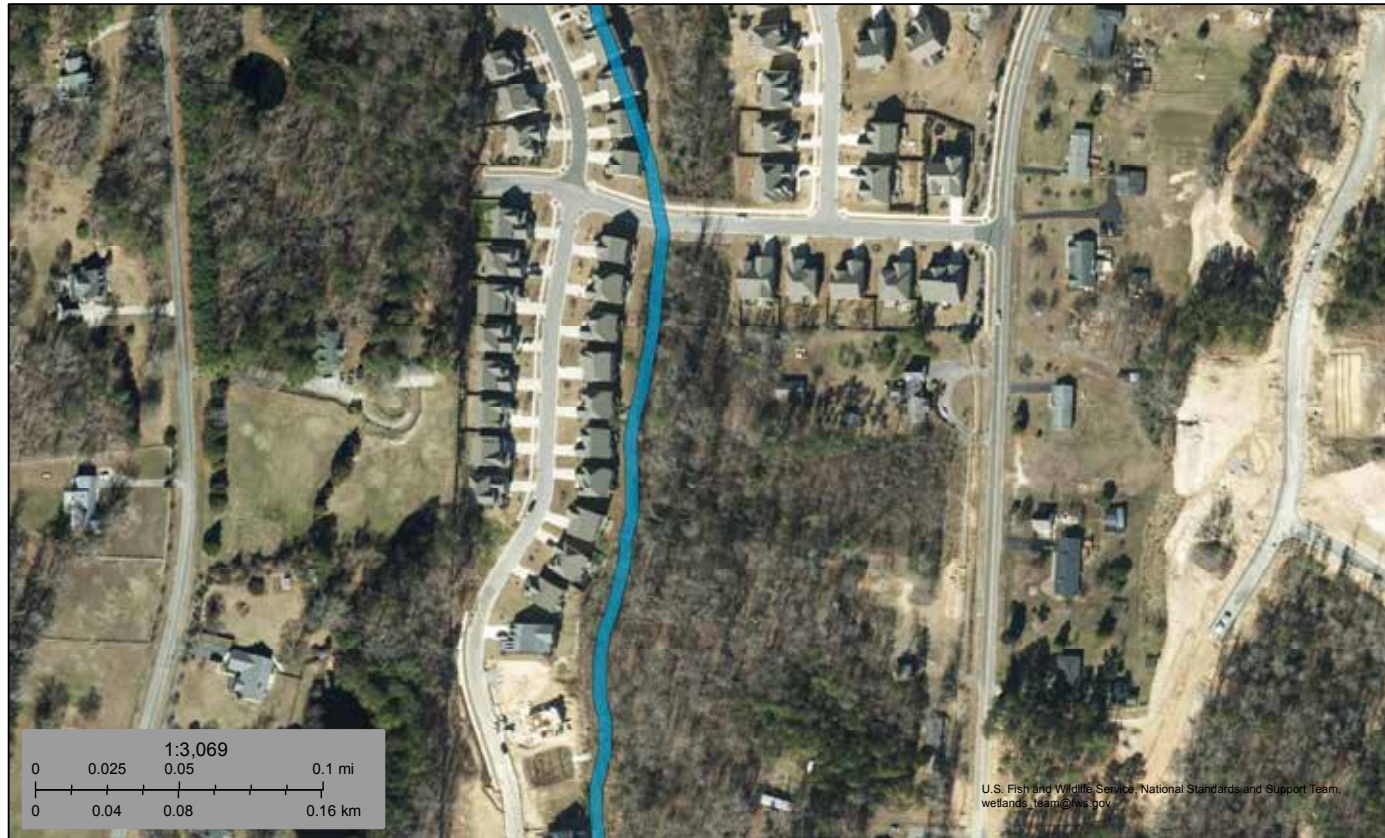
CLAIBORNE LORD

clord@trademarkproperties.com
919.645.1426 direct

1001 Wade Avenue, Suite 300, Raleigh, NC 27605 • trademarkproperties.com • 919.782.5552

The information contained herein was obtained from sources believed reliable; however, TradeMark Properties makes no guarantees, warranties, or representations as to the completeness or accuracy thereof. The presentation of this property is submitted subject to errors, omissions, changes of price or conditions prior to sale or lease, or withdrawal without notice.

NATIONAL WETLAND INVENTORY MAP



November 13, 2019

Wetlands

- | | | | | | |
|---|--------------------------------|---|-----------------------------------|---|----------|
|  | Estuarine and Marine Deepwater |  | Freshwater Emergent Wetland |  | Lake |
|  | Estuarine and Marine Wetland |  | Freshwater Forested/Shrub Wetland |  | Other |
| | |  | Freshwater Pond |  | Riverine |

U.S. Fish and Wildlife Service, National Standards and Support Team, wetlands_team@fws.gov

This map is for general reference only. The US Fish and Wildlife Service is not responsible for the accuracy or currentness of the base data shown on this map. All wetlands related data should be used in accordance with the layer metadata found on the Wetlands Mapper web site.

National Wetlands Inventory (NWI)
This page was produced by the NWI mapper

MIKE KEEN

mkeen@trademarkproperties.com
919.795.1944 direct

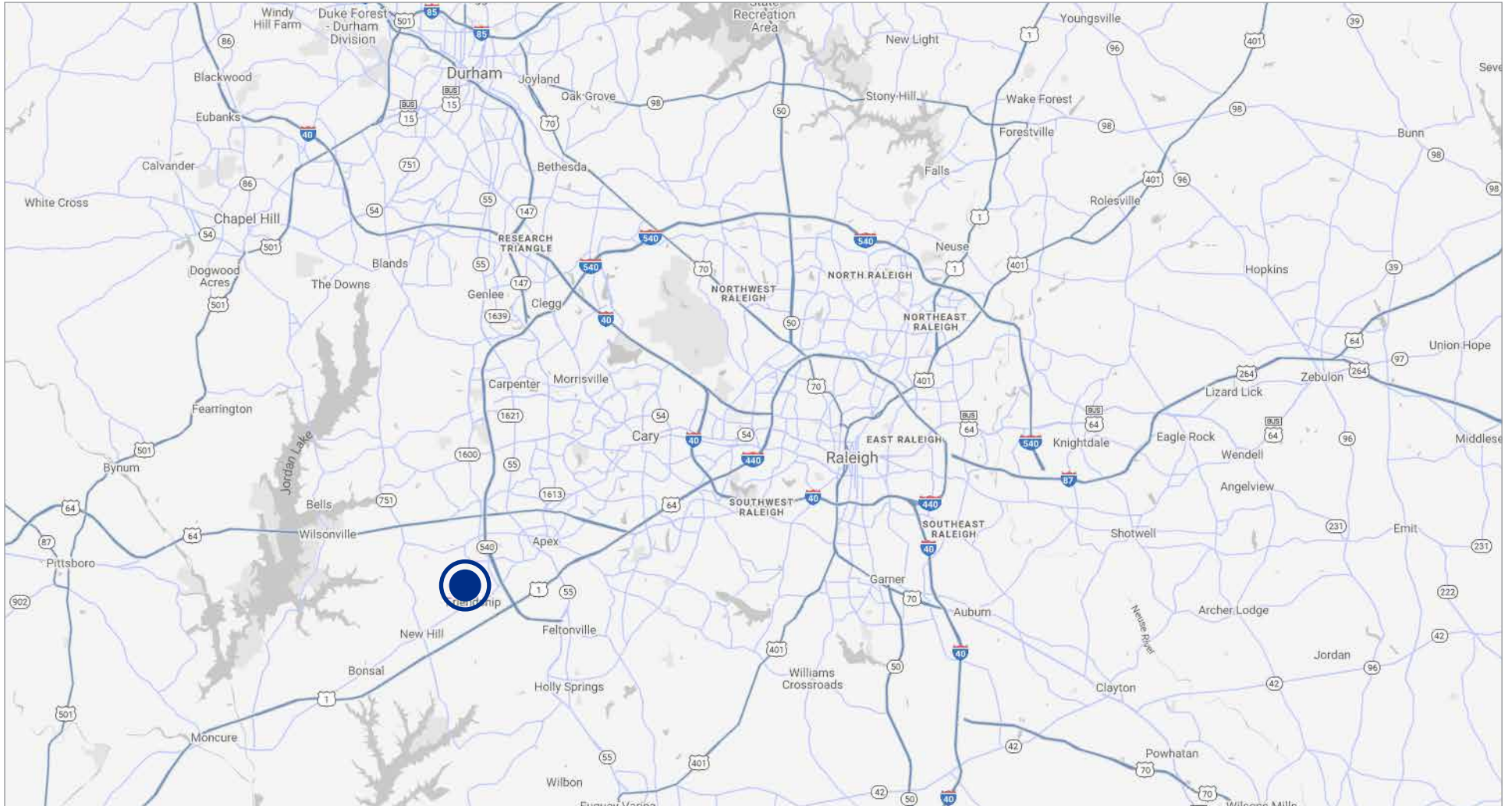
CLAIBORNE LORD

clord@trademarkproperties.com
919.645.1426 direct

1001 Wade Avenue, Suite 300, Raleigh, NC 27605 • trademarkproperties.com • 919.782.5552

The information contained herein was obtained from sources believed reliable; however, TradeMark Properties makes no guarantees, warranties, or representations as to the completeness or accuracy thereof. The presentation of this property is submitted subject to errors, omissions, changes of price or conditions prior to sale or lease, or withdrawal without notice.

LOCATION MAP



MIKE KEEN
mkeen@trademarkproperties.com
919.795.1944 direct

CLAIBORNE LORD
clord@trademarkproperties.com
919.645.1426 direct

1001 Wade Avenue, Suite 300, Raleigh, NC 27605 • trademarkproperties.com • 919.782.5552

The information contained herein was obtained from sources believed reliable; however, TradeMark Properties makes no guarantees, warranties, or representations as to the completeness or accuracy thereof. The presentation of this property is submitted subject to errors, omissions, changes of price or conditions prior to sale or lease, or withdrawal without notice.