

FOR LEASE RETAIL/RESTAURANT PROPERTY

1380 N. California Blvd., Walnut Creek, CA 94596



FEATURES

- 4,000-8,600 RSF of Ground Floor Retail
- 97 Units Above
- Delivery is scheduled for Q2 2021.
- Lease Rate: Call for Custom Pricing

HIGHLIGHTS

Located across the street from Scott's Seafood restaurant on North California Blvd in Walnut Creek, only 3 blocks from Neiman Marcus, Nordstrom anchored Broadway Plaza. The project will consist of a mix of apartments, flexible-use studios on 5 floors and approximately 8,600 RSF of high-end retail/restaurant space on the ground floor.

For more information visit: www.tricommercial.com

John Sechser | CalDRE #00829597
Dir: 925.296.3368 | Cell: 925.698.4010
john.sechser@tricommercial.com

Edward F. Del Beccaro | CalDRE #00642167
Dir: 925.296.3333 | Cell: 925.324.0088
ed.delbeccaro@tricommercial.com

FOR LEASE RETAIL/RESTAURANT PROPERTY

EXECUTIVE SUMMARY

1380 N. California Blvd.



OFFERING SUMMARY

Available SF: 4,000 - 8,600 SF

Lease Rate: Call for Custom Pricing

Lot Size: 0.68 Acres

Building Size: 95,200 SF

PROPERTY OVERVIEW

Mixed-use development in Walnut Creek consisting of 97 apartments and ±8,600 RSF of retail or restaurant space on the ground floor for lease.

Stunning architecture. Groundbreaking in Q4 of 2018 with Q2 of 2021 expected delivery.

High profile, highly visible retail/restaurant space with ample parking and potential for outdoor seating.

Contact John Sechser, exclusive agent, for leasing information at 925.296.3368

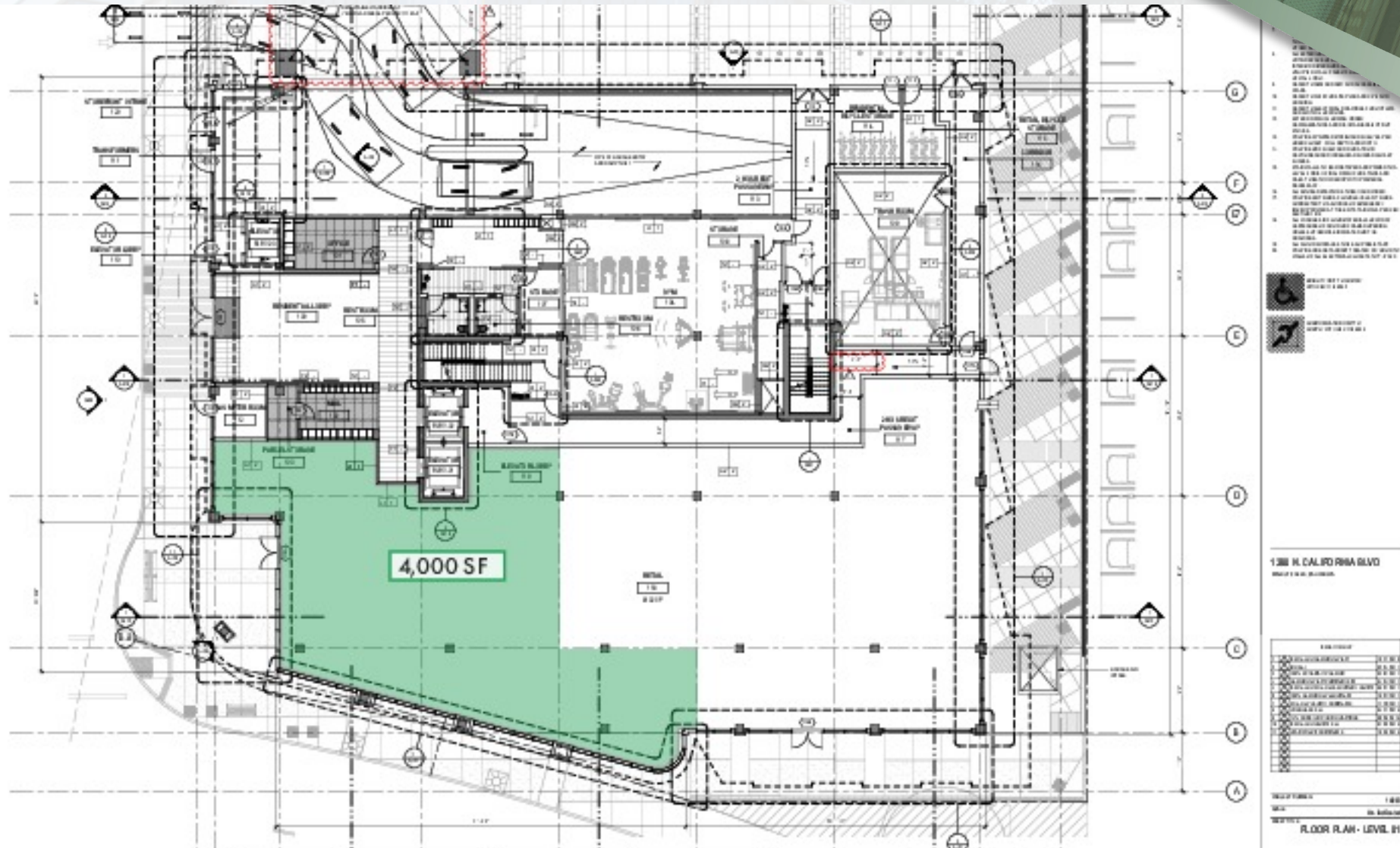
DEMOGRAPHICS

	1 MILE	2 MILES	3 MILES
Total Households	7,507	24,179	46,808
Total Population	15,671	51,701	100,265
Average HH Income	\$92,402	\$104,941	\$106,807

FOR LEASE RETAIL/RESTAURANT PROPERTY

POTENTIAL FLOOR PLAN #1

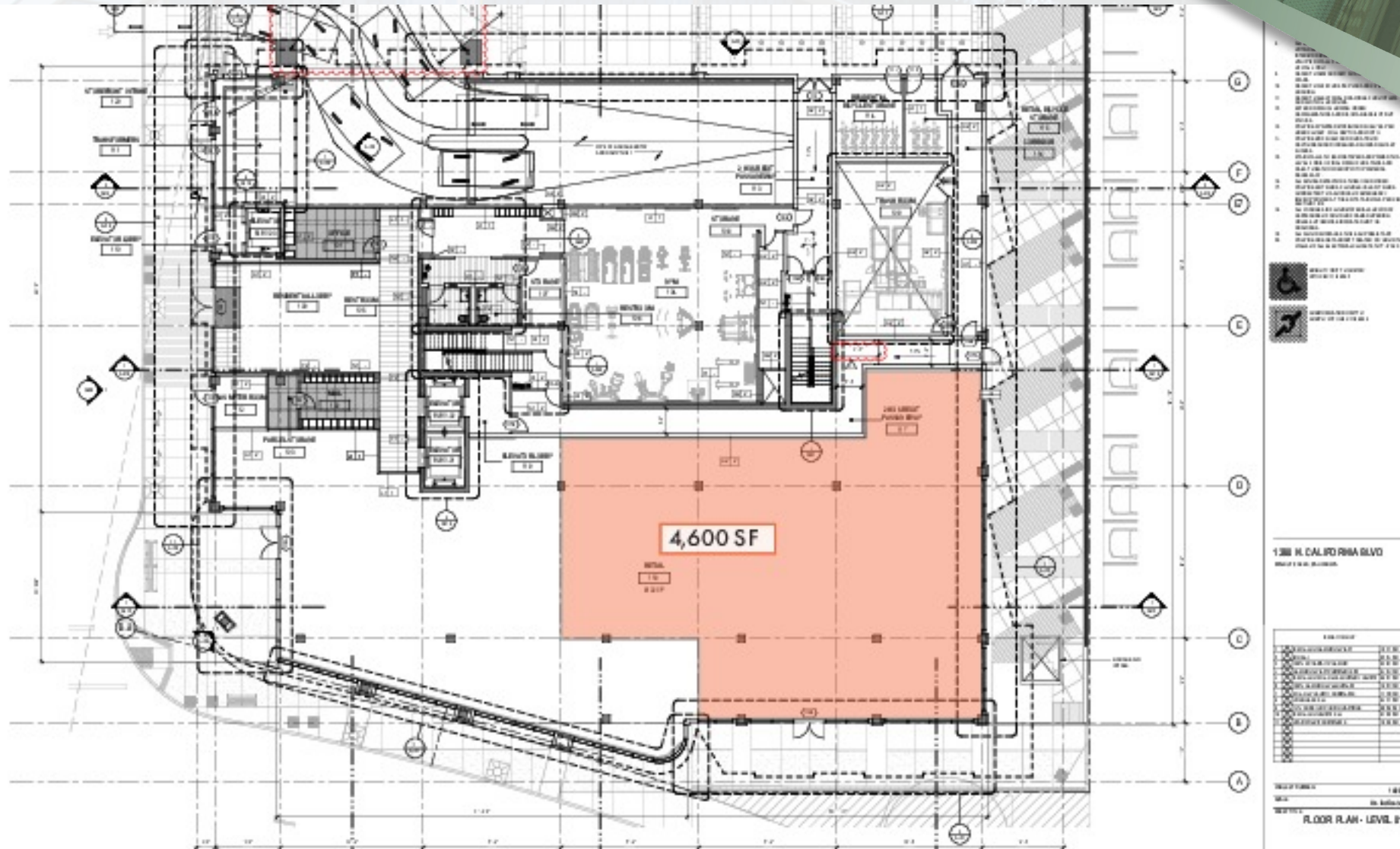
1380 N. California Blvd.



FOR LEASE RETAIL/RESTAURANT PROPERTY

POTENTIAL FLOOR PLAN #2

1380 N. California Blvd.



FOR LEASE RETAIL/RESTAURANT PROPERTY

AMENITIES MAP
1380 N. California Blvd.



JOHN SECHSER 925.296.3368
1380 N. California Blvd.

