

FOR SALE // 3-BUILDING PORTFOLIO FOR LEASE // 1927 ROSA PARKS



1927, 1924 & 1551 ROSA PARKS BLVD DETROIT, MICHIGAN

For more information, contact:

STEVE GORDON
(248) 948 0101
sgordon@signatureassociates.com

CHRIS MONSOUR
(248) 948 0107
cmonsour@signatureassociates.com

SCOTT ELLIOTT
(248) 948 4182
sellriott@signatureassociates.com



**SIGNATURE
ASSOCIATES**
KNOW SIGNATURE | KNOW RESULTS



PROPERTY OVERVIEW

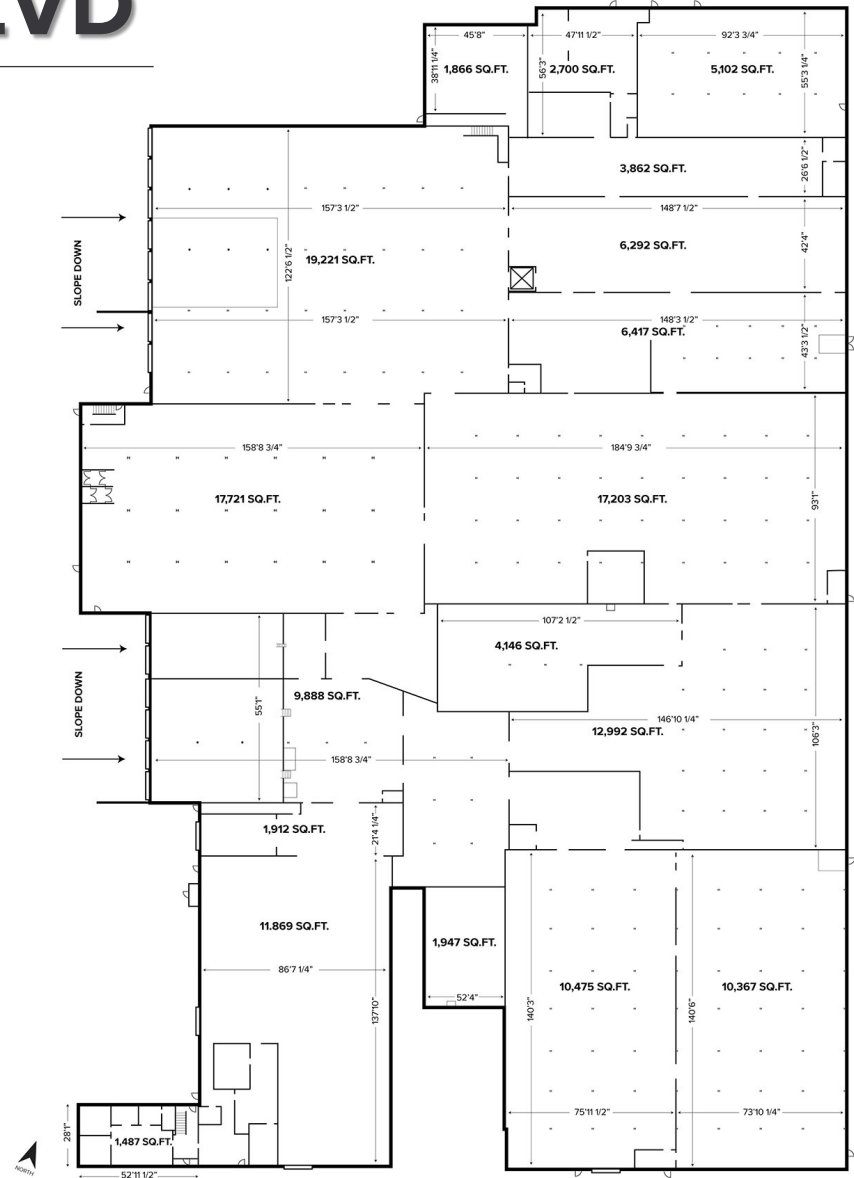
FOR SALE //
3-BUILDING PORTFOLIO
FOR LEASE //
1927 ROSA PARKS

- **1927 Rosa Parks**
271,797 sq. ft. / office to suit
- **1924 Rosa Parks – LEASED**
7,000 sq. ft. / 1,700 sq. ft. office
- **1551 Rosa Parks – LEASED**
36,067 sq. ft. / 7,490 sq. ft. office
- 12' – 30' clear height
- (24) 10x12, 12x14 grade level doors, (4) truckwells
- Zoned Industrial
- Buildings located in an opportunity zone
- In the heart of Corktown within walking distance to retail, restaurants, and bars
- Lease Rate: \$5.75/sq.ft. G+U
- Sale Price: Contact Broker

1927 ROSA PARKS BLVD



- 271,797 square feet
- Office to suit
- 18' – 30' ceiling height
- (16) 12x14 grade level doors
- Recently renovated and features include great soaring ceilings, exposed brick and expensive windows for nice natural light
- Lease rate: \$5.75/G+U





1927 ROSA PARKS BLVD // 271,797 SQ. FT.

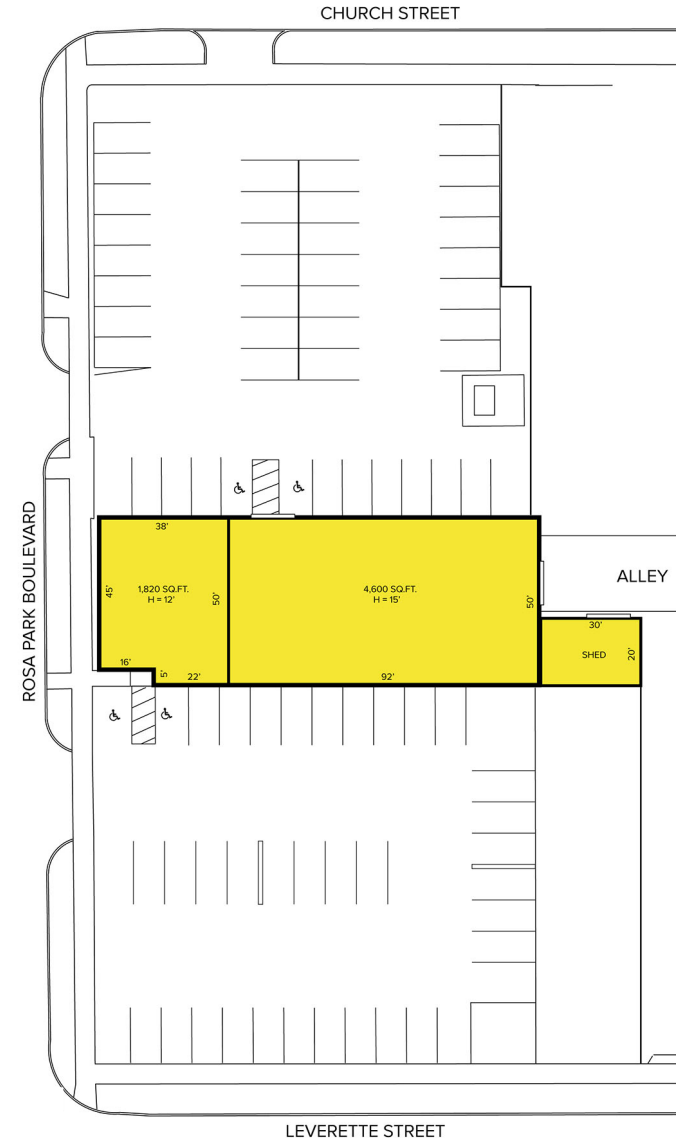


1924 ROSA PARKS BLVD



FULLY LEASED

- 7,000 square feet
- 1,700 square feet of office
- 12' – 15' ceiling height
- (2) 10x12 grade level doors
- 600 amps, 220 volts, 3-phase power
- Equipped with (5) private offices, small garage, (2) lavatories, and (1) shower





1924 ROSA PARKS BLVD // 7,000 SQ. FT.

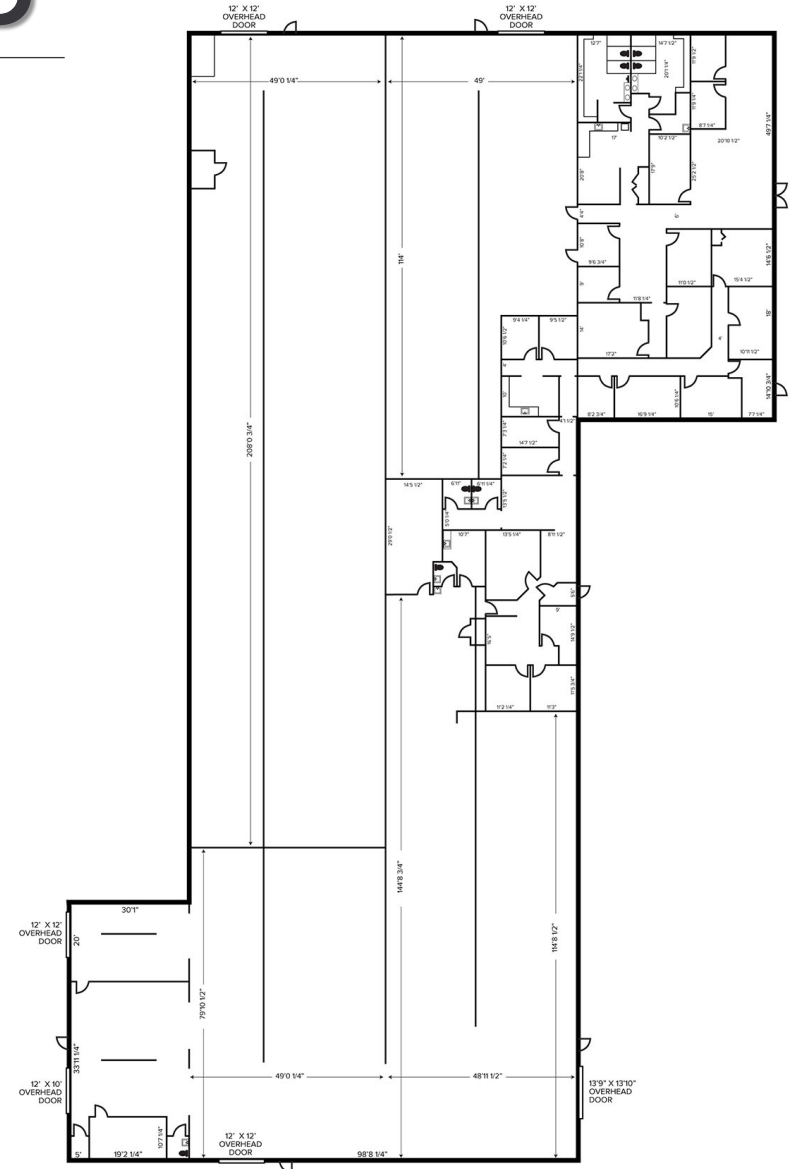


1551 ROSA PARKS BLVD



FULLY LEASED

- 36,067 square feet
- 7,490 square feet of office
- 19' ceiling height
- (6) 12x14 grade level doors
- (2) truckwells
- 220 volts, 3-phase power





1551 ROSA PARKS BLVD // 36,067 SQ. FT.



**SIGNATURE
ASSOCIATES**
KNOW SIGNATURE | KNOW RESULTS

LOCATED IN AN OPPORTUNITY ZONE

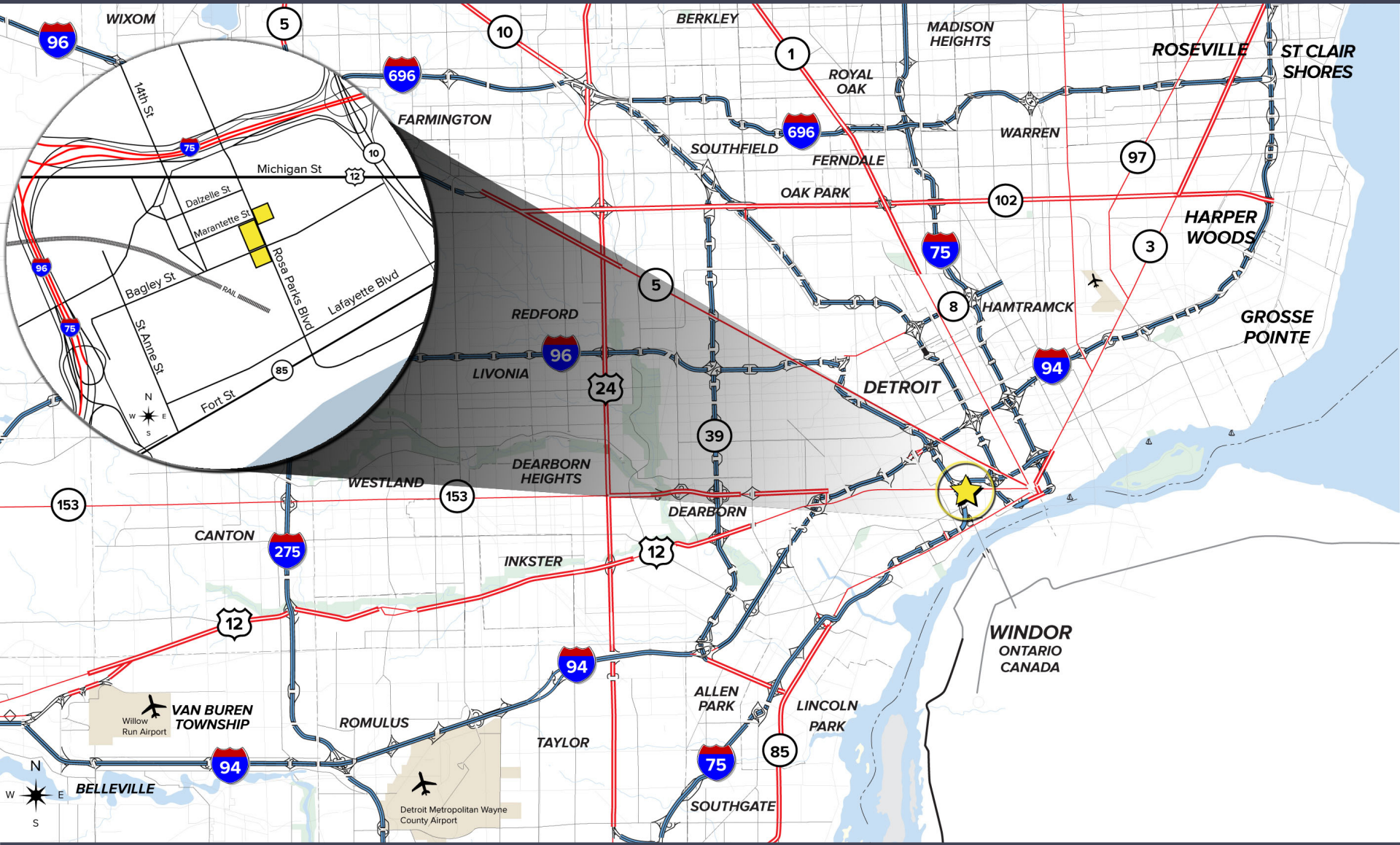
BRIDGE TO CANADA
AMBASSADOR BRIDGE



FORMER MICHIGAN
CENTRAL STATION



EASY ACCESS TO ALL MAJOR FREEWAYS



For more information, contact:

STEVE GORDON

(248) 948 0101

sgordon@signatureassociates.com

CHRIS MONSOUR

(248) 948 0107

cmonsour@signatureassociates.com

SCOTT ELLIOTT

(248) 948 4182

selliott@signatureassociates.com

SIGNATURE ASSOCIATES

One Towne Square, Suite 1200
Southfield, Michigan 48076
(248) 948 9000

www.signatureassociates.com



**SIGNATURE
ASSOCIATES**
KNOW SIGNATURE | KNOW RESULTS