

**FOR
LEASE**



PRINCESS ANNE EXECUTIVE PARK

Lease Rate:
Negotiable

PROPERTY OVERVIEW

This property is a charming retail strip center that is home to several locally owned small businesses. Join this wide array of tenants that vary from office to retail; including Smooth, Shine Yoga, Sunrise Counseling, and Sal's Pizza.

DEMOGRAPHICS

	1 MILE	5 MILES	10 MILES
Households:	1,215	37,228	157,803
Population:	4,028	113,074	429,385
Avg HH Income:	\$103,896	\$83,741	\$81,197

PROPERTY HIGHLIGHTS

- Small office space available with a kitchen
- Close to the Virginia Beach Courthouse
- Free & ample parking
- 24/7 Access
- Only one space left

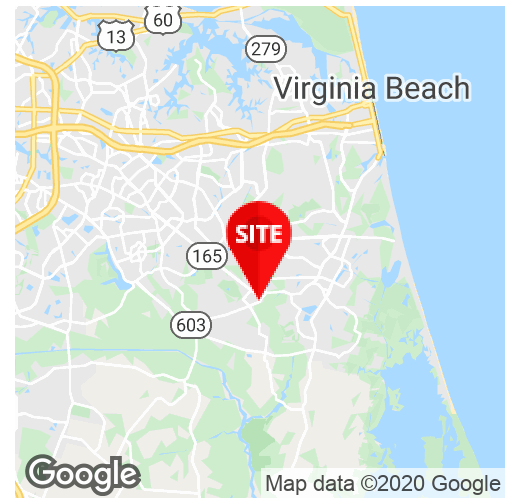
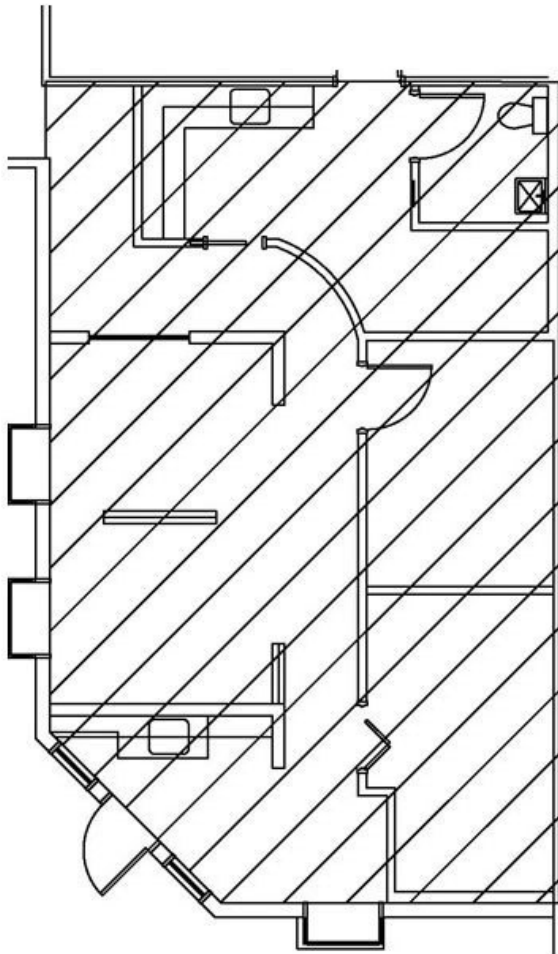
AVAILABLE SPACES

Available now 880 SF

FOR FURTHER INFORMATION, PLEASE CONTACT:
ELIZABETH C. PAASCH • epaasch@divaris.com • 757.333.4322



**FOR
LEASE**



FOR FURTHER INFORMATION, PLEASE CONTACT:
ELIZABETH C. PAASCH • epaasch@divaris.com • 757.333.4322

