

# 340 WEST 40TH STREET

BETWEEN EIGHTH & NINTH AVENUES | MIDTOWN WEST

**ksr**  
KASSIN SABBAGH REALTY



# 340 WEST 40TH STREET

BETWEEN EIGHTH & NINTH AVENUES | MIDTOWN WEST

## SIZE

Ground Floor

**4,000 SF**

Lower Level

**2,000 SF**

## FRONTAGE

25'

## CEILING HEIGHT

15'

## POSSESSION

Immediate

## ASKING RENT

Upon Request

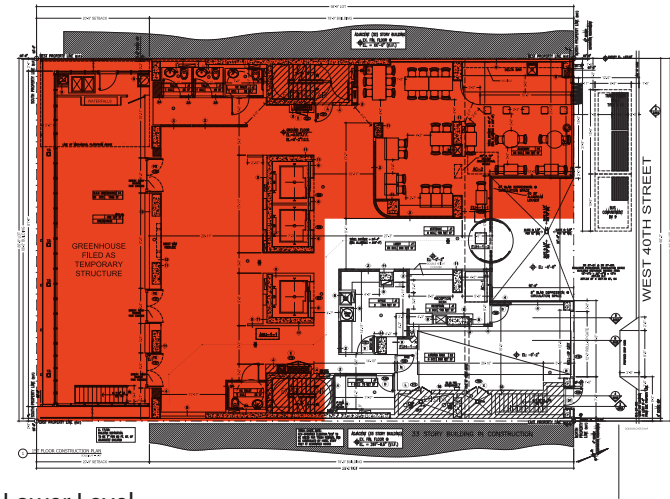
## TRANSPORTATION



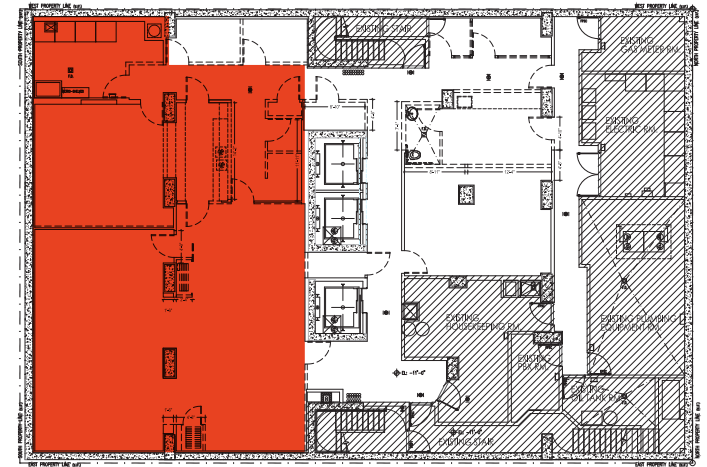
## COMMENTS

- At the Base of Delta by Marriott's Flagship Hotel
- At the crossroads of Times Square, Hells Kitchen & Hudson Yards
- Steps from Port Authority (70 Million Visitors Annually)
- Extremely Dense Office, Tourist and Transportation Corridor
- Multi Level restaurant opportunity with greenhouse dining

Ground Floor



Lower Level



CONTACT OUR BROKER(S) FOR MORE INFORMATION

**JEFF GEOGHEGAN**

JeffG@ksrny.com

**212.945.8984**

**MATTHEW FOGEL**

MFogel@ksrny.com

**203.962.5800**

# 340 WEST 40TH STREET

BETWEEN EIGHTH & NINTH AVENUES | MIDTOWN WEST

WEST 41ST STREET

WEST 40TH STREET

WEST 39TH STREET

WEST 38TH STREET

WEST 37TH STREET



EIGHTH AVENUE

N Q R W

CONTACT OUR BROKER(S) FOR MORE INFORMATION



**JEFF GEOGHEGAN**

JeffG@ksrny.com

**212.945.8984**

**MATTHEW FOGEL**

MFogel@ksrny.com

**203.962.5800**

All information supplied in this marketing presentation and/or flyer is from sources deemed reliable and is furnished subject to errors, omissions, modifications, removal of listings from sale/lease and to any listing condition. Any square footage, dimensions, floor plans and/or technical data set forth are approximations and are subject to further elaboration/confirmation.