

FOR LEASE > ±1,249 to ±4,940 SF SUITES

1528 S. El Camino Real

San Mateo, CA



Building Highlights

- » Now available: Suite 204: ±1,249 Square Feet
Suite 100: ±4,940 Square Feet
- » Ground floor features open office space with high ceilings
- » Building upgrades in progress
- » Secure underground parking
- » Walking distance to Hayward Park Caltrain Station
- » Excellent access to SR 92, US 101 and I-280
- » Close Proximity to Amenities
- » \$3.65 PSF/Month NNN
- » Estimated NNN cost: \$0.46 PSF/Month



APPROXIMATE TRAVEL TIMES



BRETT WEBER
brett.weber@colliers.com
CA License No. 00901454

STEVE DIVNEY
steve.divney@colliers.com
CA License No. 01216239

JOHN MCLELLAN
john.mclellan@colliers.com
CA License No. 01869489

MAC HART
mac.hart@colliers.com
CA License No. 01988510

+1 650 670 7586

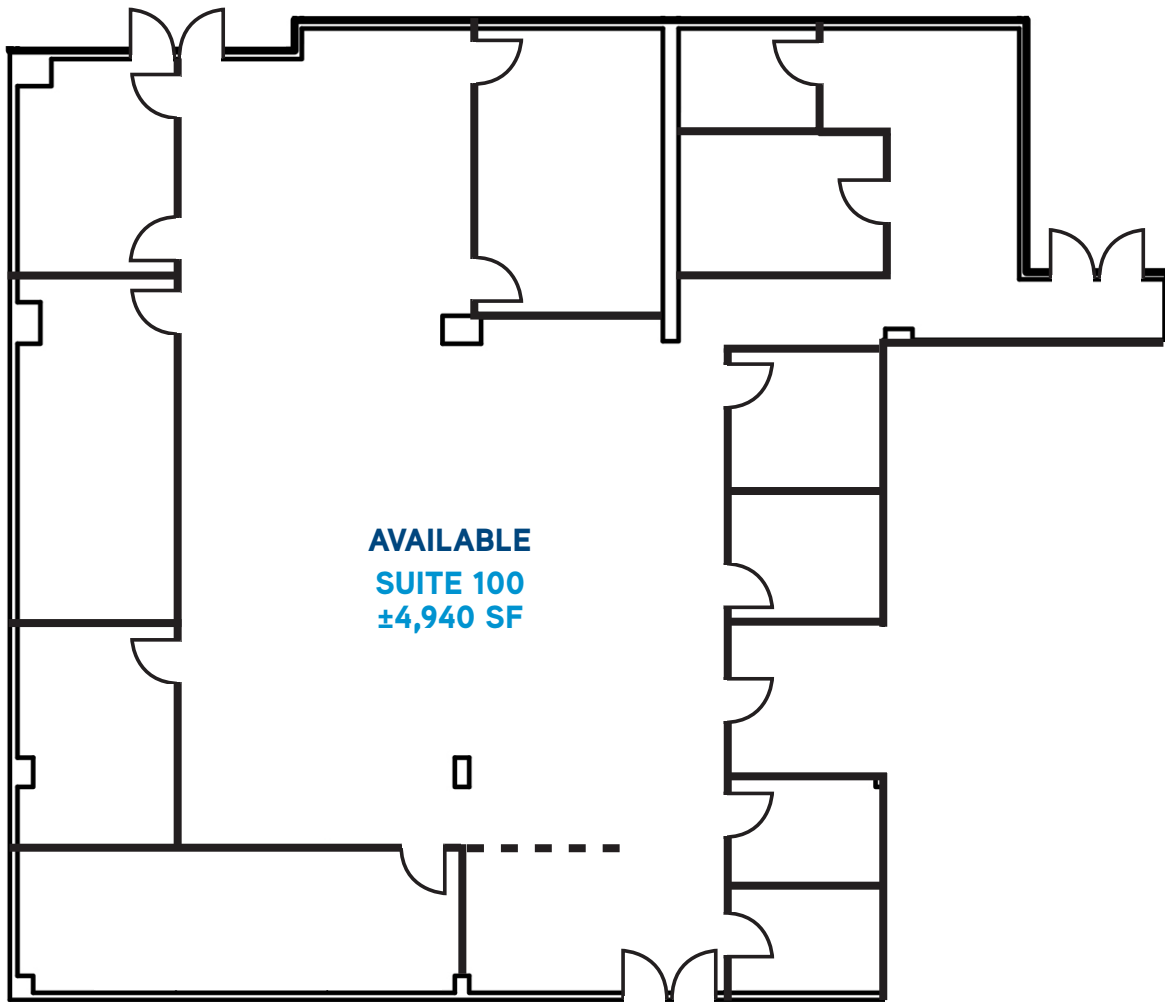
FOR LEASE > ±1,249 to ±4,940 SF SUITES

1528 S. El Camino Real

San Mateo, CA



Floor Plan > Suite 100



Drawings Not Exact, Not to Scale. The information furnished has been obtained from sources we deem reliable and is submitted subject to errors, omissions and changes. Although Colliers International has no reason to doubt its accuracy, we do not guarantee it. All information should be verified by the recipient prior to lease, purchase, exchange, or execution of legal documents. © 2017 Colliers International

BRETT WEBER
brett.weber@colliers.com
CA License No. 00901454

STEVE DIVNEY
steve.divney@colliers.com
CA License No. 01216239

JOHN MCLELLAN
john.mclellan@colliers.com
CA License No. 01869489

MAC HART
mac.hart@colliers.com
CA License No. 01988510

+1 650 670 7586

FOR LEASE > ±1,249 to ±4,940 SF SUITES

1528 S. El Camino Real

San Mateo, CA



Floor Plan > Suite 204



Drawings Not Exact, Not to Scale. The information furnished has been obtained from sources we deem reliable and is submitted subject to errors, omissions and changes. Although Colliers International has no reason to doubt its accuracy, we do not guarantee it. All information should be verified by the recipient prior to lease, purchase, exchange, or execution of legal documents. © 2017 Colliers International

BRETT WEBER
brett.weber@colliers.com
CA License No. 00901454

STEVE DIVNEY
steve.divney@colliers.com
CA License No. 01216239

JOHN MCLELLAN
john.mclellan@colliers.com
CA License No. 01869489

MAC HART
mac.hart@colliers.com
CA License No. 01988510

+1 650 670 7586

FOR LEASE > ±1,249 to ±4,940 SF SUITES

1528 S. El Camino Real

San Mateo, CA



Interior Photos



BRETT WEBER
brett.weber@colliers.com
CA License No. 00901454

STEVE DIVNEY
steve.divney@colliers.com
CA License No. 01216239

JOHN MCLELLAN
john.mclellan@colliers.com
CA License No. 01869489

MAC HART
mac.hart@colliers.com
CA License No. 01988510

+1 650 670 7586