

HIGH-PROFILE RETAIL CALABASAS POINT STORE

4774 Park Granada, Calabasas, CA 91302



Greg Offsay x104

greg@illicre.com

DRE #01837719

Carter Andrews x132

carter@illicre.com

DRE #01975444

Austin Harrell x322

austin@illicre.com

DRE #02051633



17547 Ventura Blvd., Ste. 304 · Encino CA 91316 · 818.501.2212/Phone · 818.501.2202/Fax · www.illicre.com · BRE #01834124

This information has been secured from sources we believe to be reliable, but we make no representations or warranties, expressed or implied, as to the accuracy of the information. References to square footage are approximate. References to neighboring retailers are subject to change, and may not be adjacent to the vacancy being marketed either prior to, during, or after leases are signed. Lessee must verify the information and bears all risk for any inaccuracies.

HIGH-PROFILE RETAIL CALABASAS POINT STORE

4774 Park Granada, Calabasas, CA 91302



PROPERTY FEATURES

- ±964 SF High-end olive oil tasting room available for sublease
- High profile busy neighborhood center across from Calabasas Commons
- Includes Health Department approved 'clean room' and beautiful retail showroom
- Co-tenants include Blue Table, Banc of California, Kumon, Glo Dry, Shabuya and USPS



AREA AMENITIES

- Sought-after retail trade area in affluent Calabasas community
- High household income over \$204,000
- Densely populated residential with new mix-use developments in the community underway
- Convenient access to 101 Freeway
- Close proximity to many national and regional tenants including



Greg Offsay x104

greg@illicre.com

DRE #01837719

Carter Andrews x132

carter@illicre.com

DRE #01975444

Austin Harrell x322

austin@illicre.com

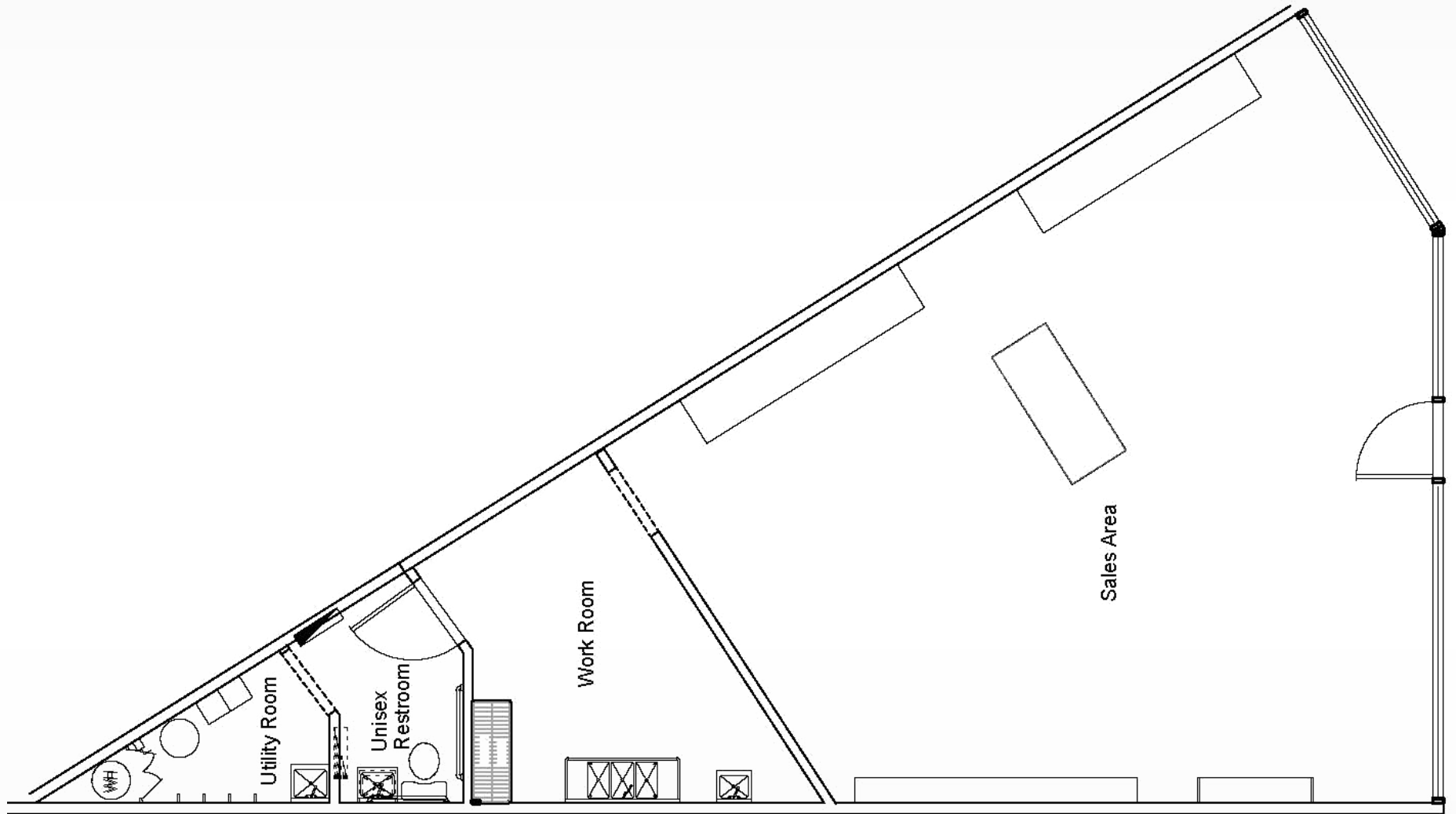
DRE #02051633



17547 Ventura Blvd., Ste. 304 · Encino CA 91316 · 818.501.2212/Phone · 818.501.2202/Fax · www.illicre.com · BRE #01834124

HIGH-PROFILE RETAIL CALABASAS POINT STORE

4774 Park Granada, Calabasas, CA 91302



Greg Offsay x104

greg@illicre.com

DRE #01837719

Carter Andrews x132

carter@illicre.com

DRE #01975444

Austin Harrell x322

austin@illicre.com

DRE #02051633



17547 Ventura Blvd., Ste. 304 · Encino CA 91316 · 818.501.2212/Phone · 818.501.2202/Fax · www.illicre.com · BRE #01834124

This information has been secured from sources we believe to be reliable, but we make no representations or warranties, expressed or implied, as to the accuracy of the information. References to square footage are approximate. References to neighboring retailers are subject to change, and may not be adjacent to the vacancy being marketed either prior to, during, or after leases are signed. Lessee must verify the information and bears all risk for any inaccuracies.

HIGH-PROFILE RETAIL CALABASAS POINT STORE

4774 Park Granada, Calabasas, CA 91302



Greg Offsay x104

greg@illicre.com

DRE #01837719

Carter Andrews x132

carter@illicre.com

DRE #01975444

Austin Harrell x322

austin@illicre.com

DRE #02051633

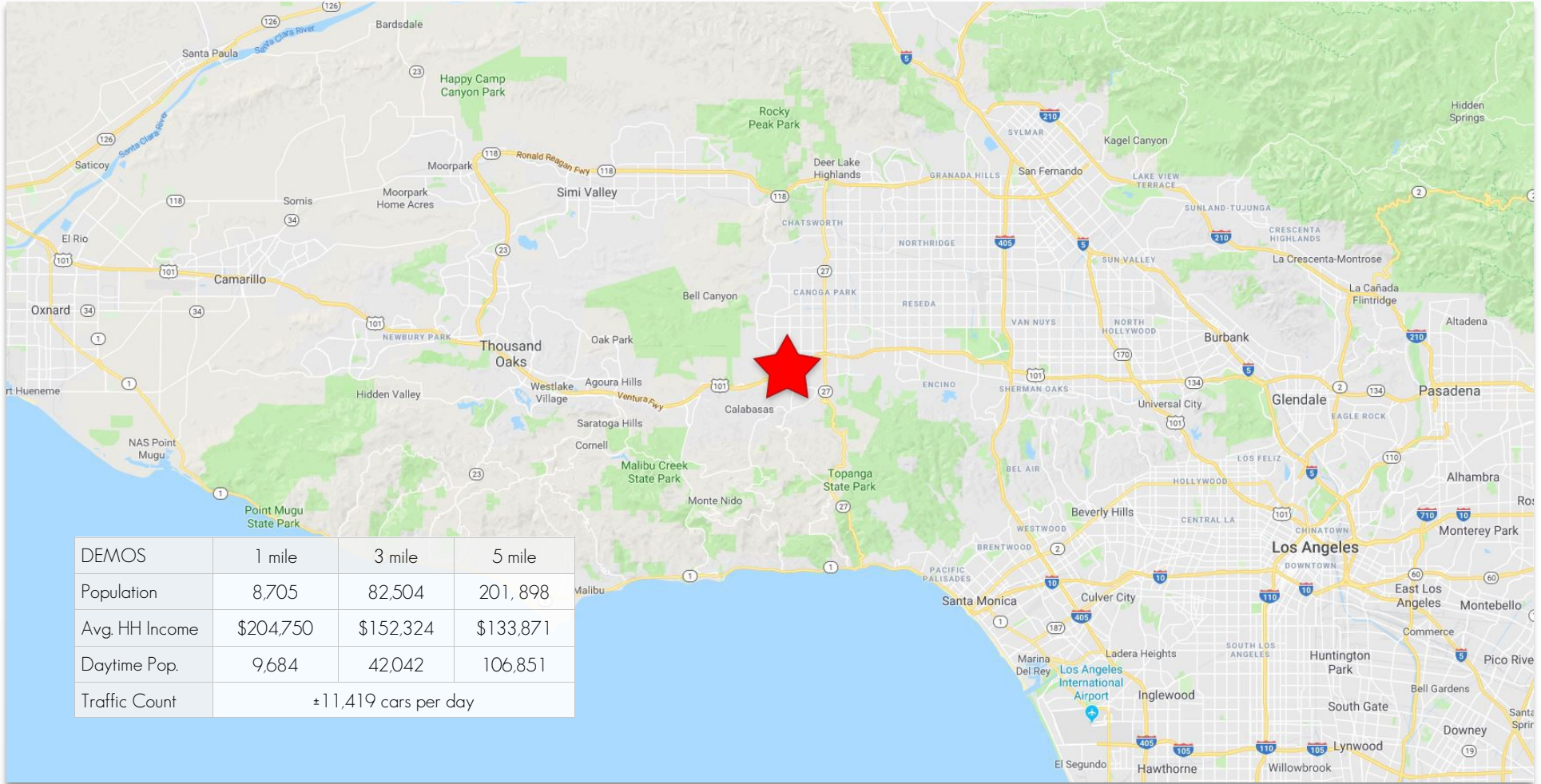


17547 Ventura Blvd., Ste. 304 · Encino CA 91316 · 818.501.2212/Phone · 818.501.2202/Fax · www.illicre.com · BRE #01834124

This information has been secured from sources we believe to be reliable, but we make no representations or warranties, expressed or implied, as to the accuracy of the information. References to square footage are approximate. References to neighboring retailers are subject to change, and may not be adjacent to the vacancy being marketed either prior to, during, or after leases are signed. Lessee must verify the information and bears all risk for any inaccuracies.

HIGH-PROFILE RETAIL CALABASAS POINT STORE

4774 Park Granada, Calabasas, CA 91302



Greg Offsay x104

greg@illicre.com

DRE #01837719

Carter Andrews x132

carter@illicre.com

DRE #01975444

Austin Harrell x322

austin@illicre.com

DRE #02051633



17547 Ventura Blvd., Ste. 304 · Encino CA 91316 · 818.501.2212/Phone · 818.501.2202/Fax · www.illicre.com · BRE #01834124

This information has been secured from sources we believe to be reliable, but we make no representations or warranties, expressed or implied, as to the accuracy of the information. References to square footage are approximate. References to neighboring retailers are subject to change, and may not be adjacent to the vacancy being marketed either prior to, during, or after leases are signed. Lessee must verify the information and bears all risk for any inaccuracies.