

LEASE RATE REDUCED!**OFFICE SPACE FOR LEASE | MONUMENT SIGNAGE AVAILABLE****Office Lease Rate**

\$21.00 - \$23.00/sf Full Service Gross

Availability

- 1st floor - 2,396 RSF
- Immediate availability

**Building Highlights**

- Class A office space
- Excellent access to C-470
- 3.5:1,000 sf parking ratio
- Underground parking options available
- Exceptional visibility
- Floor to ceiling windows
- Bank branch and drive-thru on-site
- Many nearby amenities
- Mountain views
- 24/7 building access

Partnership. Performance.

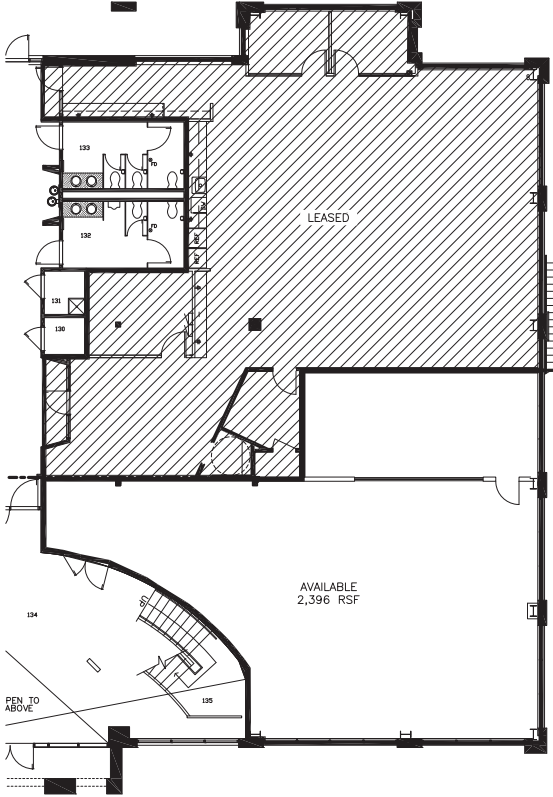
For more information, please contact:

Howard Schmidt, Vice President
720.508.8104
howard.schmidt@avisonyoung.com

Justin Rayburn, Principal
720.508.8105
justin.rayburn@avisonyoung.com

Floorplan

**FIRST FLOOR
2,396 RSF**



Location Aerial

