

1900 POINT WEST WAY

Sacramento, CA



OFFICE SPACE FOR LEASE

±483 TO ±2,649

Rentable Square Feet (RSF)

PROPERTY INFORMATION

- Asking Rate: \$1.75 PSF with full service
- Beautiful atrium office setting
- Across the street from Arden Fair Mall
- Excellent proximity to numerous retail & dining amenities
- Great access to Business 80 & Highway 160
- 4.0/1,000 SF parking ratio
- On-site common area conference room

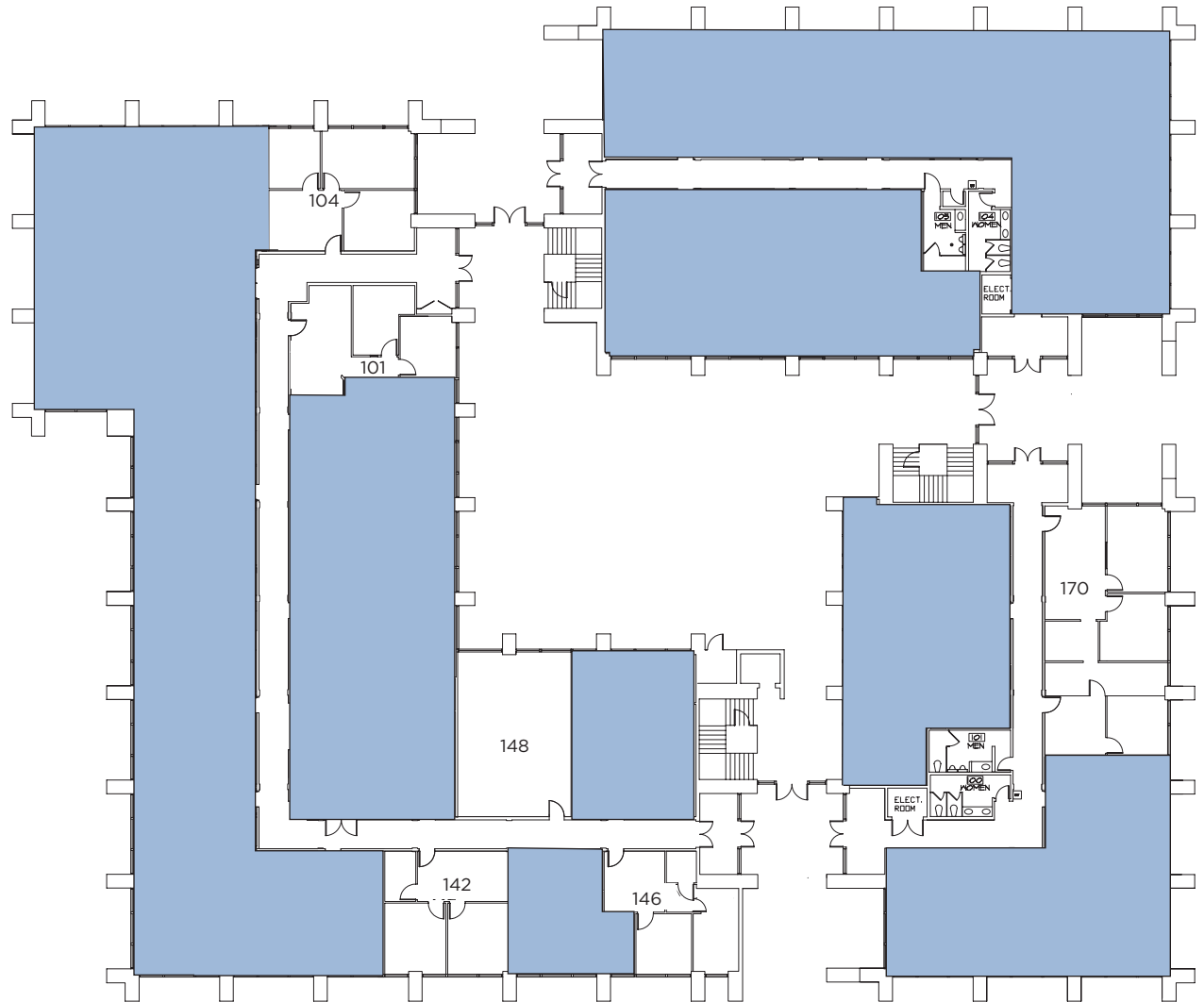
NEW RENOVATIONS

- Suite signage
- Building directories
- Interior and exterior paint
- Common-area lighting
- Suite entry doors
- Interior common-area carpet
- Building monument signage

Move-in-Ready Spec Suites Available

First Floor

SUITE	RENTABLE SQUARE FEET
101	±612
104	±754
142	±649
146	±547
148	±483
170	±1,607



1900 POINT WEST WAY
Sacramento, CA

KEVIN PARTINGTON
Executive Director
(916) 288.4807
kevin.partington@cushwake.com
CA License NO: 01199010

SEAN MULLEN
Senior Director
(916) 288.4811
sean.mullen@cushwake.com
CA License NO: 01845406

KEVIN GOLDTHWAITE
Director
(916) 403.1818
kevin.goldthwaite@cushwake.com
CA License NO: 01911862

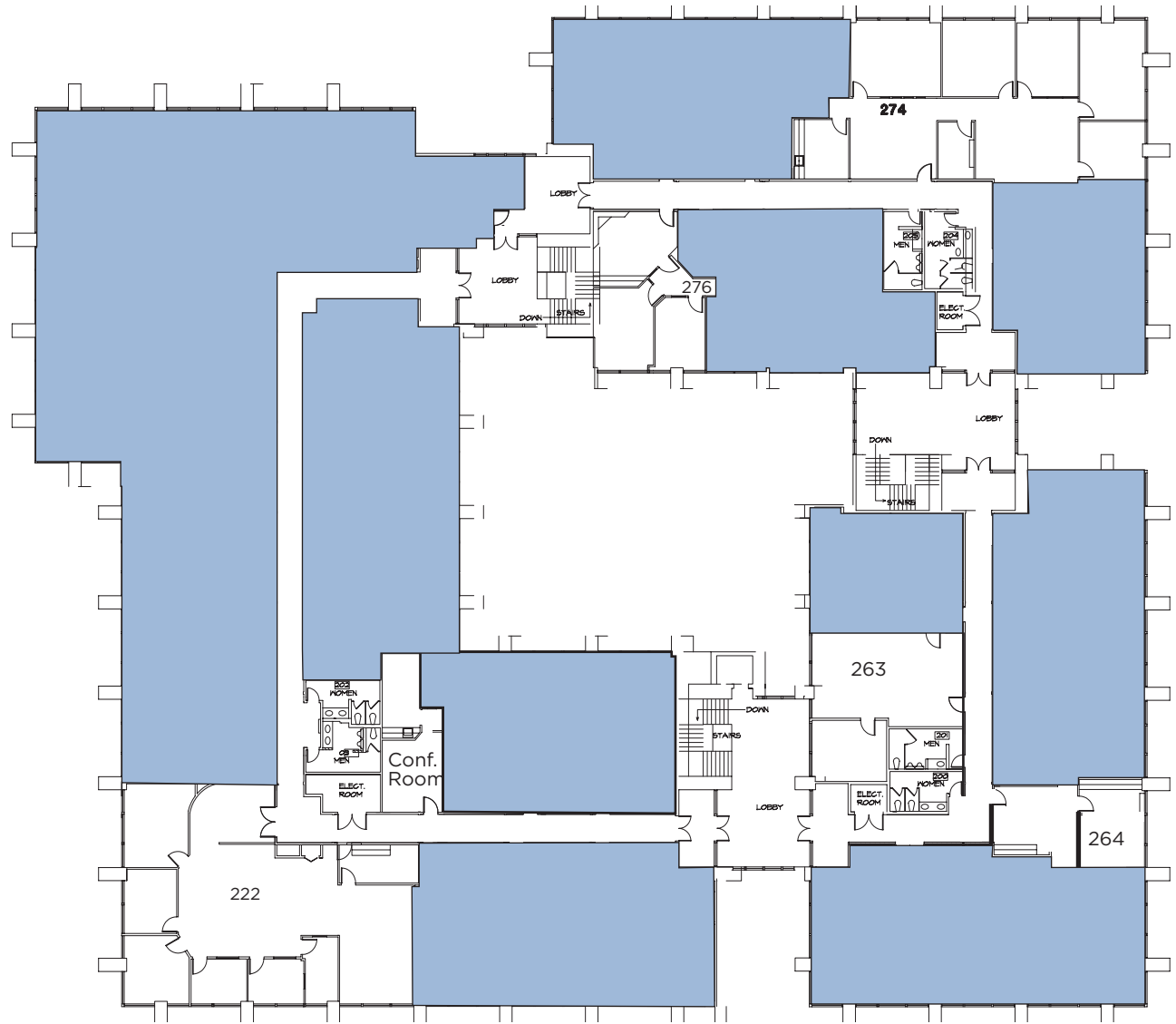
CUSHMAN & WAKEFIELD
cushmanwakefield.com

Second Floor

SUITE	RENTABLE SQUARE FEET
222	±2,649
263	±909
264	±569 <i>Available in 30 days</i>
274	±2,590 <i>Available in 30 days</i>
276	±805



1900 POINT WEST WAY
Sacramento, CA



KEVIN PARTINGTON
Executive Director
(916) 288.4807
kevin.partington@cushwake.com
CA License NO: 01199010

SEAN MULLEN
Senior Director
(916) 288.4811
sean.mullen@cushwake.com
CA License NO: 01845406

KEVIN GOLDTHWAITE
Director
(916) 403.1818
kevin.goldthwaite@cushwake.com
CA License NO: 01911862

CUSHMAN & WAKEFIELD
cushmanwakefield.com



Airport
23 minutes



Downtown Sacramento
10 minutes

Arden Fair Mall

SITE

Cal Expo



1900 POINT WEST WAY

Sacramento, CA

KEVIN PARTINGTON
Executive Director
(916) 288.4807
kevin.partington@cushwake.com
CA License NO: 01199010

SEAN MULLEN
Senior Director
(916) 288.4811
sean.mullen@cushwake.com
CA License NO: 01845406

KEVIN GOLDTHWAITE
Director
(916) 403.1818
kevin.goldthwaite@cushwake.com
CA License NO: 01911862

CUSHMAN & WAKEFIELD
cushmanwakefield.com



1900 POINT WEST WAY Sacramento, CA

[View Site Specific COVID-19 Prevention Plan](#)

©2020 Cushman & Wakefield. All rights reserved. The information contained in this communication is strictly confidential. This information has been obtained from sources believed to be reliable but has not been verified. No warranty or representation, express or implied, is made as to the condition of the property (or properties) referenced herein or as to the accuracy or completeness of the information contained herein, and same is submitted subject to errors, omissions, change of price, rental or other conditions, withdrawal without notice, and to any special listing conditions imposed by the property owner(s). any projections, opinions or estimates are subject to uncertainty and do not signify current or future property performance.

KEVIN PARTINGTON
Executive Director
(916) 288.4807
kevin.partington@cushwake.com
CA License NO: 01199010

SEAN MULLEN
Senior Director
(916) 288.4811
sean.mullen@cushwake.com
CA License NO: 01845406

KEVIN GOLDTHWAITE
Director
(916) 403.1818
kevin.goldthwaite@cushwake.com
CA License NO: 01911862

 **CUSHMAN & WAKEFIELD**
cushmanwakefield.com