



Property Highlights

- ±7,632 SF Condo Office
- Call for sale price
- Parking Ratio: 4.23/1,000
- High-end medical office with 2 procedure rooms/OBL's and clinical space
- Zoning: C-2, Surprise
- Located 1.5 miles east of Loop 303
- Located 1.0 miles south of Bell Rd
- Banner Del Webb submarket
- APNs: 501-18-503, 501-18-504, 501-18-505, 501-18-506

Surprise Statistics

5-mile Radius

2019 Population:	193,500
Average Household Income:	\$72,900
Growth Rate:	8%

Tom Weinhold
Managing Director
+1 602 224 4428
tom.weinhold@cushwake.com

Sheila Bale
Managing Director
+1 602 224 4454
sheila.bale@cushwake.com

Kristina Cutillo
Associate
+1 602 224 4453
kristina.cutillo@cushwake.com

2555 E Camelback Road, Suite 400
Phoenix, Arizona 85016
main +1 602 954 9000 | fax +1 602 253 0528
cushmanwakefield.com



The Offices at Reems | Office Condos

15571 N Reems Rd - Bldg D, Surprise, AZ 85374

FOR SALE



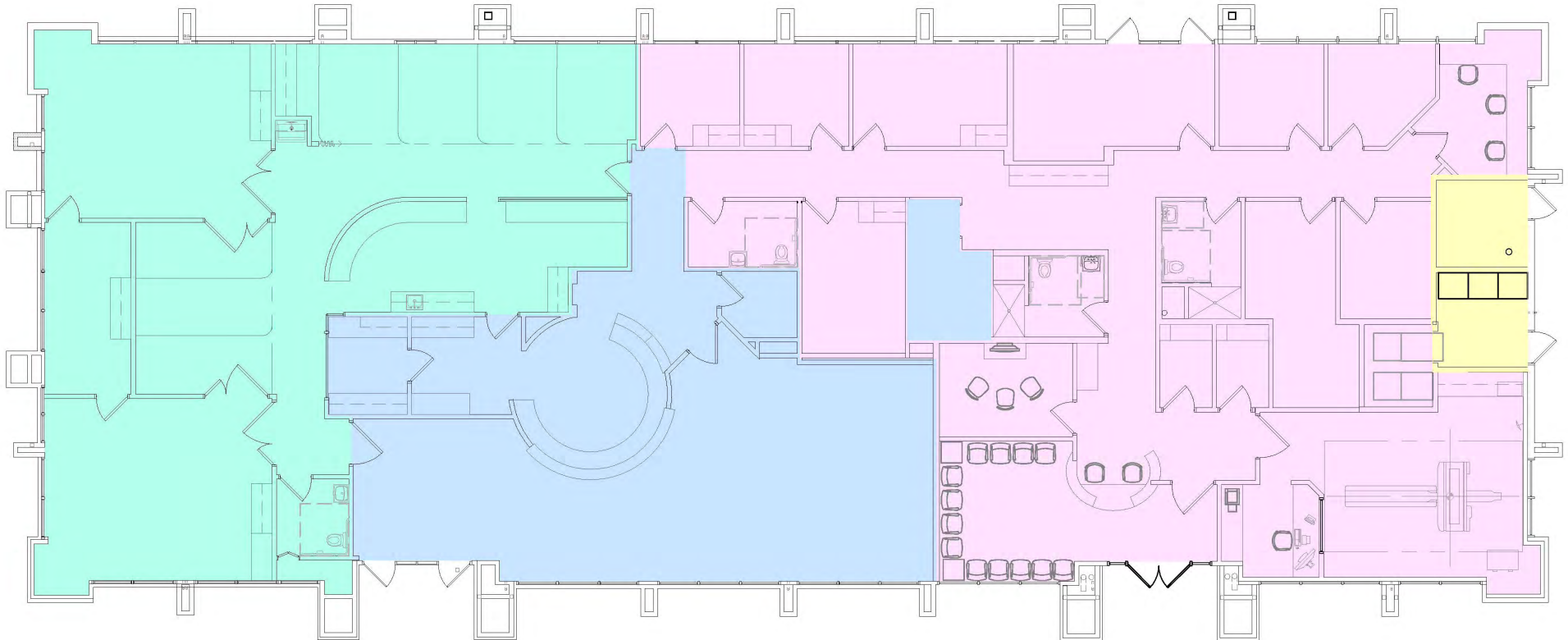
Tom Weinhold
Managing Director
+1 602 224 4428
tom.weinhold@cushwake.com

Sheila Bale
Managing Director
+1 602 224 4454
sheila.bale@cushwake.com

Kristina Cutillo
Associate
+1 602 224 4453
kristina.cutillo@cushwake.com

2555 E Camelback Road, Suite 400
Phoenix, Arizona 85016
main +1 602 954 9000 | fax +1 602 253 0528
cushmanwakefield.com

Floor Plan



Tom Weinhold
Managing Director
+1 602 224 4428
tom.weinhold@cushwake.com

Sheila Bale
Managing Director
+1 602 224 4454
sheila.bale@cushwake.com

Kristina Cutillo
Associate
+1 602 224 4453
kristina.cutillo@cushwake.com

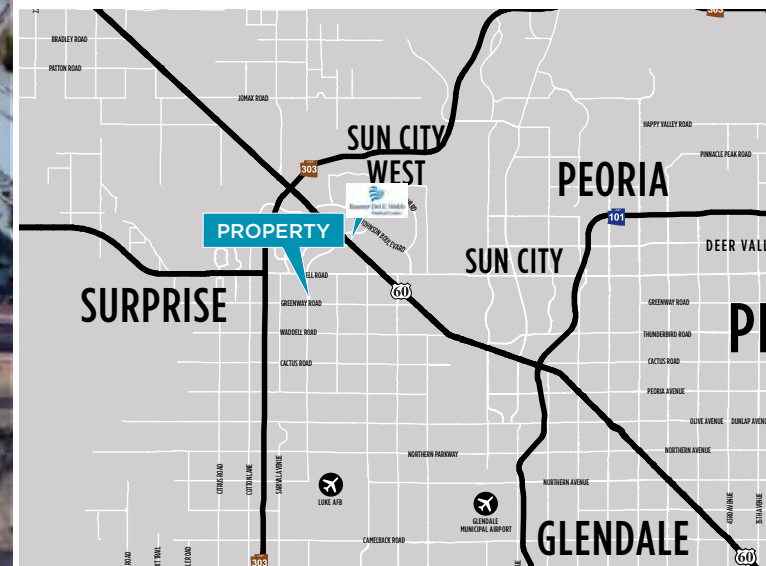
2555 E Camelback Road, Suite 400
Phoenix, Arizona 85016
main +1 602 954 9000 | fax +1 602 253 0528
cushmanwakefield.com



The Offices at Reems | Office Condos

15571 N Reems Rd - Bldg D, Surprise, AZ 85374

FOR SALE



Tom Weinhold
Managing Director
+1 602 224 4428
tom.weinhold@cushwake.com

Sheila Bale
Managing Director
+1 602 224 4454
sheila.bale@cushwake.com

Kristina Cutillo
Associate
+1 602 224 4453
kristina.cutillo@cushwake.com

2555 E Camelback Road, Suite 400
Phoenix, Arizona 85016
main +1 602 954 9000 | fax +1 602 253 0528
cushmanwakefield.com