

210 Allegheny Ave

Towson, Maryland 21204
Baltimore County

FOR LEASE



Building Features

Situated in the Towson Central Business District, **210 Allegheny Avenue** is located within walking distance of the Baltimore County Circuit Court and various other county municipal buildings. It is also in close proximity to numerous restaurants and other amenities.

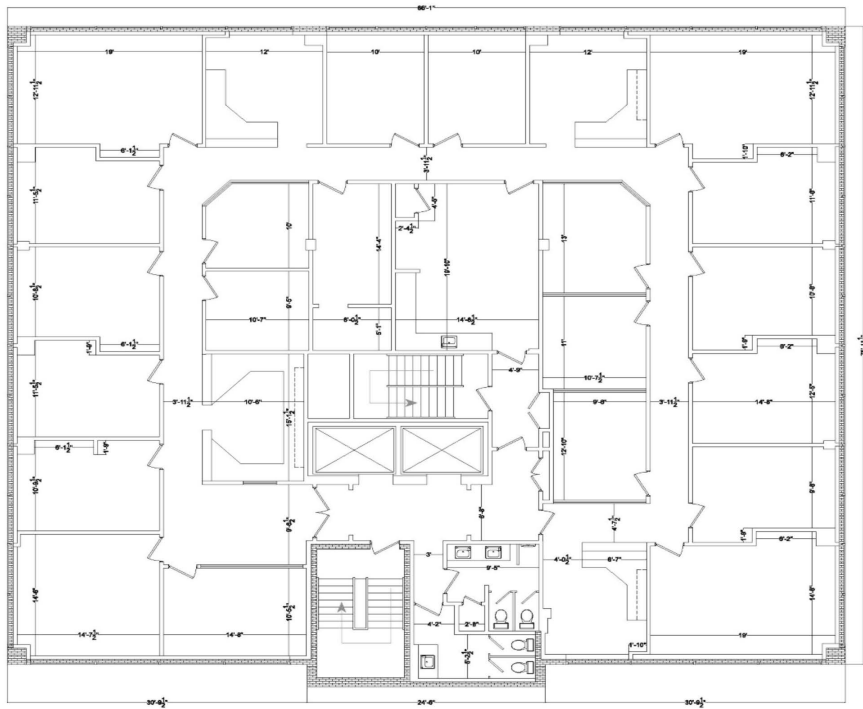
The recent completion of the \$1M exterior and interior common area renovations to this 5-story 30,432 SF ± office building offers its tenants state of the art technology and stylish décor.

Additional Features Include:

- Dedicated parking for tenants. Covered parking accessible from Allegheny Avenue and uncovered upper parking deck accessible from Bosley Avenue.
- Basement storage space available for tenants.
- Building Signage available.



Typical Floor Plan



- 5-Story Office Building 30,432 SF with 6,604 SF per floor
- Complete exterior renovation.
- Interior renovations to common areas include updated bathrooms and lobbies.
- New HVAC system being installed.
- Dedicated parking for tenants. Covered parking accessible from Allegheny Avenue and uncovered upper parking deck accessible from Bosley Avenue.
- Basement storage space available for tenants.
- Building Signage available

Location Proximity

- 1 Block** Baltimore County Circuit Court
- 3 Blocks** Towson Circle Shops &
- 0.4 Miles** Restaurants Towson University
- 0.5 Miles** Towson Mall
- 1.3 Miles** I-695



To see more properties like this one,
please visit our website: www.cregllc.com

1343 ASHTON ROAD, SUITE B, HANOVER, MD 21076
main (410) 787-8799 • fax (410) 787-8872

CHRIS MURRAY
443.883.8173
cmurray@cregllc.com

MATT LARAWAY, SIOR
443.883.8182
mlaraway@cregllc.com