

2,051 SF END CAP AVAILABLE



Property Features

- 2,051 SF end cap available
- Great visibility
- Corner of Timberlake Road and Jordan Drive
- 32,000 VPD at intersection

Join Nearby Retailers

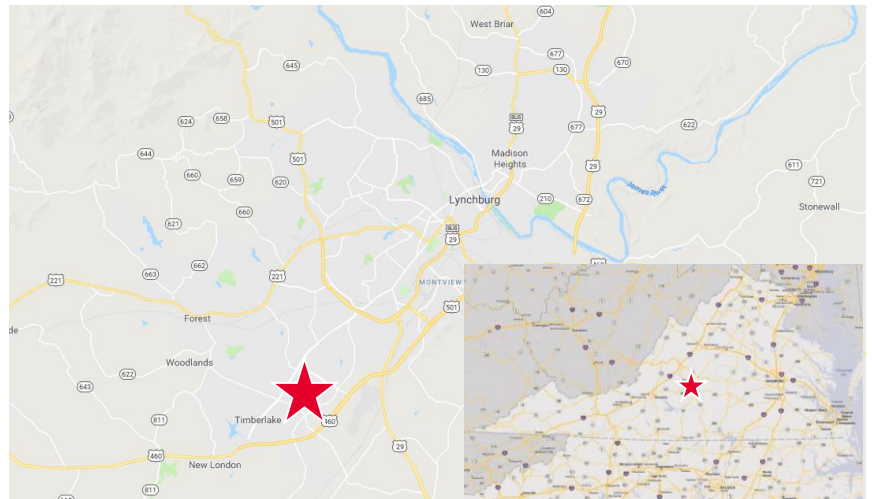


Specifications

Available SF	2,051 SF
Rental Rate	\$23.00 PSF NNN

Demographics

	1 Mile	3 Miles	5 Miles
Population	7,132	36,700	70,716
Avg. HH Income	\$58,222	\$66,703	\$67,067
Daytime Population	3,565	15,312	34,297



For more information, contact:

JOHN NIELSEN
Senior Vice President
540 767 3009
john.nielsen@thalhimer.com

CONNIE JORDAN NIELSEN
Senior Vice President
804 697 3569
connie.nielsen@thalhimer.com

310 First Street, Suite 300
Roanoke, VA 24011
www.thalhimer.com



For more information, contact:

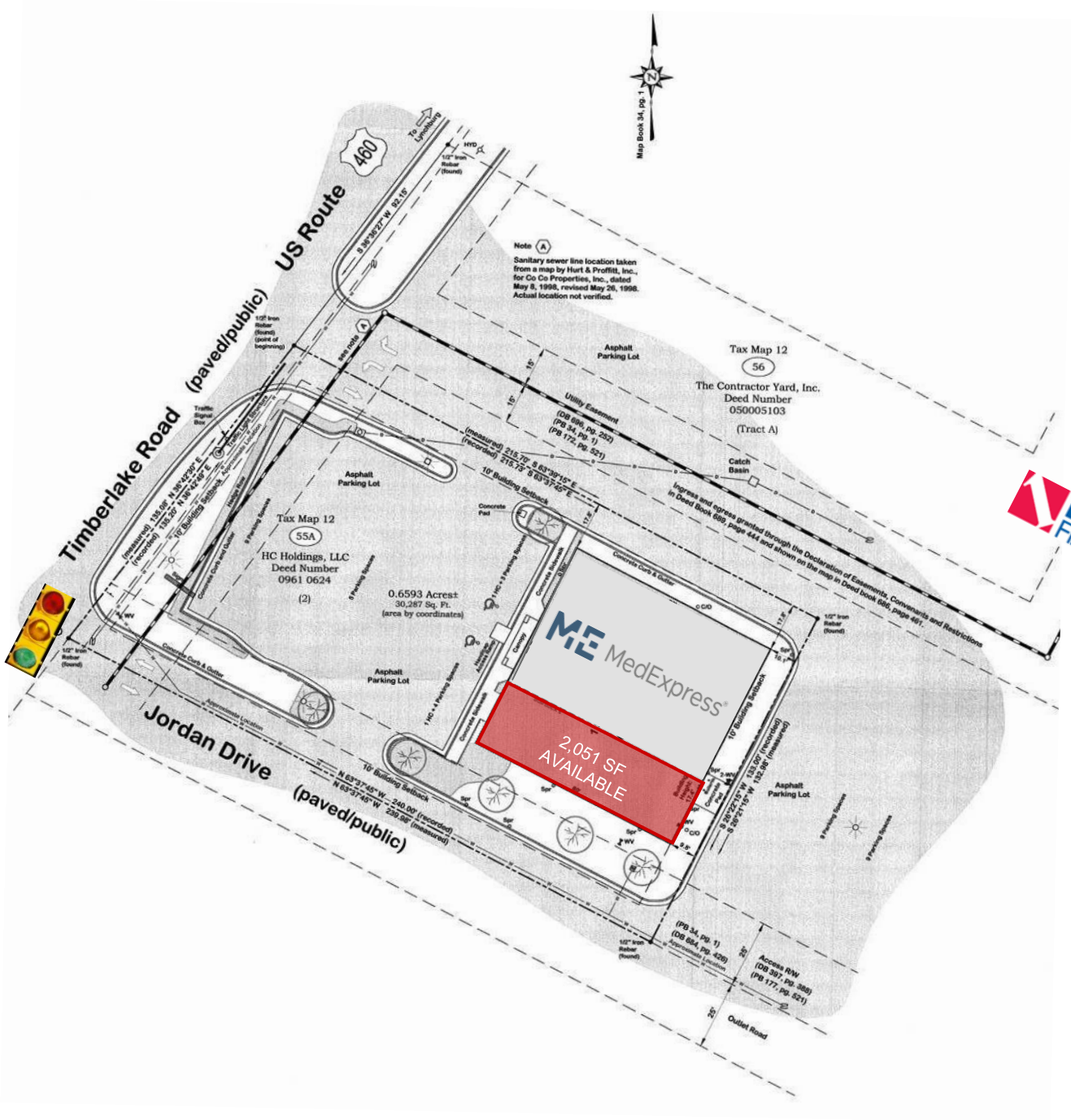
JOHN NIELSEN
 Senior Vice President
 540 767 3009
john.nielsen@thalhimer.com

CONNIE JORDAN NIELSEN
 Senior Vice President
 804 697 3569
connie.nielsen@thalhimer.com

310 First Street, Suite 300
 Roanoke, VA 24011
www.thalhimer.com

Independently Owned and Operated / A Member of the Cushman & Wakefield Alliance

Cushman & Wakefield | Thalhimer © 2015. No warranty or representation, express or implied, is made to the accuracy or completeness of the information contained herein, and same is submitted subject to errors, omissions, change of price, rental or other conditions, withdrawal without notice, and to any special listing conditions imposed by the property owner(s). As applicable, we make no representation as to the condition of the property (or properties) in question.

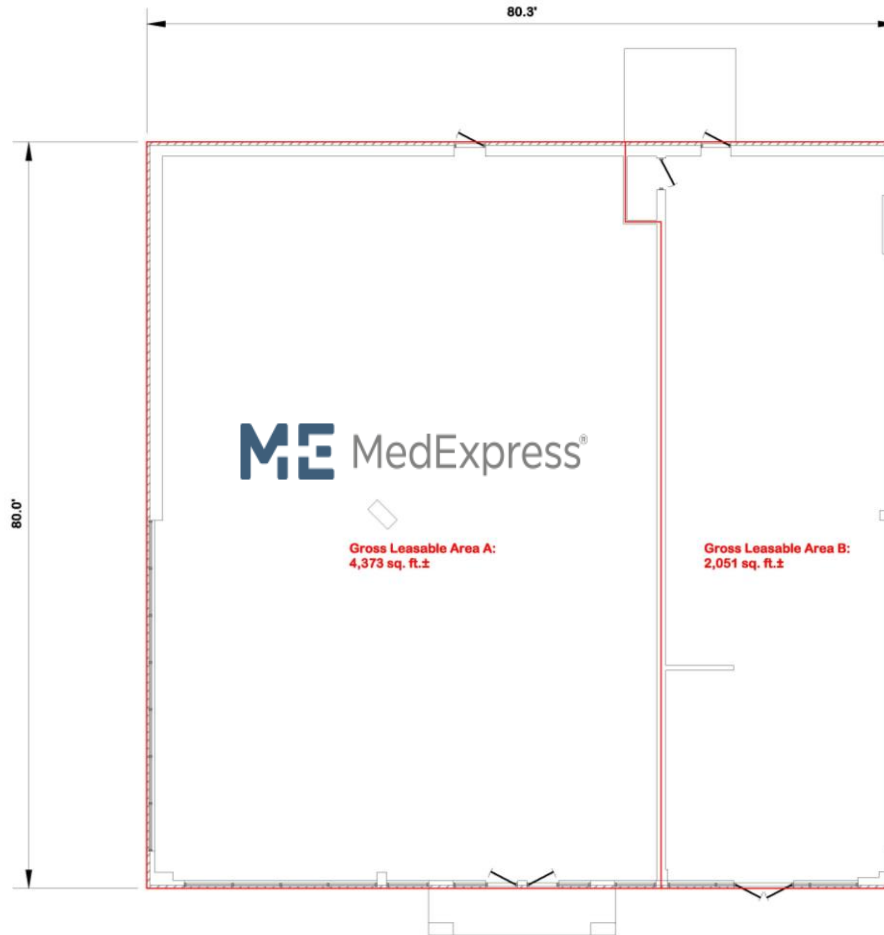


For more information, contact:

JOHN NIELSEN
 Senior Vice President
 540 767 3009
 john.nielsen@thalhimer.com

CONNIE JORDAN NIELSEN
 Senior Vice President
 804 697 3569
 connie.nielsen@thalhimer.com

310 First Street, Suite 300
 Roanoke, VA 24011
 www.thalhimer.com



**1-Story Masonry
Commercial Building**
Exterior Gross Area: 6,424 sq. ft.±



For more information, contact:

JOHN NIELSEN
Senior Vice President
540 767 3009
john.nielsen@thalhimer.com

CONNIE JORDAN NIELSEN
Senior Vice President
804 697 3569
connie.nielsen@thalhimer.com

310 First Street, Suite 300
Roanoke, VA 24011
www.thalhimer.com