

E. Covington Ave. & E. Primrose Ln. Post Falls, Idaho 83854

Property Features

- Lot A/Parcel # P63800020020: 63,118 SF ±
1.449 Acres Sale Price: \$892,093
- Lot B/Parcel # P63800020010: 57,368 SF ±
1.317 Acres Sale Price: \$774,468
- Owner Willing to Build-to-Suit
- Zoning: CCS Community Commercial Services
- Convenient to US 41 & I-90
- Excellent Medical Facilities Site
- Near Kootenai Health
- (A \$10,500,000 transition in progress)
- 2.2 Miles From Site (7 Minutes)



For More Information, Contact:

Stephen Pohl
Associate Broker

+1 509 622 3568
spohl@naiblack.com

ID Lic: #AB42233

Jon Jeffreys, SIOR

+1 509 622 3566
jjeffreys@naiblack.com



Rendering

Primrose Professional Center

US 41

BWA BERNARDO MILLS
 ARCHITECTS PC

to Kootenai Health Center

Spokane ← → Coeur d'Alene

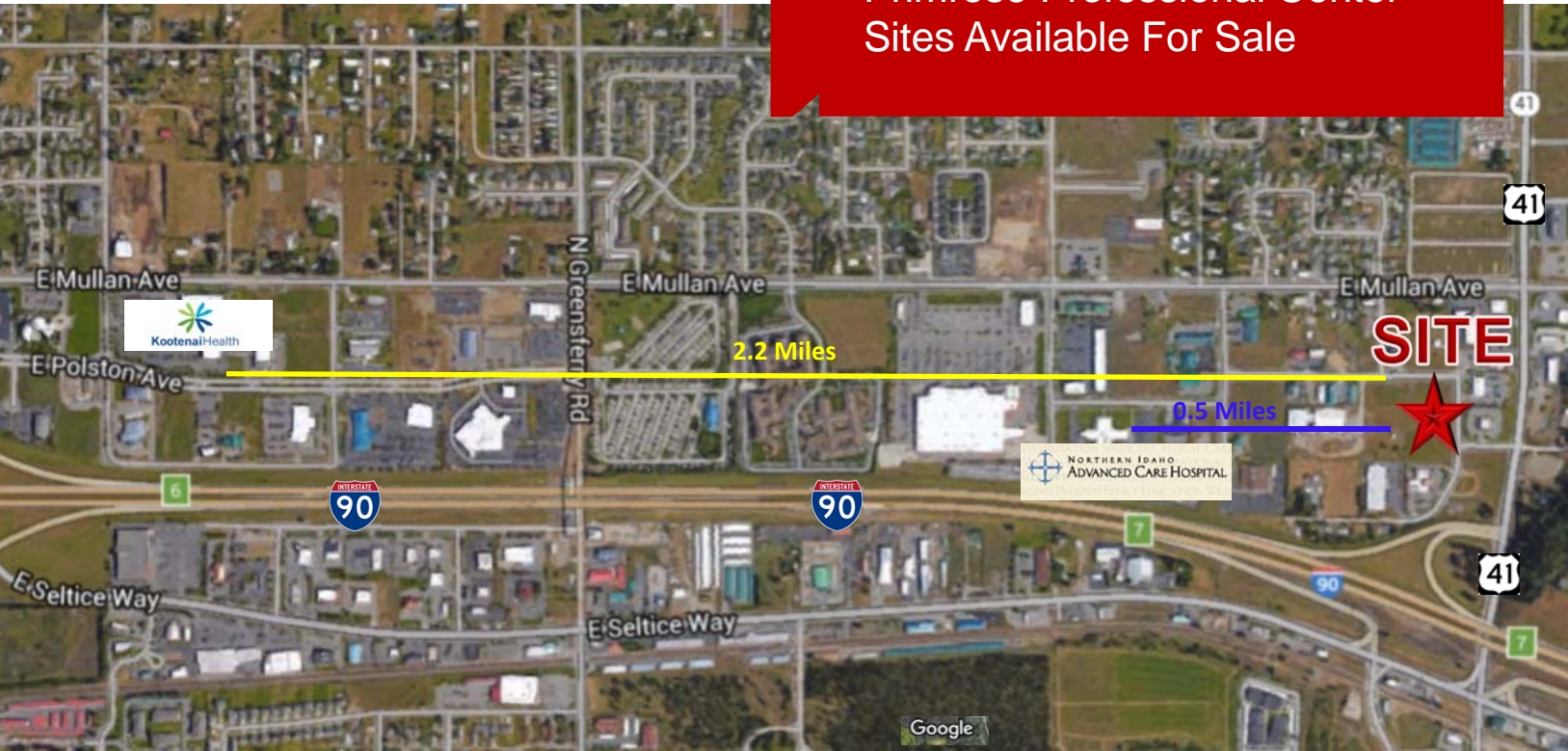
For More Information:

Stephen Pohl,
 Associate Broker

+1 509 622 3568
 spohl@naiblack.com

Jon Jeffreys, SIOR

+1 509 622 3566
 jjeffreys@naiblack.com



— Distance To Advanced Care Hospital
— Distance To Kootenai Health

2019 Demographics

Population	3 Mile Radius	36,651
	5 Mile Radius	76,315
	7 Mile Radius	131,898
Average Household Income	3 Mile Radius	\$74,954
	5 Mile Radius	\$74,555
	7 Mile Radius	\$73,671

For More Information:

Stephen Pohl,
 Associate Broker
 +1 509 622 3568
 spohl@naiblack.com

Jon Jeffreys, SIOR
 +1 509 622 3566
 jjeffreys@naiblack.com

