



THE PROSPECT
— EXECUTIVE SUITES —

2078 Prospector Avenue

Park City, Utah 84060

theprospectpc.com

david@theprospectpc.com | 435.602.1859



THE PROSPECT
— EXECUTIVE SUITES —

LOVE YOUR (work) LIFE.



The Prospect Gallery

Special thanks to our distinguished
artists and galleries currently exhibited
at The Prospect Gallery.

Galleries

JGO Gallery

jgogallerypc@gmail.com | 435.649.1006

Julie Nester Gallery

www.julienestergallery.com | 435.649.7855

Terzian Gallery

terziangalleries.com | 435.649.4927

Artists

Janet Beckman

Pamela Beverly-Quigley

Gypsy Mountain Skulls

Pat Lucas

Diana Ragsdale

Nealy Riley

Lisa Shine



About Us

It's all about loving your work-life
as much as your life-life.

As we began the design process for The Prospect,
our goal was to embrace not only the beauty of the
mountain aesthetic, but the artistry and casual-yet-classy atti-
tude of the Park City community as well. And doing so meant
looking beyond fixtures and features and actually considering
the environment surrounding the building as carefully as we
considered the environment inside of it. We're proud to be here
in Park City and we wanted to be certain that the Park City
feeling didn't stop at the front door.

Give us a call and we would be happy to give you a tour.

*For more information or to schedule a showing please contact
David James: david@theprospectpc.com | 435.602.1859*



THE PROSPECT
— EXECUTIVE SUITES —

Face it, with few exceptions, we all live and work in
Park City because we love the mountains. There's
no place like a mountain town, and specifically
there's no place like Park City. At The Prospect we
have embraced not only the beauty of the mountain
aesthetic, but the artistry and casual-yet-classy
attitude of the community as well. One of the main
reasons we all live in a place as inspiring as Park City
is because we're the kind of people who don't want to
spend our working hours in uninspiring office spaces.
Delivering on the promise of the ideal mountain town,
The Prospect is your mountain office.



Mountain View Penthouse Suite with views of Park City Mountain Ski Resort.

Executive Suites

Find the space that is right for you.

The Prospect Executive Suites offer a variety of offices to accommodate your business and budget. From our large Mountain View Penthouses to our Luxury Suites and Entrepreneurial Workstations you will find just the right space in an ideal location.

Entrepreneurial Workstations Starting Daily at \$75

Available for daily, weekly or monthly rental. Includes landline, locking cabinet, desk space, comfortable chair and amenities.



Four Entrepreneurial Workstations available short or long term.



THE PROSPECT EXECUTIVE SUITES

Our Community of Professionals

Ashleigh Bott, Psy.D.

Licensed Clinical Psychologist

Adam K. Fuller, Ph.D.

Clinical Psychologist
High Desert Psychology and Wellness

Patrick Lewis

Psychologist, PsyD

Mountain Sage

Natural Health and Acupuncture
www.mountainsagenaturalhealth.com

Elevage Partners

www.elevagepartners.com

Northwestern Mutual

www.nm.com

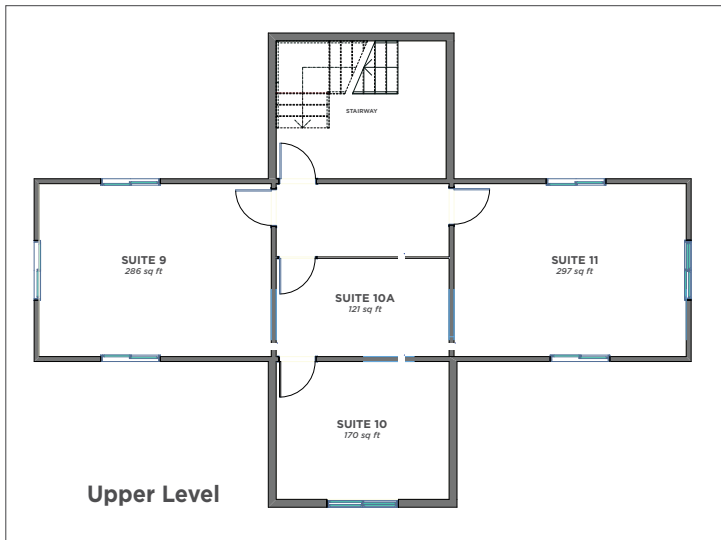
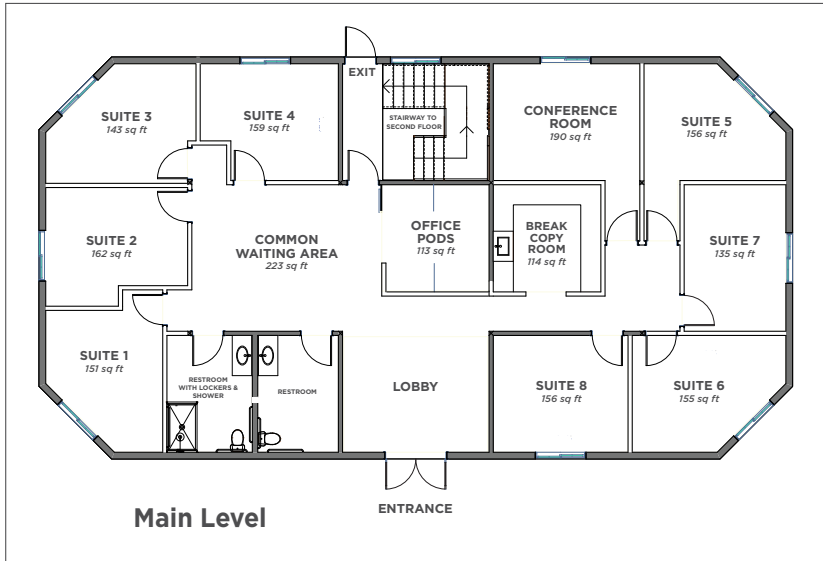
KPG Capital Group

kpgcapitalpartners.com

Silver Lode Development Company

Construction, Construction Management
and Retail Development

The Prospect Executive Suites | Floorplans



Luxury Suites
Starting Monthly
at \$1425

- Suite 1 151 square feet
- Suite 2 162 square feet
- Suite 3 143 square feet
- Suite 4 159 square feet
- Suite 5 156 square feet
- Suite 6 155 square feet
- Suite 7 135 square feet
- Suite 8 165 square feet

Spacious Mountain View Penthouse Suites
Starting Monthly
at \$2750

- Suite 9 286 square feet
- Suite 10 284 square feet
- Suite 11 297 square feet

For more information or to schedule a showing please contact
David James: david@theprospectpc.com | 435.602.1859



Amenities

Everything you want, everything you need, nothing overlooked.

The Prospect is Park City inside and out. Yet at the same time, the space has an exclusive and professional feel that perfectly embodies the spirit of the area. Add in the on-site shower, on-site parking right outside—all conveniently located on the Free Park City bus line and easy walking-distance to a variety of restaurants—and you'll see why The Prospect is the place to LOVE YOUR (work) LIFE.



Top left clockwise: Conference Room, Office Equipment, Kitchen and On-Site Locker Room and Showers

The Prospect Executive Suite Amenities

- Beautiful Fully Furnished Offices
- Well-Appointed Common Areas
- Kitchen with Coffee and Tea Bar
- Private Conference Room
- 1 Gig, Secure, High-Speed Wifi
- Shared Color Copier, Fax and Shredder
- Secure Building with 24-Hour Access
- On-Site Shower/Lockers
- Gated and Secure Underground Parking as well as Designated Surface Parking
- Located Near Park City Trails, Silver Mountain Sports Club and Main Street
- Community Minded Events and Art Exhibitions
- Located on the Free Park City Bus Line
- Walking Distance to Popular Local Restaurants