



12495 Airline Hwy

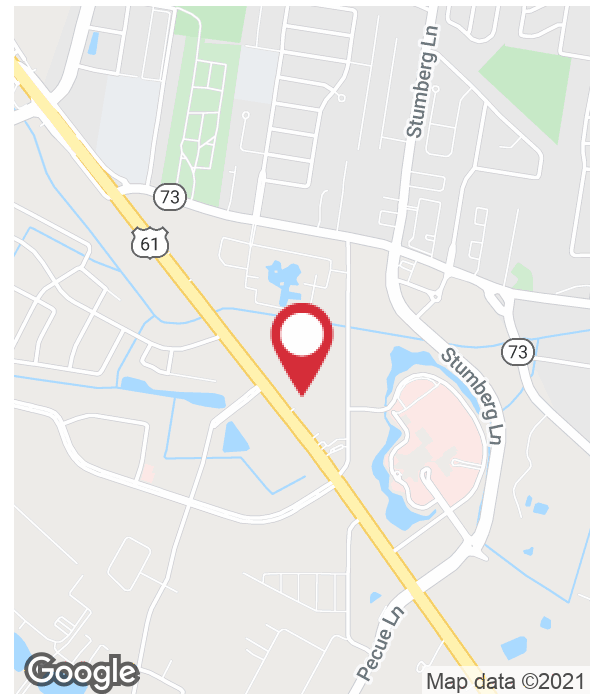
Baton Rouge, Louisiana 70817

Property Highlights

- Office- Warehouse Available For Lease
- One Truck Well, Two Roll Up Doors
- 3-Phase Power
- Direct Access to Airline Hwy
- Well-maintained Property, Built in 2007

Lease Rate

\$5,500.00 per month (NNN)



For more information

Walt Ketchings

O: 225 297 7705 | C: 225 241 3110
wketchings@latterblum.com

Erin Caballero, CCIM

O: 225 297 7868 | C: 225 241 6530
erinc@latterblum.com

CALL OR EMAIL FOR MORE INFORMATION

NO WARRANTY OR REPRESENTATION, EXPRESS OR IMPLIED, IS MADE AS TO THE ACCURACY OF THE INFORMATION CONTAINED HEREIN, AND THE SAME IS SUBMITTED SUBJECT TO ERRORS, OMISSIONS, CHANGE OF PRICE, RENTAL OR OTHER CONDITIONS, PRIOR SALE, LEASE OR FINANCING, OR WITHDRAWAL WITHOUT NOTICE, AND OF ANY SPECIAL LISTING CONDITIONS IMPOSED BY OUR PRINCIPALS NO WARRANTIES OR REPRESENTATIONS ARE MADE AS TO THE CONDITION OF THE PROPERTY OR ANY HAZARDS CONTAINED THEREIN ARE ANY TO BE IMPLIED. LICENSED IN LOUISIANA.

1700 City Farm Drive
Baton Rouge, LA 70806
225 295 0800 tel
latterblum.com

April 19, 2021



AVAILABLE SF: 10,240 SF

LEASE RATE/MONTH: \$5,500.00

LEASE RATE/SF: \$6.45/SF

LEASE TYPE: NNN

GRADE LEVEL
DOORS: 2

DRIVE-IN TRUCK
WELL: 1

YEAR BUILT: 2007

ZONING: C2

Property Overview

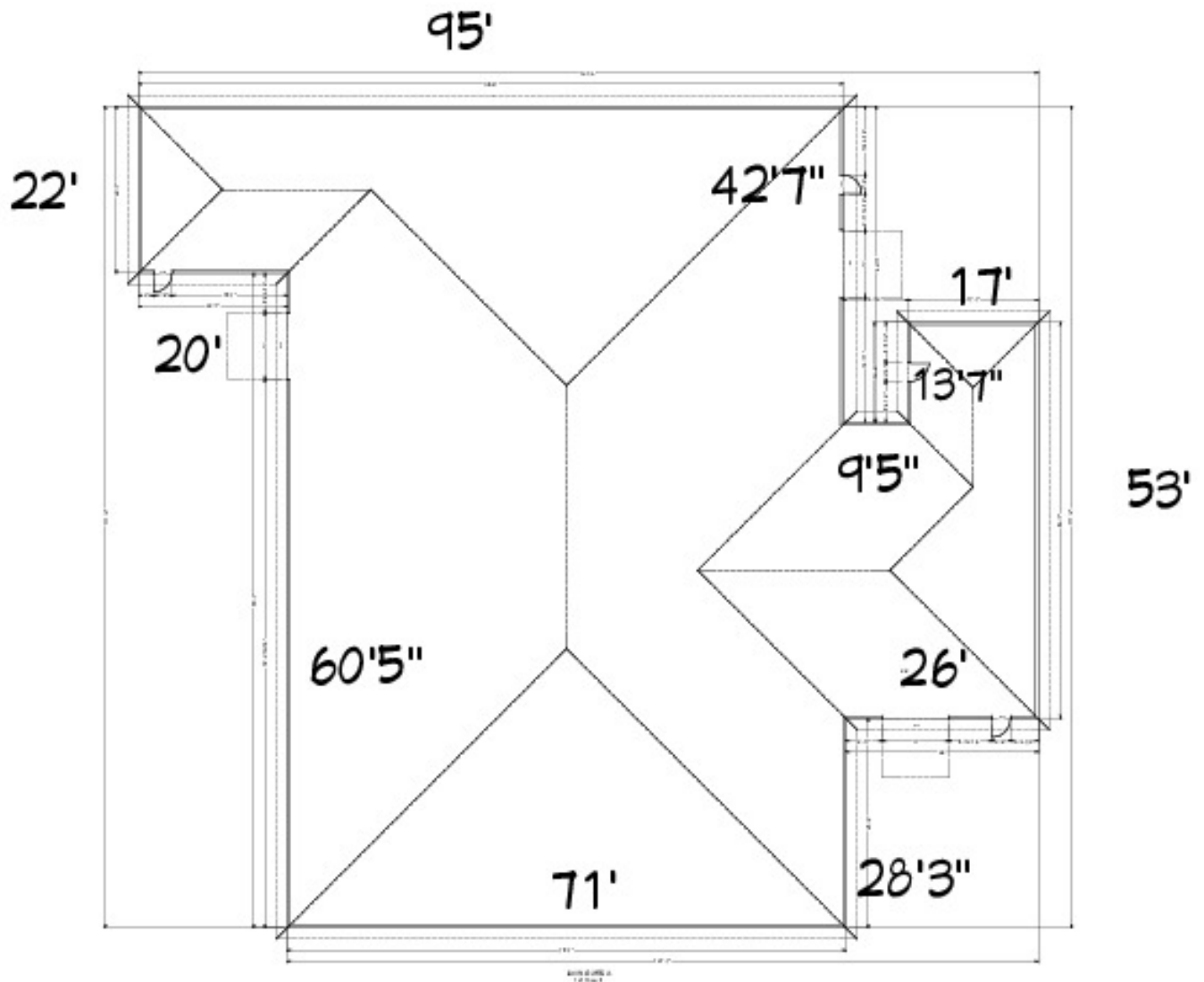
Office-Warehouse available for lease on Airline Hwy. Previously used at a valve manufacturing and distribution facility. The subject property is 3 buildings from Airline Hwy and has been occupied by one tenant since it was built in 2007. The office space is has 2-3 offices with two private restrooms. Warehouse includes two roll up doors, one truck well and 3 phase power. Additional upstairs office measuring approx. 11' x 11' 2"

Location Overview

The subject property is located on 2.36 Acre parcel with two other buildings. This property does not front Airline Hwy.

Additional Photos





Location Maps



1700 City Farm Drive
Baton Rouge, LA 70806
225 295 0800 tel
latterblum.com