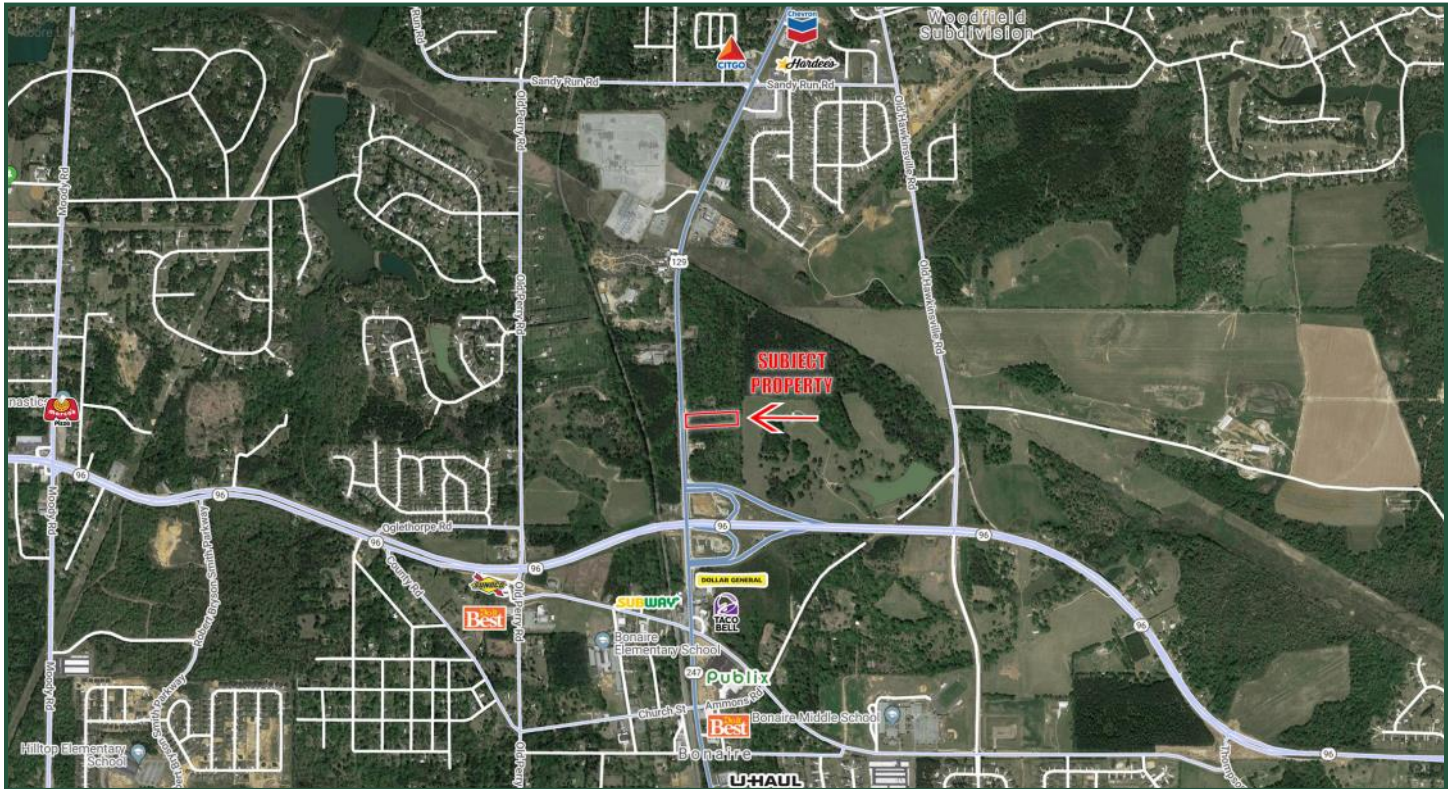


3.44 ACRES

Highway 247

Bonaire, Georgia 31005



LOT SIZE: 3.44 ACRES

ZONING: C-2

TRAFFIC: 15,300 vehicles per day Hwy 247

LOCATION: 205' of road frontage on Hwy 247 just North of the new Hwy 96 by-pass.

NOTES: Level topography. This is a rapidly growing area of Houston County. The new Publix at Merganser Commons is just South of the property.

~~Sales Price: \$700,000~~
REDUCED Price: \$599,000

DEMOGRAPHICS

2018	1 mile	3 mile	5 mile
Population	1,891	19,213	60,517
Avg. HH Income	\$100,763	\$90,430	\$75,816
Median Age	36.7	36.3	34.8

**FOR MORE
INFORMATION
CONTACT**

Chad W. Bevill

Cell: 478-954-2159
Main: 478-746-9421
cbevill@fickling.com

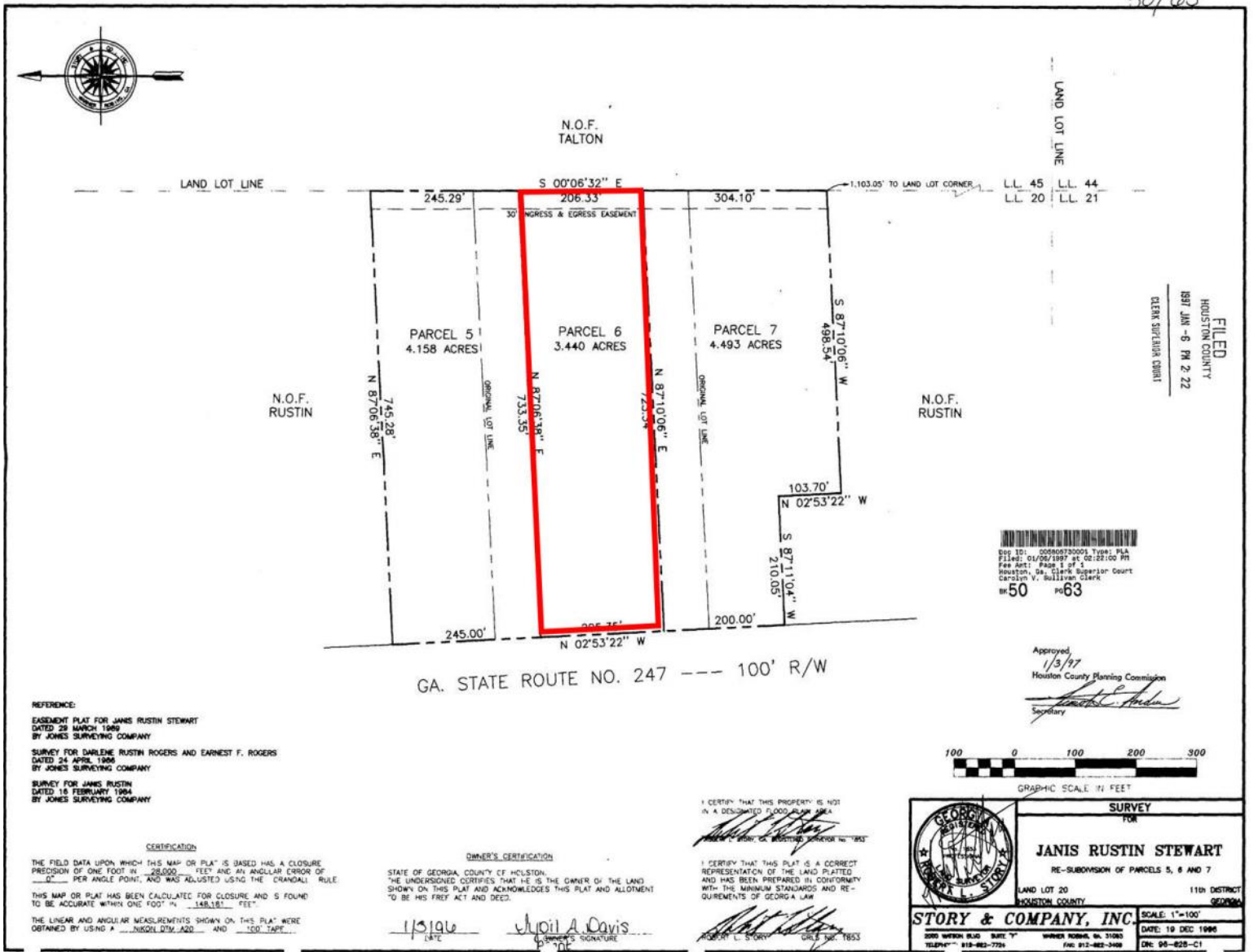
commercial.fickling.com

577 Mulberry St, Suite 1100 * P.O. Box 310 * Macon, GA 31202 | Phone (478) 746-9421 | Fax (478) 742-2015

This information is from resources deemed to be reliable, no warranties or guarantees for accuracy are made by Fickling and Company

3.44 ACRES
Highway 247
Bonaire, Georgia 31005

PLAT



**FOR MORE
 INFORMATION
 CONTACT**

Chad W. Bevill
 Cell: 478-954-2159
 Main: 478-746-9421
 cbevill@fickling.com

commercial.fickling.com