

8376 BEVERLY BLVD  
LOS ANGELES, CA 90048



COMMERCIAL  
ASSET GROUP

cag COMMERCIAL  
ASSET GROUP  
www.cag.com  
**For Lease**  
David Ickovic  
David Aschkenasy  
Jeremy Winkler  
**310.275.8222**

the detox ma

RARE RETAIL/FITNESS SPACE ON  
BEVERLY BLVD



## LEASE RATE

\$4.00 PSF, MG

## SPACE SIZE

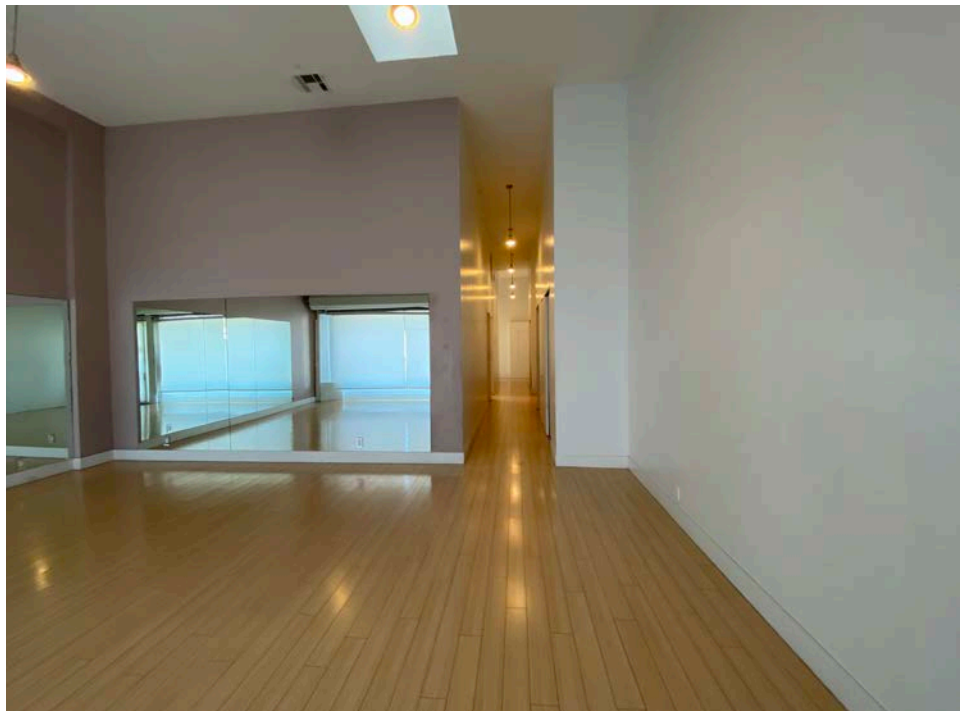
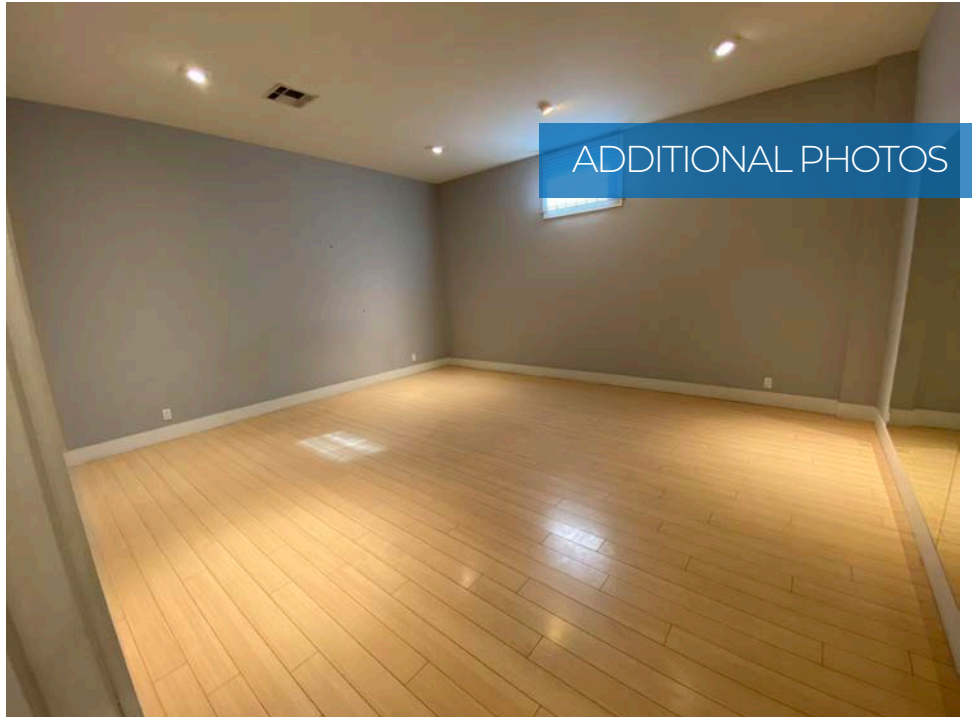
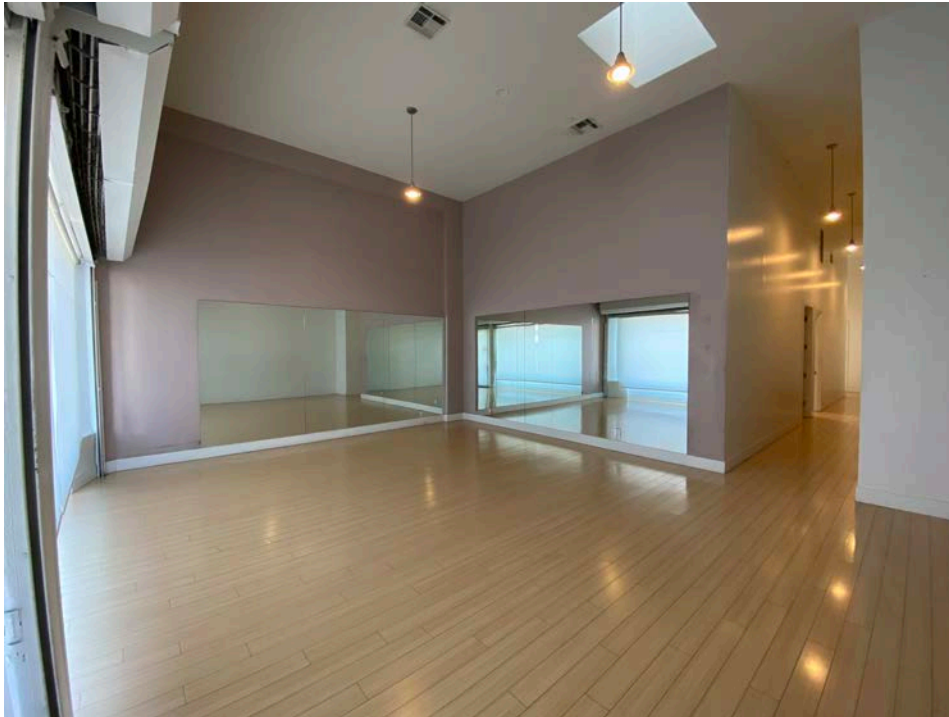
±1,800 SF

## AVAILABLE

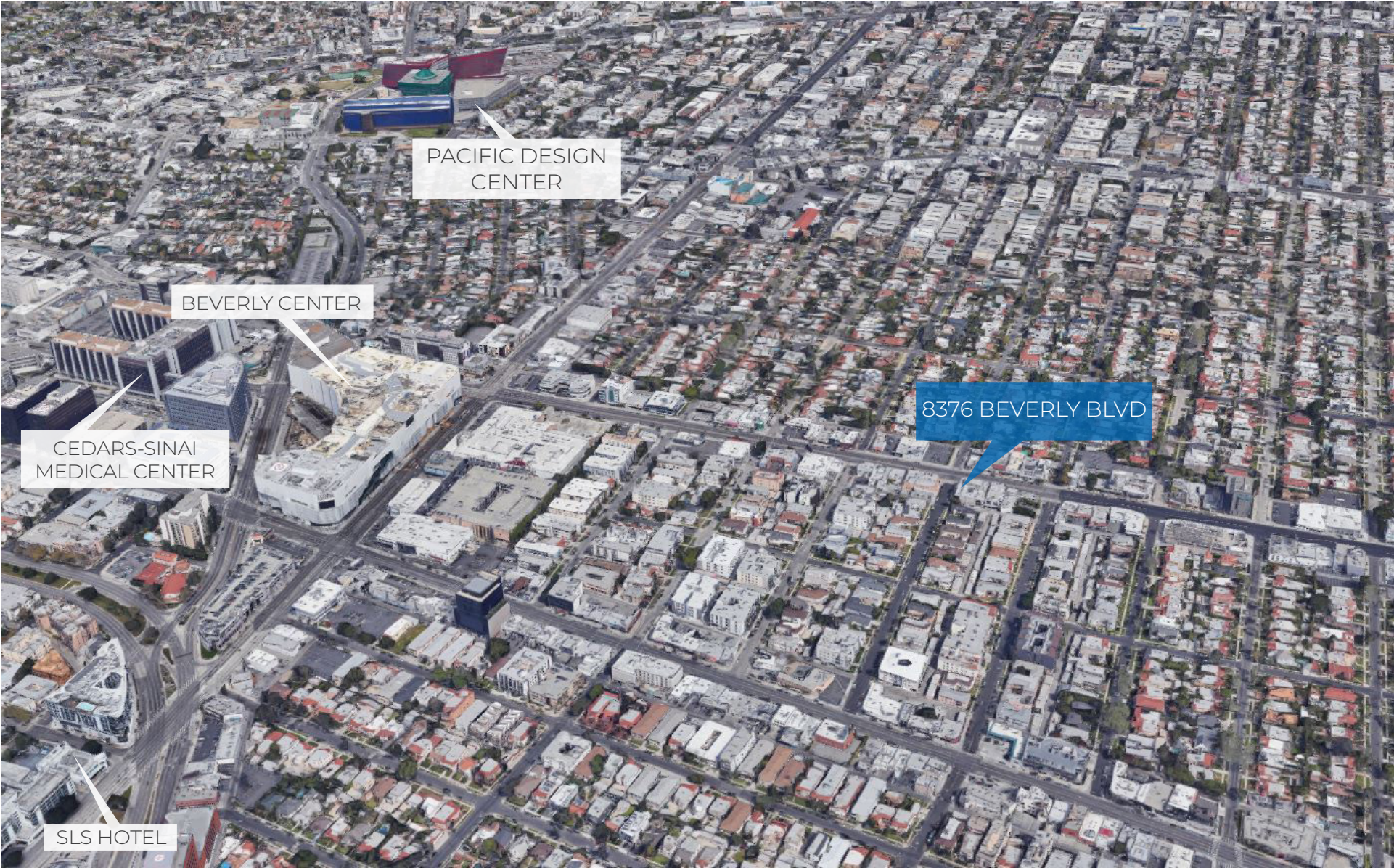
SPACE IS AVAILABLE IMMEDIATELY

- **FORMER FITNESS SPACE COMPRISING OF 3 SEPARATE EXERCISE ROOMS**
- **20+ FOOT CEILINGS AND HARDWOOD FLOORS THROUGHOUT**
- **LOCATED IN THE HEART OF BEVERLY GROVE WITH MULTI-MILLION DOLLAR HOMES AND HIGH PRICED APARTMENTS SURROUNDING THE BUILDING**
- **BLOCKS FROM THE GROVE, BEVERLY CENTER AND BEVERLY CONNECTION**

These materials are based on information and content provided by others, which we believe are accurate. No guarantee, warranty or representation is made by Commercial Asset Group, Inc. or its personnel. All interested parties must independently verify accuracy and completeness. As well, any projections, assumptions, opinion, or estimates are used for example only and do not represent the current or future performance of the identified property. Your tax, financial, legal and toxic substance advisors should conduct a careful investigation of the property and its suitability for your needs, including land use limitations. The property is subject to prior lease, sale, change in price, or withdrawal from the market without notice.



# AERIAL



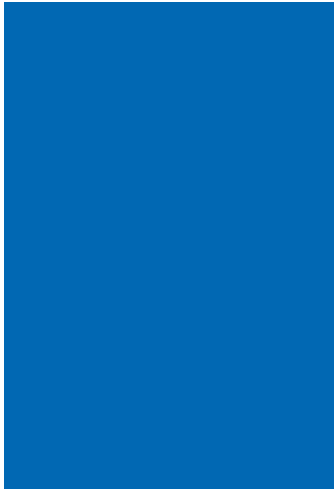
PACIFIC DESIGN CENTER

BEVERLY CENTER

CEDARS-SINAI MEDICAL CENTER

SLS HOTEL

8376 BEVERLY BLVD



# DEMOGRAPHICS

TOTAL POPULATION

1 MILE: 41,270

3 MILE: 300,490

5 MILE: 910,381

AVERAGE HOUSEHOLD INCOME

1 MILE: \$94,552

3 MILE: \$83,222

5 MILE: \$65,651

MEDIAN AGE

1 MILE: 41.20

3 MILE: 40.30

5 MILE: 38.90

WALK SCORE

90



COMMERCIAL  
ASSET GROUP



cag COMMERCIAL ASSET GROUP  
[www.cag-re.com](http://www.cag-re.com)  
**For Lease**  
David Jekovics  
David Aschkenasy  
Jeremy Wintner  
310.275.8222

**DAVID ASCHKENASY**  
EXECUTIVE VICE PRESIDENT  
P 310.272.7381  
E [DAVIDA@CAG-RE.COM](mailto:DAVIDA@CAG-RE.COM)  
LIC. 01714442

**JEREMY WINTNER**  
DIRECTOR  
P 310.272.7390  
E [JEREMY@CAG-RE.COM](mailto:JEREMY@CAG-RE.COM)  
LIC. 02062054

**COMMERCIAL ASSET GROUP**  
1801 CENTURY PARK EAST, STE 1550  
LOS ANGELES, CA 90067  
P 310.275.8222 F 818.385.1470  
[WWW.CAG-RE.COM](http://WWW.CAG-RE.COM) LIC. 01876070