

East Park Danielson Building

4510 B St NW, #A
Auburn, WA

25,610 SF with 4,000 SF
of office

4,000 SF of bonus
mezzanine storage

24' clear height

7 dock-high

3 grade-level doors

\$0.58 / \$0.85, NNN

Immediate access to SR-167
and I-5 via 277th

Drive through capability with GL
doors in the rear and unopposed
dock doors

End cap space with
excellent parking

Available January 1, 2018



Location



Contact

Thad Mallory, SIOR

206.248.7338

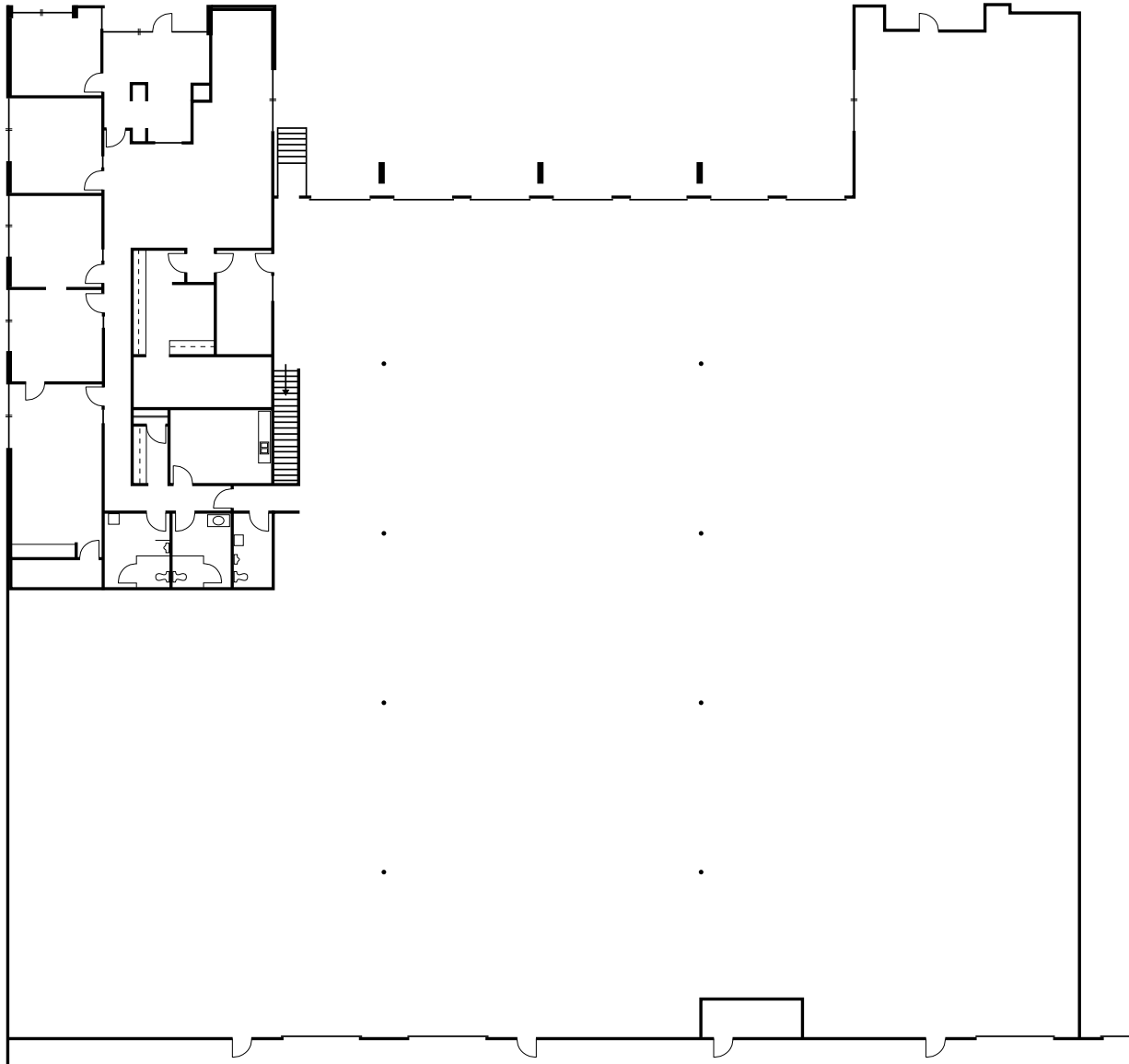
tmallory@kiddermathews.com

Travis Stanaway

206.248.6526

traviss@kiddermathews.com

East Park Danielson Building



Contact

Thad Mallory, SIOR
206.248.7338
tmallory@kiddermathews.com

Travis Stanaway
206.248.6526
traviss@kiddermathews.com