



# Treasure & Associates

## COMMERCIAL REAL ESTATE

Brokerage | Tenant Representation | Consultation | Development

FOR SALE

## NW of SR 37 & SR 36

Sunbury, OH 43074

20.4 +/- Acres zoned PCD. \$140,000 per acre for entire 20.4 +/- Acres. Owner will split parcel. Price per acre to be negotiated when not purchasing the entire 20.4 acres.

For More Information, call

**(614) 289-8777**

- \$2,856,000 for full parcel
- Zoned PCD
- All utilities
- Approximately 30,000 cars per day
- Ideal for mixed-use development

Tim Treasure, Principal, SIOR  
1733 W. Third Ave.  
Columbus, OH 43212  
TTreasure@treasureandassociates.com

The information contained herein has been obtained from the property owner or other sources that we deem reliable. Although we have no reason to doubt its accuracy, no representation or warranty is made regarding the information. The property is offered "as is". The submission may be modified or withdrawn at any time by the property owner.



# NW of SR 37 & SR 36

Sunbury, OH 43074



Tim Treasure, Principal, SIOR  
1733 W. Third Ave.  
Columbus, OH 43212  
TTreasure@treasureandassociates.com



# NW of SR 37 & SR 36

Sunbury, OH 43074

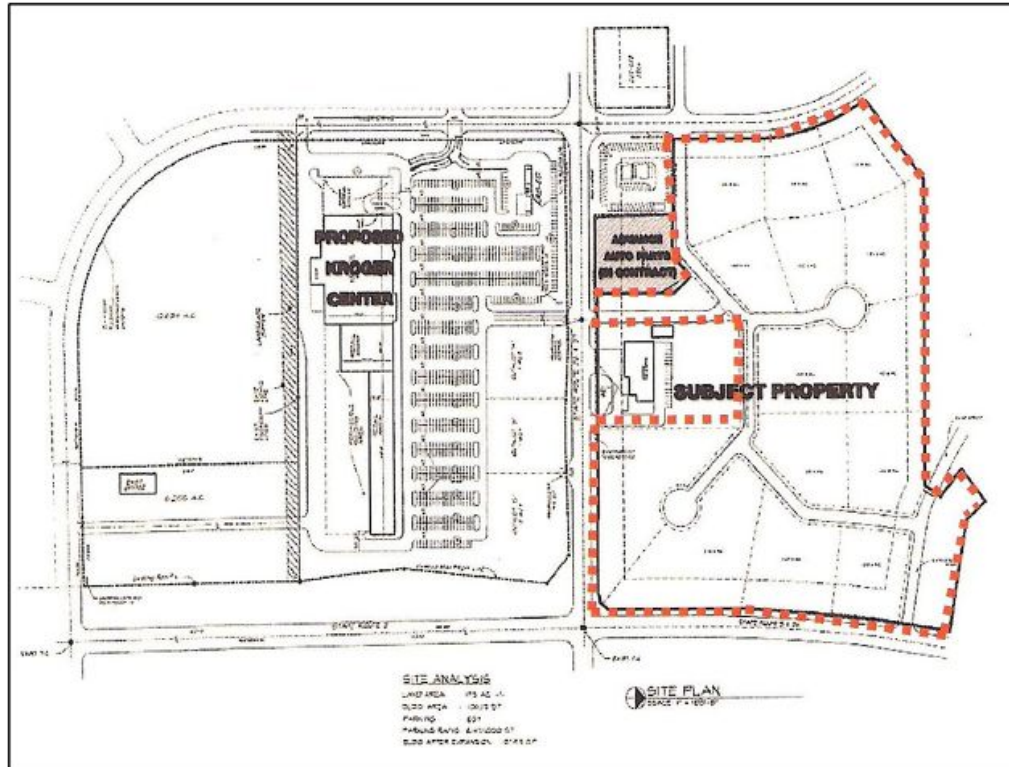


Tim Treasure, Principal, SIOR  
 1733 W. Third Ave.  
 Columbus, OH 43212  
 TTreasure@treasureandassociates.com



# NW of SR 37 & SR 36

Sunbury, OH 43074



Tim Treasure, P  
1733 W. Third Ave.  
Columbus, OH 43212  
TTreasure@treasureandassociates.com



# NW of SR 37 & SR 36

Sunbury, OH 43074



Tim Treasure, Principal, SIOR  
1733 W. Third Ave.  
Columbus, OH 43212  
TTreasure@treasureandassociates.com



Treasure & Associates

COMMERCIAL REAL ESTATE

Brokerage | Tenant Representation | Consultation | Development

# Tim Treasure

## Biography



Tim has over twenty years of specialized tenant and landlord representation for Class A and Class B office buildings in Central Ohio (Columbus, Ohio MSA). Tim began his commercial real estate career in July 1994, with a primary focus in office leasing and investment sales. In only his second year, Tim was awarded the prestigious “Rookie of the Year” award which is given annually by the Columbus Board of Realtors Commercial Investments Section for transactions totaling over \$9,000,000. To date, Tim has leased (and/or sold) commercial real estate transactions totaling over \$100,000,000. In 2006, Tim was awarded the SIOR designation and membership into the National Society of Industrial and Office Realtors. This designation is awarded to approximately ten (10) percent of the industry. Tim has negotiated multiple transactions on behalf of Johnson Controls, Inc., McDonald’s Corporation, Pitney Bowes, Inc., Batelle Pulmonary Therapeutics, Inc. Norman Jones Enlow and Co., Advanced Data Processing Inc., Dismas Distribution, Libertas Wealth Management, Columbus First Bank, Baez Azimuth Ltd., Miller 3 & 37 LLC, Vertical Adventures, Creative Palette, Appian Manufacturing, Eye Columbus LLC, Your Pie, and The Shepard Law Firm.

Tim is a certified member of SIOR (Society of Industrial and Office Realtors) which is a worldwide organization specializing in membership for highly successful commercial real estate salespersons, brokers and developers. Formerly, Tim was a nine year member of the City of Grandview Heights, OH board of zoning appeals and former board member of the Recognition Committee and Chairperson of the Education Committee at the Columbus Board of Realtors. In addition Tim served two consecutive terms as vestry member of Trinity Episcopal Church in Columbus, OH. Tim was chairperson for both terms for the stewardship program and was responsible for securing pledges for the church.

Personally, Tim is happily married to wife, Anne for more than thirty years and is proud to be the father of four children. Anne and Tim reside in Grandview Heights, Ohio.

### Specialties

- Sale - Industrial
- Sale - Land
- Sale - Multifamily/Apartment
- Sale - Office
- Lease - Industrial
- Lease - Miscellaneous
- Lease - Office
- Lease - Retail
- Lease - Tenant Representation

Tim Treasure, Principal, SIOR

1733 W. Third Ave.

Columbus, OH 43212

[TTreasure@treasureandassociates.com](mailto:TTreasure@treasureandassociates.com)