

FOR SALE ±13,136

**27031 Vista Terrace
Lake Forest, CA 92630**

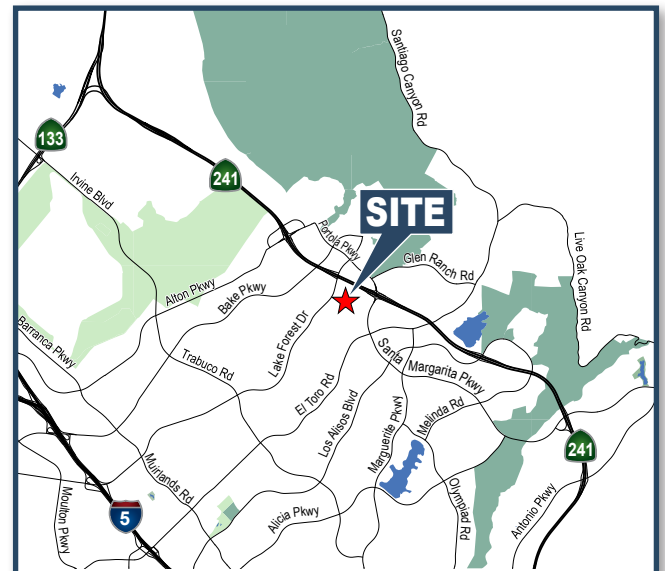
Voit
REAL ESTATE SERVICES



RENOVATIONS COMPLETE

Features

- ±13,136 Square Foot Building
- ±10,000 Square Feet of Creative Office Space
- 2-Story Lobby Entry
- Extensive Natural Light
- 3:1 Parking Ratio
- Large Fenceable Yard Area
- 2 Ground Level Loading Doors
- Private Outdoor Patio / Lunch Area
- Dual Entry Points, Drive Around Facility
- ±22' Clear Height
- ±400 Amps
- Excellent 5, 405 and 241 Freeway Access

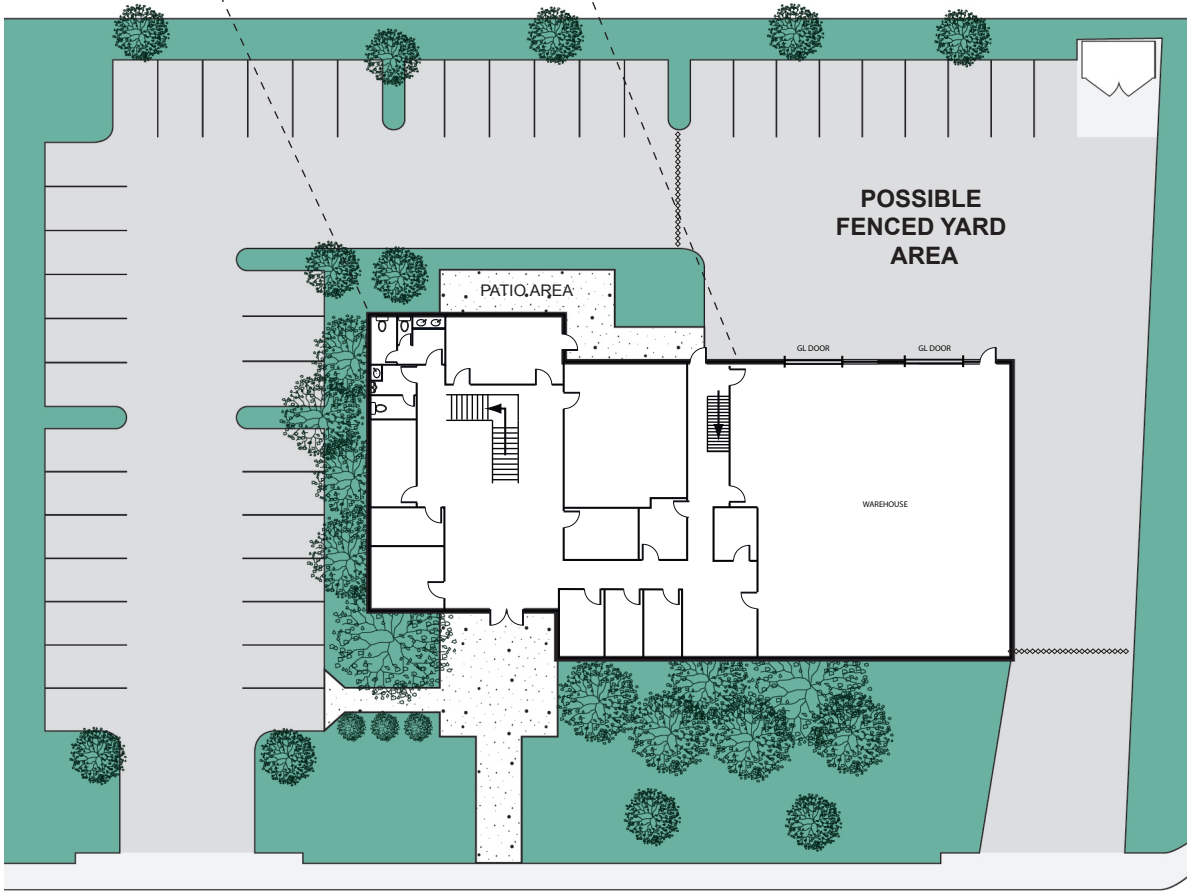
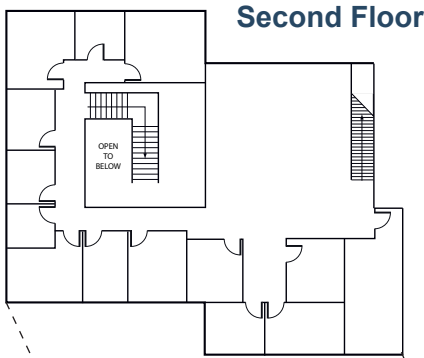


Skyler Serrano
Senior Associate
Lic #01790959
949.263.5302
sserrano@voitco.com

Joe Winkelmann
Senior Vice President
Lic #01259378
949.263.5394
jwinkelmann@voitco.com

FOR SALE - ±13,136 SF

**27031 Vista Terrace
Lake Forest, CA 92630**



VISTA TERRACE

Skyler Serrano
Senior Associate
Lic #01790959
949.263.5302
sserrano@voitco.com

Joe Winkelmann
Senior Vice President
Lic #01259378
949.263.5394
jwinkelmann@voitco.com

Voit
REAL ESTATE SERVICES

2020 Main Street, Suite 100, Irvine, CA 92614 • 949.851.5100 • 949.261.9092 Fax • Lic #01333376 | www.voitco.com



The information contained herein has been obtained from sources we deem reliable. While we have no reason to doubt its accuracy, we do not guarantee it. ©2014 Voit Real Estate Services, Inc. All Rights Reserved. Real People. Real Solutions.® is a registered trademark of Voit Real Estate Services.



Skyler Serrano
 Senior Associate
 Lic #01790959
 949.263.5302
 sserrano@voitco.com

Joe Winkelmann
 Senior Vice President
 Lic #01259378
 949.263.5394
 jwinkelmann@voitco.com

Voit
 REAL ESTATE SERVICES

2020 Main Street, Suite 100, Irvine, CA 92614 • 949.851.5100 • 949.261.9092 Fax • Lic #01333376 | www.voitco.com