



2328 Ingleside Avenue
Macon, Bibb County, Georgia 31204

LEASE



STOREFRONT RETAIL / OFFICE

1,600± SF

LEASE RATE: \$900 PER MONTH, GROSS

CBCMACON.COM

MIKI FOLSOM, CCIM
478.746.8171 OFFICE • 478.361.3036 CELL
mfolsom@cbcworldwide.com

 **COLDWELL
BANKER
COMMERCIAL**
EBERHARDT & BARRY

CBCMACON.COM

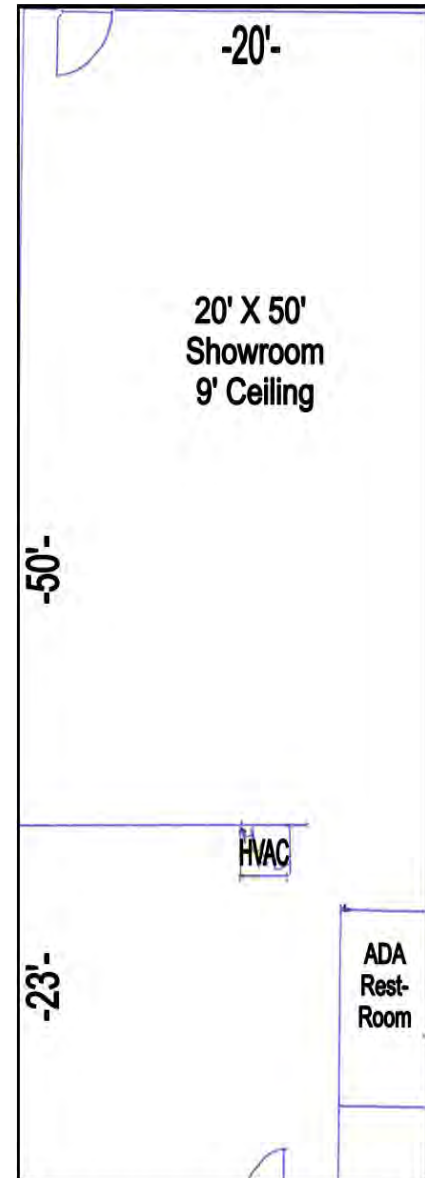
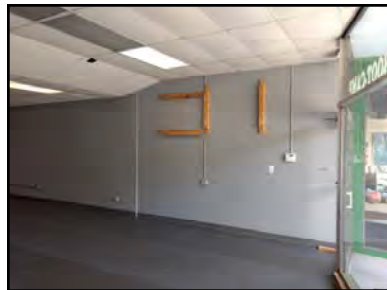


PROPERTY OVERVIEW

2328 Ingleside Avenue
Macon, Bibb County, Georgia 31204

- Located in Ingleside Village
- Formerly Train by Cain Studio
- 1,600± SF Storefront Retail / Office Space
 - 20' X 80' Showroom
 - Custom counter & office
- Zoned C1

**LEASE RATE:
\$900 PER MONTH, GROSS**

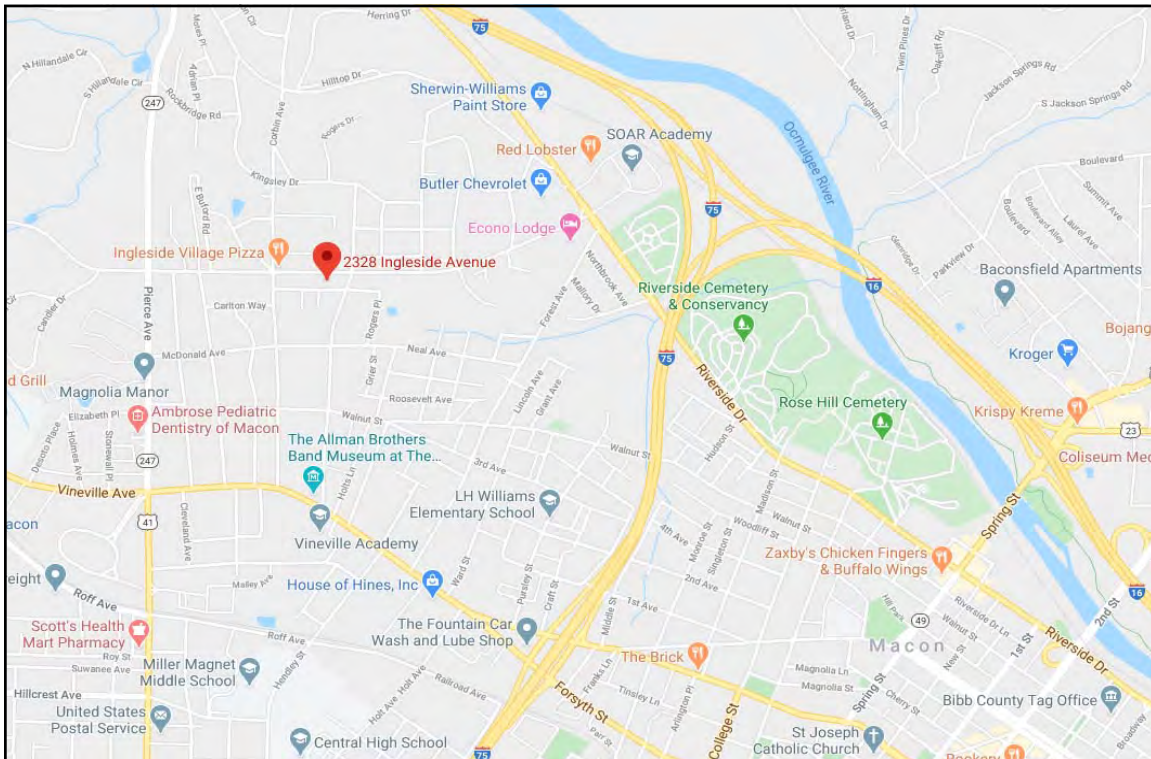
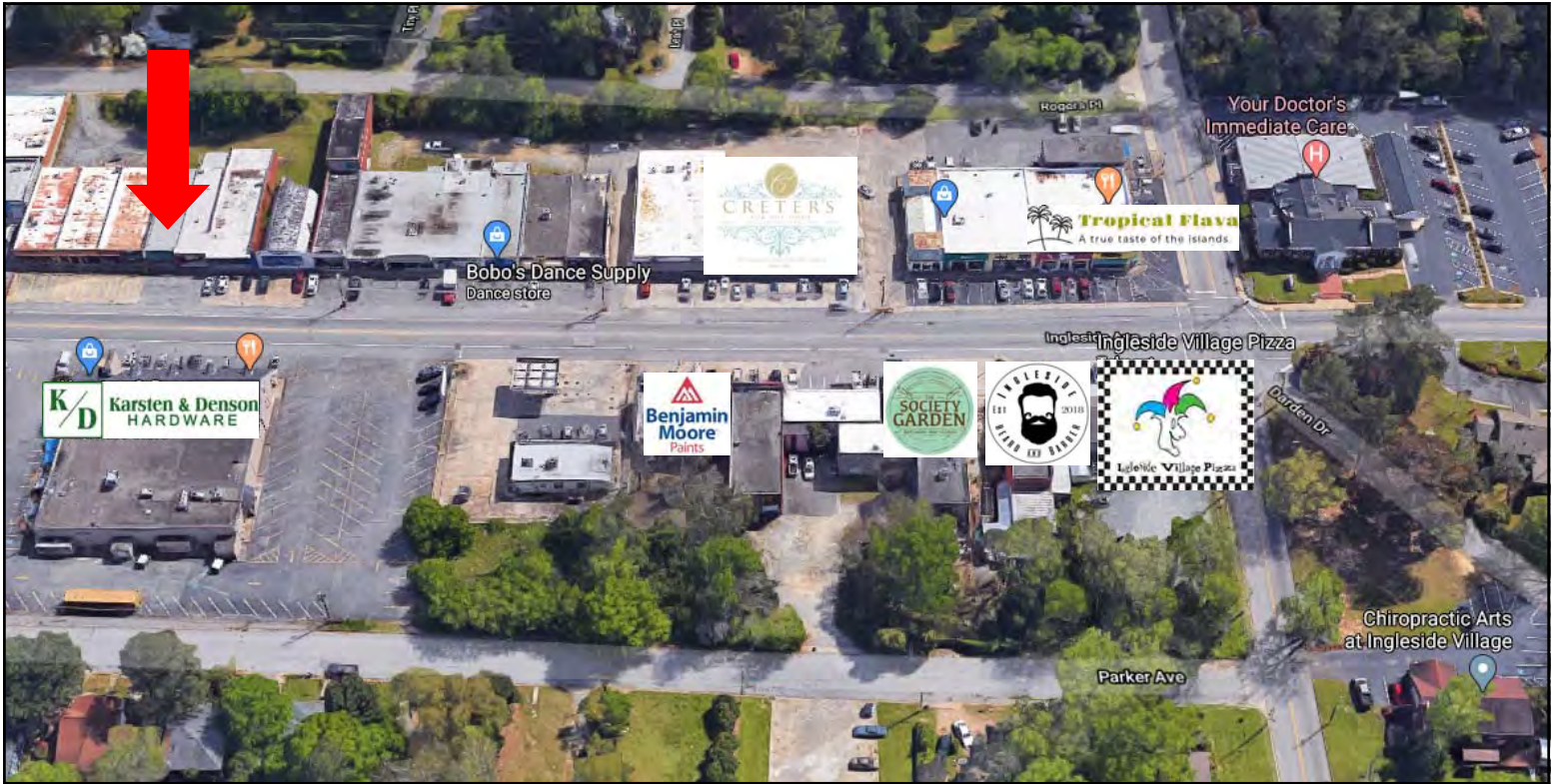


Measurements are approximate.



MAPS

2328 Ingleside Avenue
Macon, Bibb County, Georgia 31204



MIKI FOLSOM, CCIM

478.746.8171 OFFICE • 478.361.3036 CELL

mfolsom@cbcworldwide.com

COLDWELL BANKER COMMERCIAL EBERHARDT & BARRY 990 Riverside Drive Macon, GA 31201 (478) 746-8171



DEMOGRAPHICS - BIBB COUNTY

2328 Ingleside Avenue
Macon, Bibb County, Georgia 31204

KEY FACTS

156,171

Population



2.5

Average Household Size

37.2

Median Age

\$40,970

Median Household Income

EDUCATION

13%

No High School Diploma



31%
High School Graduate



28%
Some College



28%
Bachelor's/Grad/Prof Degree

BUSINESS



6,494

Total Businesses



87,592

Total Employees

EMPLOYMENT



White Collar

65%



Blue Collar

18%



Services

16%

16.1%

Unemployment Rate

INCOME



\$40,970

Median Household Income



\$24,379

Per Capita Income



\$24,540

Median Net Worth

Households By Income

The largest group: <\$15,000 (19.3%)

The smallest group: \$150,000 - \$199,999 (3.3%)

Indicator ▲	Value	Difference	
<\$15,000	19.3%	+8.5%	<div style="width: 19.3%;"></div>
\$15,000 - \$24,999	12.8%	+3.6%	<div style="width: 12.8%;"></div>
\$25,000 - \$34,999	11.7%	+2.4%	<div style="width: 11.7%;"></div>
\$35,000 - \$49,999	13.0%	+0.3%	<div style="width: 13.0%;"></div>
\$50,000 - \$74,999	14.8%	-2.9%	<div style="width: 14.8%;"></div>
\$75,000 - \$99,999	12.2%	-0.3%	<div style="width: 12.2%;"></div>
\$100,000 - \$149,999	9.1%	-5.5%	<div style="width: 9.1%;"></div>
\$150,000 - \$199,999	3.3%	-2.9%	<div style="width: 3.3%;"></div>
\$200,000+	3.8%	-3.3%	<div style="width: 3.8%;"></div>