



*950 Route 46
Roxbury Township, New Jersey*

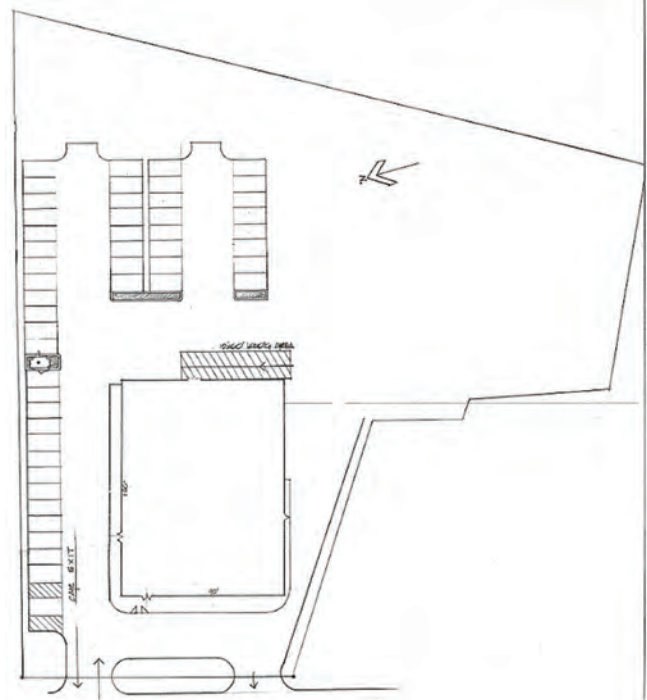
FOR LEASE

PROPERTY SPECS:

SF Available: 10,800 SF
Office SF: To suit
Taxes: \$2.07 PSF
Asking Price: \$14.00/PSF NNN
Land Area: 2.3 Acres
Column Spacing: Clear span (90' x 120')
Car Parking: 48 spaces
Dock Doors: 1 Tailgate
Zoning: B-2 (permits retail, office, daycare, banking)
Traffic Count: 42,349
Demographics: (2017 Estimate)

	1 mile	3 mile	5 mile
Population	2,173	37,518	94,091
Number of HH	753	14,277	35,125
Avg HH income	\$145,636	\$112,802	\$113,538

Comments: Building to undergo renovation to include new parking lot, HVAC, bathrooms and windows. Exterior to be upgraded.



For more information, please contact:

Brian Wilson
bwilson@resource-realty.com

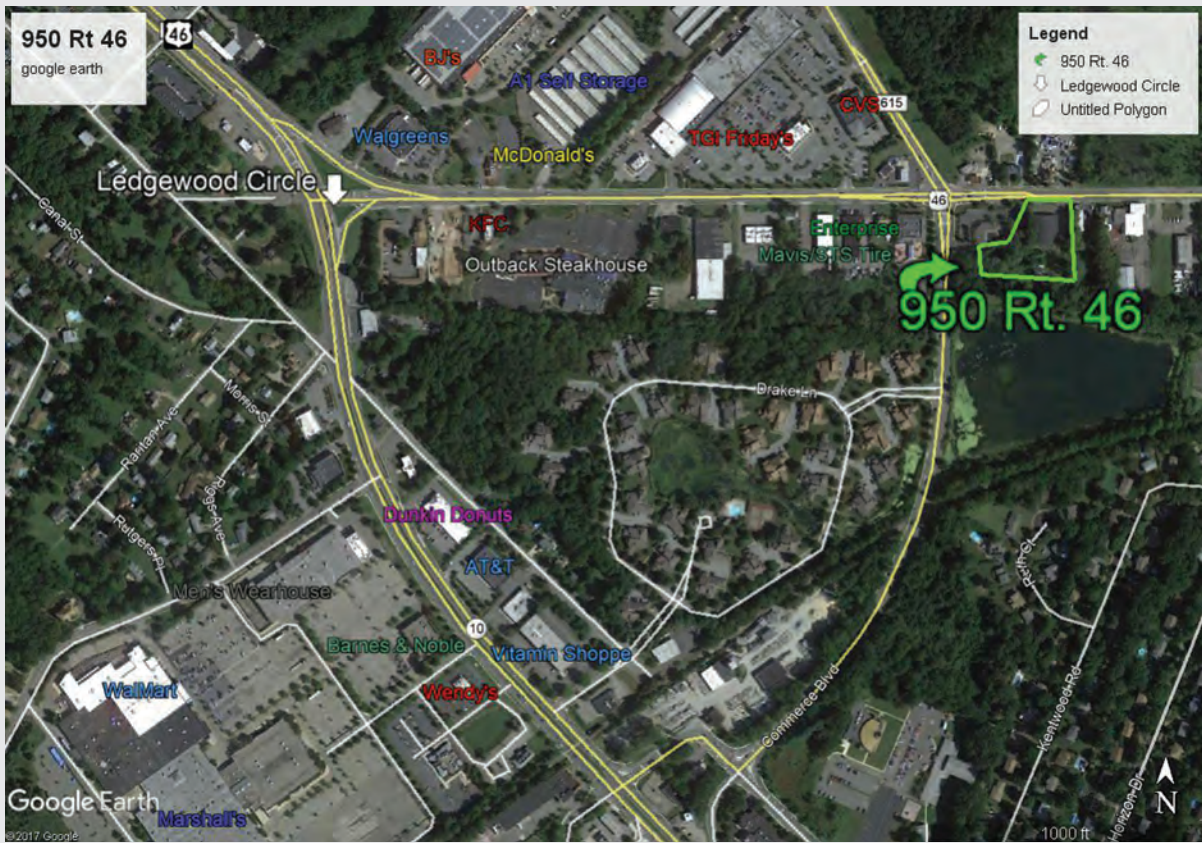
Scott Peck, SIOR
speck@resource-realty.com

Exclusive Leasing Agent:



www.resource-realty.com

973-299-0900



All information furnished is from sources deemed reliable. No representation is made as to the accuracy thereof and it is submitted subject to error, omission, change of price, prior sale or lease and withdrawal without notice. Any commission due cooperating brokers is subject to all of the terms and conditions upon which we and our clients have agreed.

Exclusive Leasing Agent:



973-299-0900
 www.resource-realty.com