

244 Westchester Avenue

White Plains, NY



Medical Office for Lease

As exclusive agents, we are pleased to offer the following space for lease:

Partial 1st Floor

Area: 2,089 RSF - 2,150 RSF

Rental Rate: \$36.00/RSF

Possession: Immediate

Term: Negotiable

Partial 2nd Floor

Area: 3,115 RSF - 3,777 RSF

Rental Rate: \$36.00/RSF

Possession: Immediate

Term: Negotiable

Partial 3rd Floor

Area: 1,545 RSF

Rental Rate: \$36.00/RSF

Possession: Immediate

Term: Negotiable

- ◆ On-site property management
- ◆ Newly renovated lobby and common areas
- ◆ Immediate access to I-287, I-95 and the Hutchinson River Parkway
- ◆ Minutes away from downtown White Plains and White Plains Hospital
- ◆ On-site cafeteria
- ◆ Banking within the complex
- ◆ Abundant surface parking
- ◆ MRI facility located in the building
- ◆ Owned by Healthcare Trust of America, Inc. (NYSE:HTA), a nationally owned, publicly traded real estate investment trust, is a fully integrated, leading owner of medical office buildings.

Glenn P. Walsh Executive Managing Director **914.881.1096** gwalsh@ngkf.com

Lawrence A. Ruggieri Senior Managing Director **914.881.1025** lruggieri@ngkf.com

Ross Armstrong Associate **914.881.1518** rarmstrong@ngkf.com

Leased By:



Owned & Managed By:



800 Westchester Avenue
Rye Brook, NY 10573

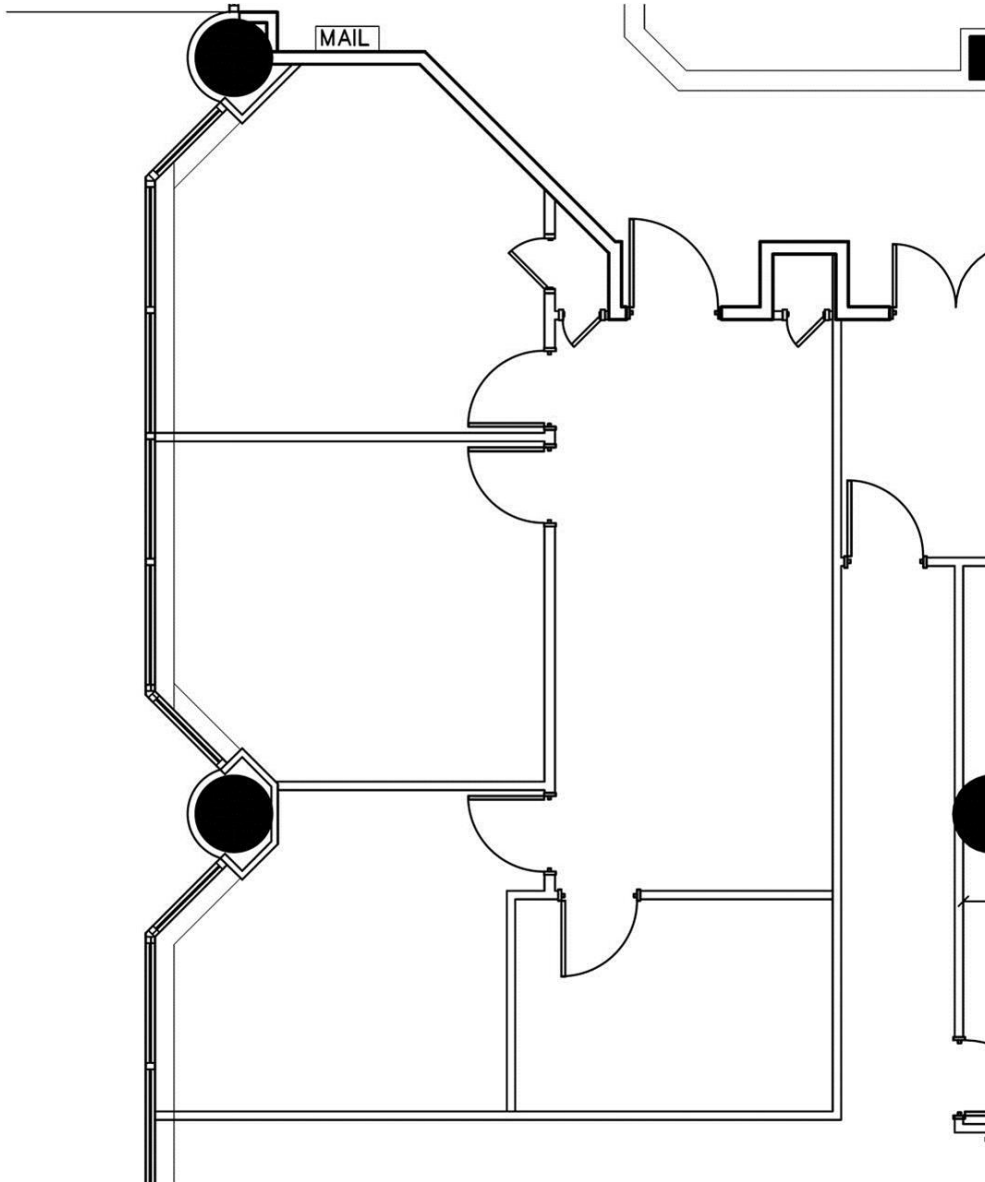
PROSPECTING BROKERS SHOULD ONLY BE ENTITLED TO A COMMISSION calculated in accordance with the rates approved by our principal only if such procuring broker executes a brokerage agreement acceptable to us and our principal and the conditions as set forth in the brokerage agreement are fully and unconditionally satisfied. Although all information furnished regarding property for sale, rental, or financing is from sources deemed reliable, such information has not been verified and no express representation is made nor is any to be implied as to the accuracy thereof and it is submitted subject to errors, omissions, change of price, rental or other conditions, prior sale, lease or financing, or withdrawal without notice and to any special conditions imposed by our principal.

244 Westchester Avenue

White Plains, NY



Partial 1st Floor - 1, 274 RSF



Glenn P. Walsh Executive Managing Director 914.881.1096 gwalsh@ngkf.com

Lawrence A. Ruggieri Senior Managing Director 914.881.1025 lruggieri@ngkf.com

Ross Armstrong Associate 914.881.1518 rarmstrong@ngkf.com

Leased By:



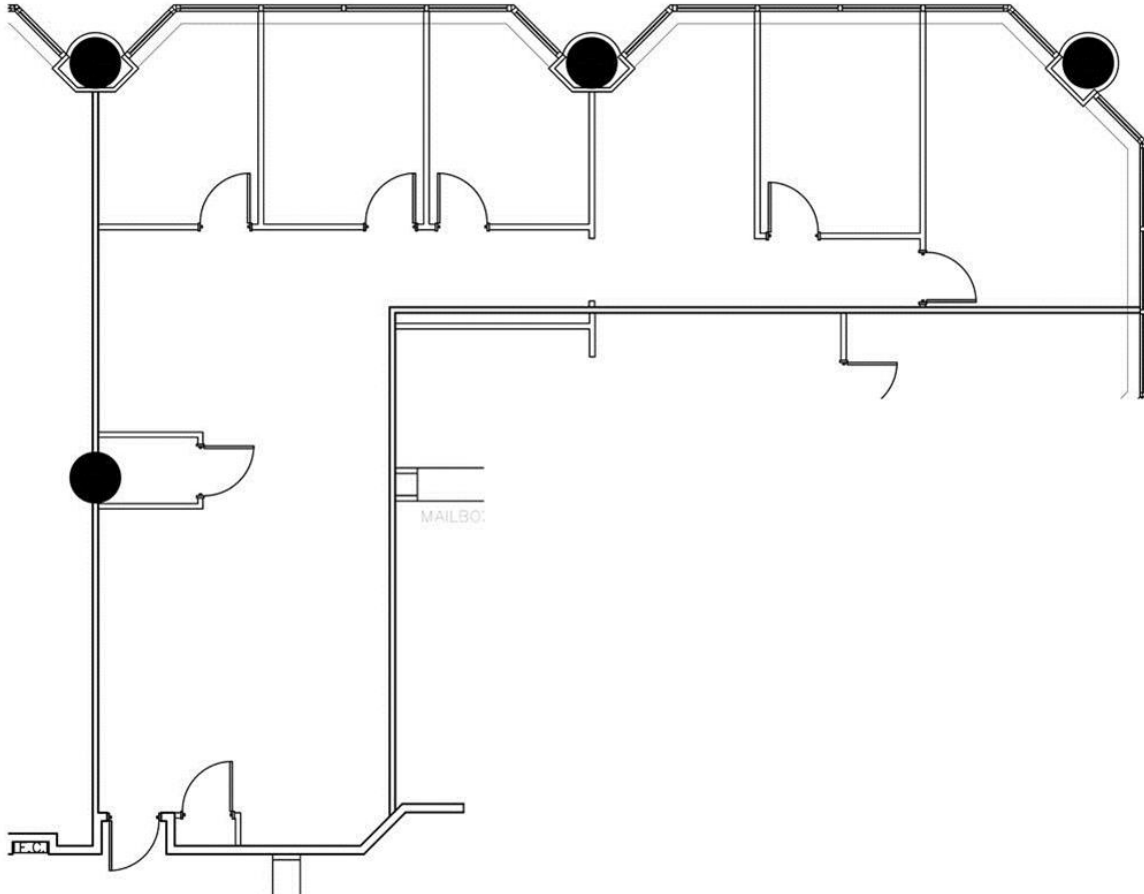
Procuring broker shall only be entitled to a commission calculated in accordance with the rates approved by our principal only if such procuring broker executes a brokerage agreement acceptable to us and our principal and the conditions as set forth in the brokerage agreement are fully and unconditionally satisfied. Although all information furnished regarding property for sale, rental, or financing is from sources deemed reliable, such information has not been verified and no express representation is made nor is any to be implied as to the accuracy thereof and it is submitted subject to errors, omissions, change of price, rental or other conditions, prior sale, lease or financing, or withdrawal without notice and to any special conditions imposed by our principal.

244 Westchester Avenue

White Plains, NY



Partial 1st Floor - 2,089 RSF



Glenn P. Walsh Executive Managing Director 914.881.1096 gwalsh@ngkf.com

Lawrence A. Ruggieri Senior Managing Director 914.881.1025 lruggieri@ngkf.com

Ross Armstrong Associate 914.881.1518 ramstrong@ngkf.com

Leased By:



Owned & Managed By:

HTA

Healthcare Trust of America, Inc.

A Leading Owner and Operator of Medical Office Buildings

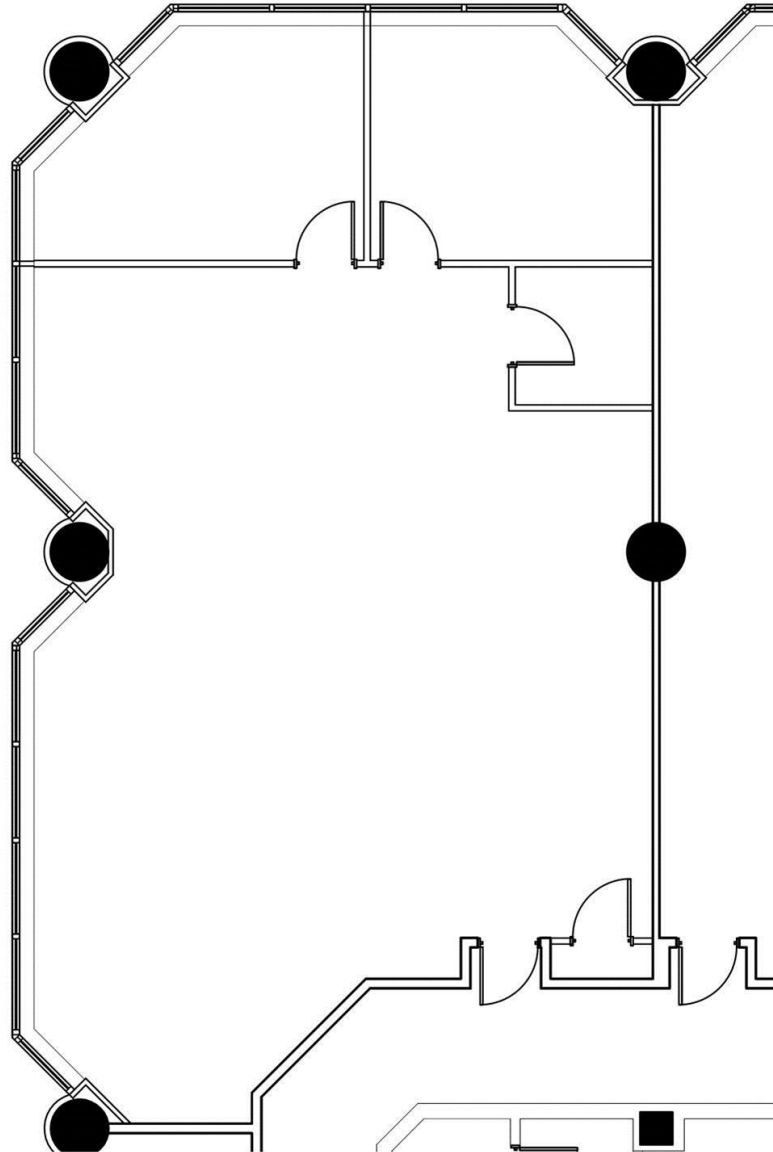
Procuring broker shall only be entitled to a commission calculated in accordance with the rates approved by our principal only if such procuring broker executes a brokerage agreement acceptable to us and our principal and the conditions as set forth in the brokerage agreement are fully and unconditionally satisfied. Although all information furnished regarding property for sale, rental, or financing is from sources deemed reliable, such information has not been verified and no express representation is made nor is any to be implied as to the accuracy thereof and it is submitted subject to errors, omissions, change of price, rental or other conditions, prior sale, lease or financing, or withdrawal without notice and to any special conditions imposed by our principal.

244 Westchester Avenue

White Plains, NY



Partial 1st Floor - 2,150 RSF



Glenn P. Walsh Executive Managing Director **914.881.1096** gwalsh@ngkf.com
Lawrence A. Ruggieri Senior Managing Director **914.881.1025** lruggieri@ngkf.com
Ross Armstrong Associate **914.881.1518** lruggieri@ngkf.com

Leased By:



Owned & Managed By:

HTA
Healthcare Trust of America, Inc.
A Leading Owner and Operator of Medical Office Buildings

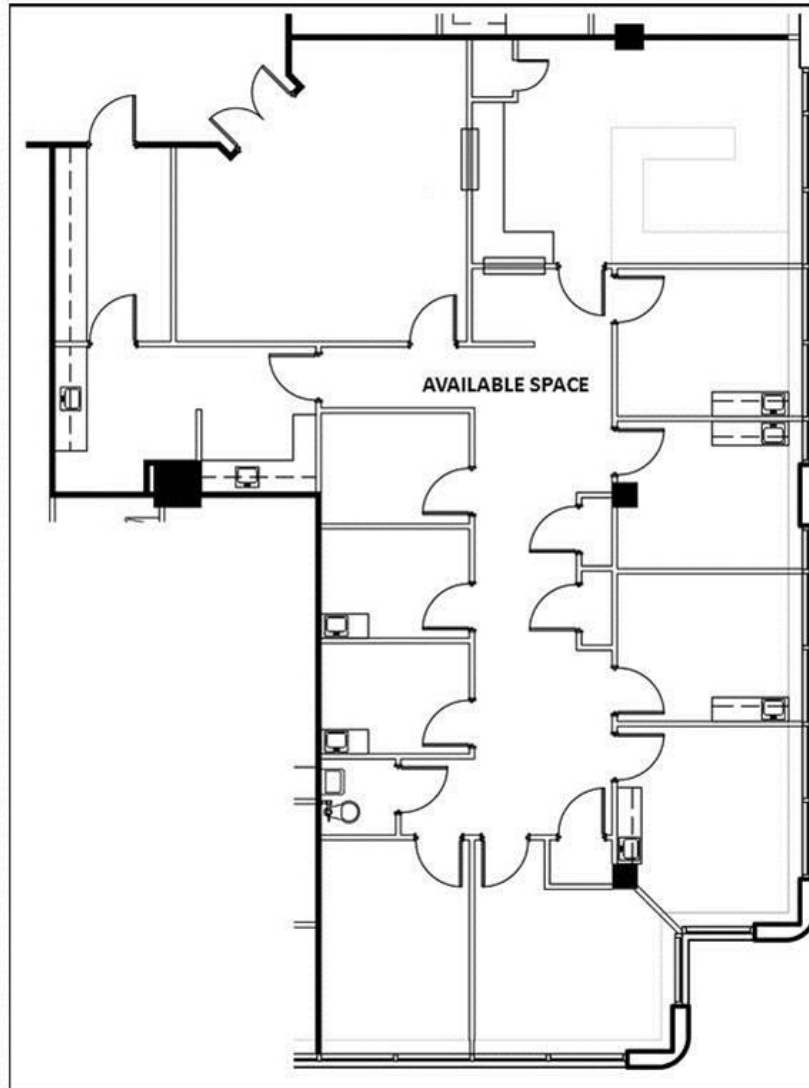
Procuring broker shall only be entitled to a commission calculated in accordance with the rates approved by our principal only if such procuring broker executes a brokerage agreement acceptable to us and our principal and the conditions as set forth in the brokerage agreement are fully and unconditionally satisfied. Although all information furnished regarding property for sale, rental, or financing is from sources deemed reliable, such information has not been verified and no express representation is made nor is any to be implied as to the accuracy thereof and it is submitted subject to errors, omissions, change of price, rental or other conditions, prior sale, lease or financing, or withdrawal without notice and to any special conditions imposed by our principal.

244 Westchester Avenue

White Plains, NY



Partial 2nd Floor - 3,115 RSF



Glenn P. Walsh Executive Managing Director **914.881.1096** gwalsh@ngkf.com
Lawrence A. Ruggieri Senior Managing Director **914.881.1025** lruggieri@ngkf.com
Ross Armstrong Associate **914.881.1518** ramstrong@ngkf.com

Leased By:



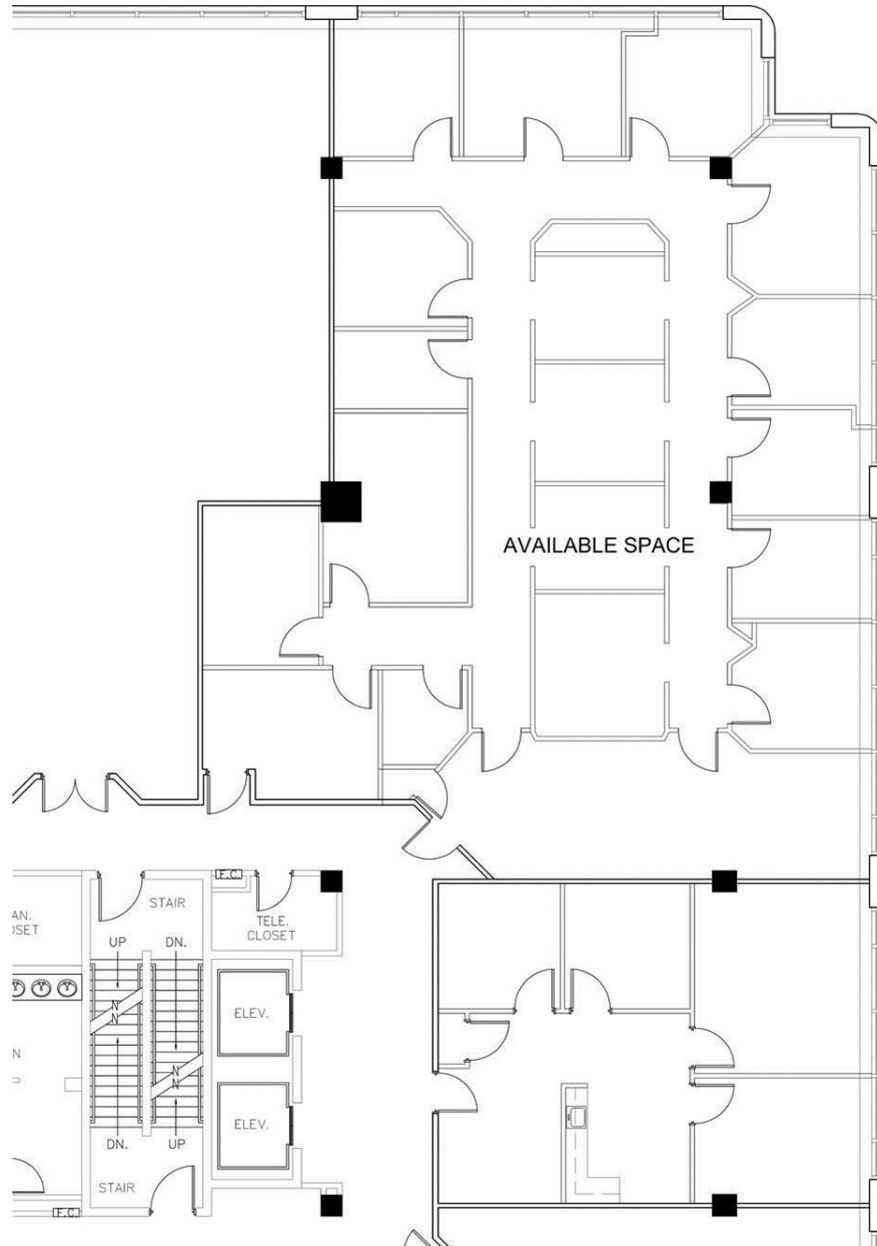
Procuring broker shall only be entitled to a commission calculated in accordance with the rates approved by our principal only if such procuring broker executes a brokerage agreement acceptable to us and our principal and the conditions as set forth in the brokerage agreement are fully and unconditionally satisfied. Although all information furnished regarding property for sale, rental, or financing is from sources deemed reliable, such information has not been verified and no express representation is made nor is any to be implied as to the accuracy thereof and it is submitted subject to errors, omissions, change of price, rental or other conditions, prior sale, lease or financing, or withdrawal without notice and to any special conditions imposed by our principal.

244 Westchester Avenue

White Plains, NY



Partial 2nd Floor - 3,777 RSF



Glenn P. Walsh Executive Managing Director **914.881.1096** gwalsh@ngkf.com

Lawrence A. Ruggieri Senior Managing Director **914.881.1025** luggieri@ngkf.com

Ross Armstrong Associate **914.881.1518** rarmstrong@ngkf.com

Leased By:



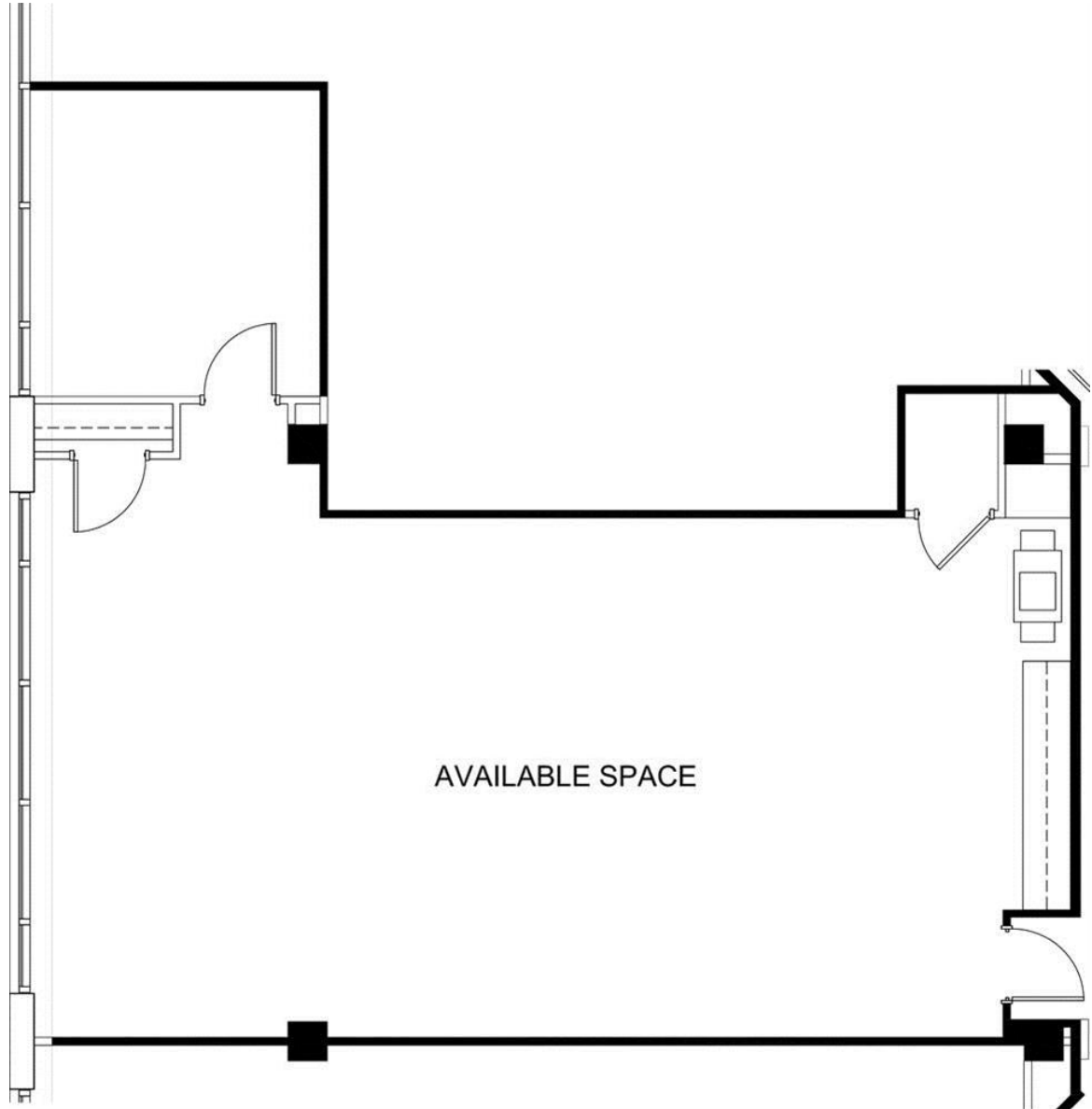
Procuring broker shall only be entitled to a commission calculated in accordance with the rates approved by our principal only if such procuring broker executes a brokerage agreement acceptable to us and our principal and the conditions as set forth in the brokerage agreement are fully and unconditionally satisfied. Although all information furnished regarding property for sale, rental, or financing is from sources deemed reliable, such information has not been verified and no express representation is made nor is any to be implied as to the accuracy thereof and it is submitted subject to errors, omissions, change of price, rental or other conditions, prior sale, lease or financing, or withdrawal without notice and to any special conditions imposed by our principal.

244 Westchester Avenue

White Plains, NY



Partial 3rd Floor - 1,545 RSF



Glenn P. Walsh Executive Managing Director 914.881.1096 gwalsh@ngkf.com

Lawrence A. Ruggieri Senior Managing Director 914.881.1025 lruggieri@ngkf.com

Ross Armstrong Associate 914.881.1518 rarmstrong@ngkf.com

Leased By:



Owned & Managed By:



Procuring broker shall only be entitled to a commission calculated in accordance with the rates approved by our principal only if such procuring broker executes a brokerage agreement acceptable to us and our principal and the conditions as set forth in the brokerage agreement are fully and unconditionally satisfied. Although all information furnished regarding property for sale, rental, or financing is from sources deemed reliable, such information has not been verified and no express representation is made nor is any to be implied as to the accuracy thereof and it is submitted subject to errors, omissions, change of price, rental or other conditions, prior sale, lease or financing, or withdrawal without notice and to any special conditions imposed by our principal.