

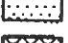

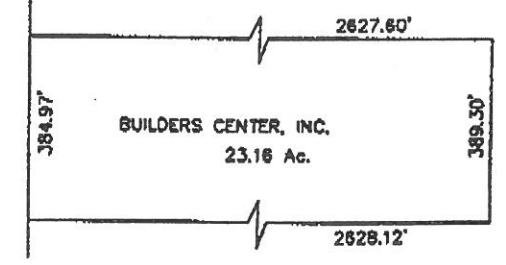
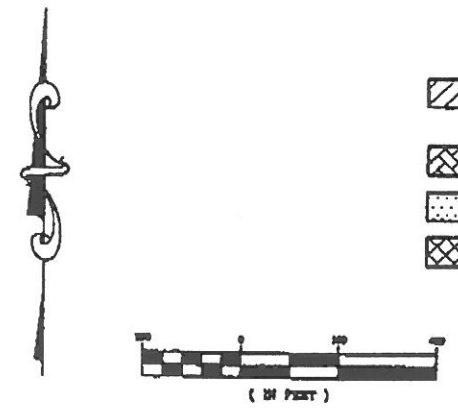


- ZONING LEGEND:**
-  R-5 SINGLE FAMILY AND/OR MULTIFAMILY DISTRICT, HIGH DENSITY POPULATION
  -  R-3 NONCONVENTIONAL RESIDENTIAL
  -  C-1 LIMITED COMMERCIAL DISTRICT
  -  C-2 COMMERCIAL DISTRICT



**COMPILED ZONING MAP**  
OF  
**152 ACRE TRACT**

BEING SITUATED IN  
SECTION 45, T10S-R3E  
ASCENSION PARISH, LOUISIANA  
LOCATED IN THE NORTHWEST QUADRANT  
FORMED BY THE INTERSECTION OF  
INTERSTATE I-10 & LA 44  
FOR  
**GATEWAY PROPERTIES**  
P.O. BOX 40148  
BATON ROUGE, LA 70835

DESIGNED: GWS	DATE: 3-4-97
DRAWN: MJK	SHEET NO: 1
CHECKED: GWS	

**GWS Engineering, Inc.**  
Engineering Consultants - Land Surveyors  
7680 Parkside Rd. • Suite 200 • Baton Rouge, LA 70806