

## 1100 East Union Street

1100 East Union Street  
Seattle, WA 98122

Suite #1B: 1,835 SF  
Lower Level: 800 SF

Direct entry

Two private bathrooms

Shower

Full kitchen

One private office

Mezzanine

2 surface lot parking stalls at  
\$200/stall/month



### Location

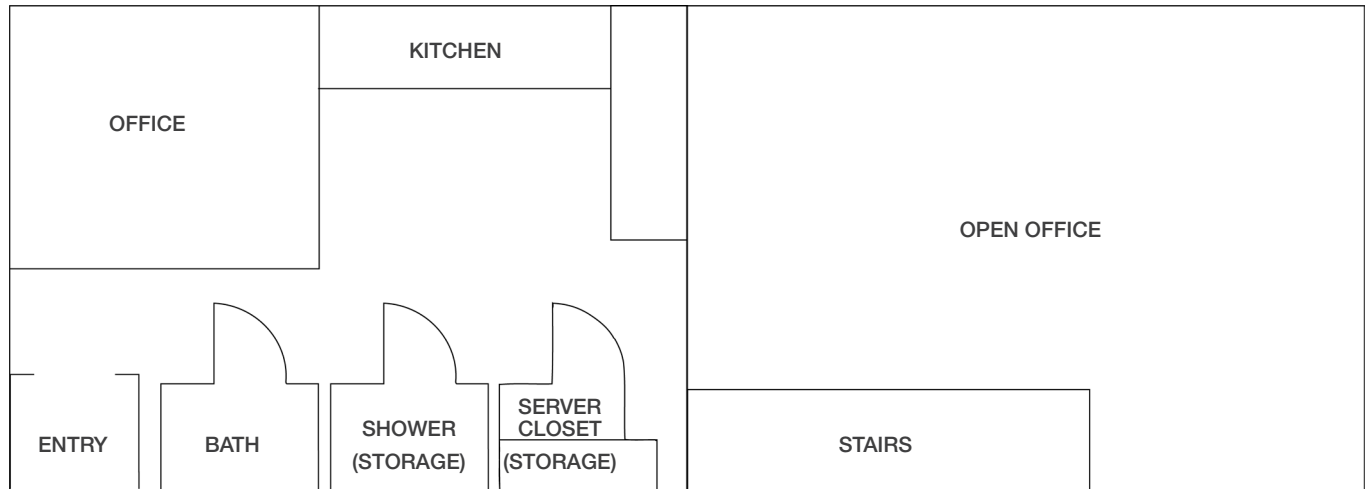


### Contact

**Jake Bos**  
Vice President  
206.296.9640  
jbos@kiddermathews.com

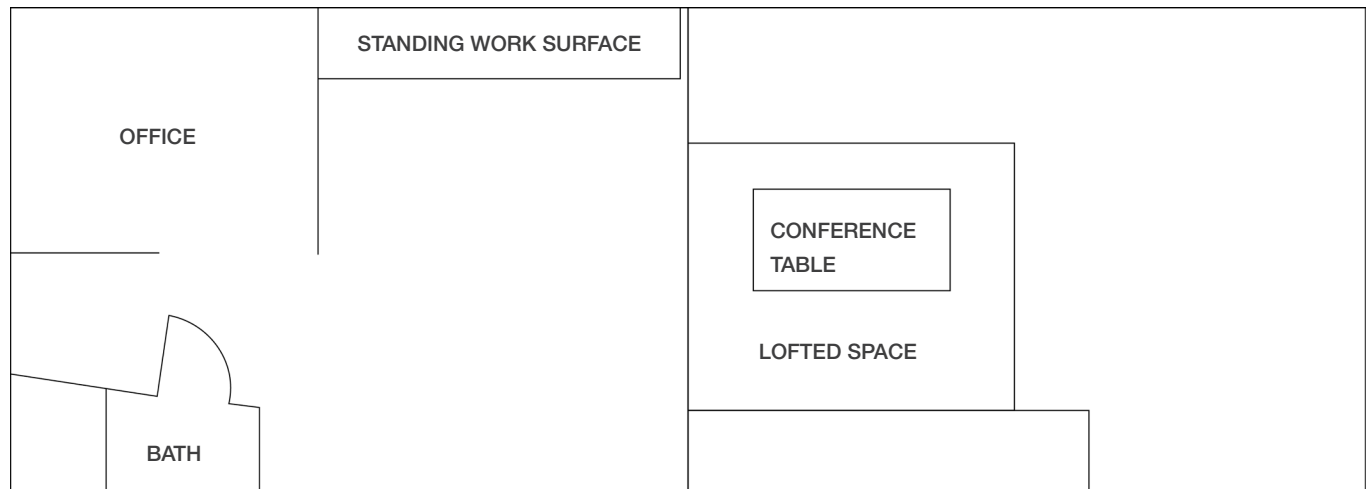
## Suite #1B

### Main Level Floor Plan



\*Drawing not to scale

### Mezzanine Level Floor Plan



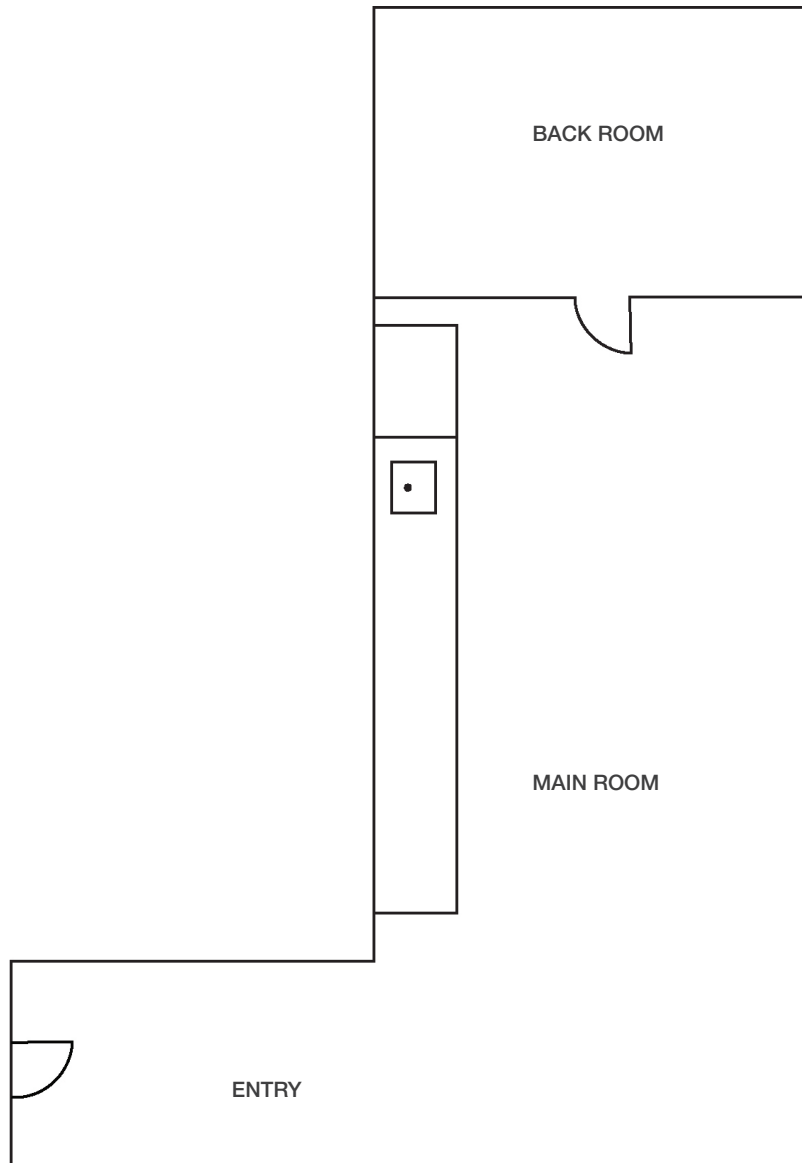
\*Drawing not to scale

### Contact

**Jake Bos**  
206.296.9640  
jbos@kiddermathews.com

## Lower Level

### Floor Plan



\*Drawing not to scale

### Contact

**Jake Bos**

206.296.9640

[jbos@kiddermathews.com](mailto:jbos@kiddermathews.com)

## 1100 East Union Street

### Photos



### Contact

**Jake Bos**

206.296.9640

[jbos@kiddermathews.com](mailto:jbos@kiddermathews.com)