

FOR LEASE

28 BETHLEHEM PLAZA

28 W Broad St

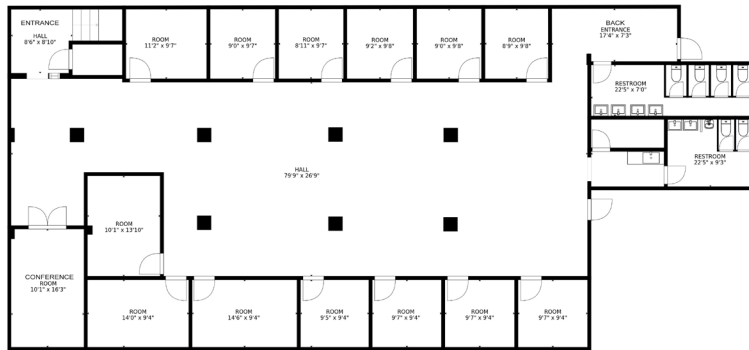
BETHLEHEM



*Please* **Lisa Meszler Lyon, Agent**  
*Contact:* 610 332 9900 • [llyon@alt-realty.net](mailto:llyon@alt-realty.net)

559 MAIN STREET, SUITE 300 • BETHLEHEM, PA 18018 • [ALT-REALTY.NET](http://ALT-REALTY.NET)

# OFFICE



Type	Office
Year Built	1956
Offices	13 Private
Typical Floor	5,765 SF
<b>AVAILABILITY</b>	
Min Divisible	5145sf office space, lower level
Asking Rent	\$5900/mo gross rent
Parking	14 Surface parking spaces

**28 W Broad St** has 5145sf office space available for office use. There are 13 private offices, conference room and 2149sf of common area space for cubicles

Downtown Bethlehem has experienced a renaissance in recent years based on the city's historic character, and the Property is situated within walking distance of the charming Hotel Bethlehem, numerous boutiques, restaurants and other specialty shops along Main Street. Less than a half mile away, the Property also benefits from convenient access to PA Routes 378, 22 and I-78.