

AVAILABLE FOR LEASE

3605 Woodhead Drive, Unit 108
Northbrook, IL 60062

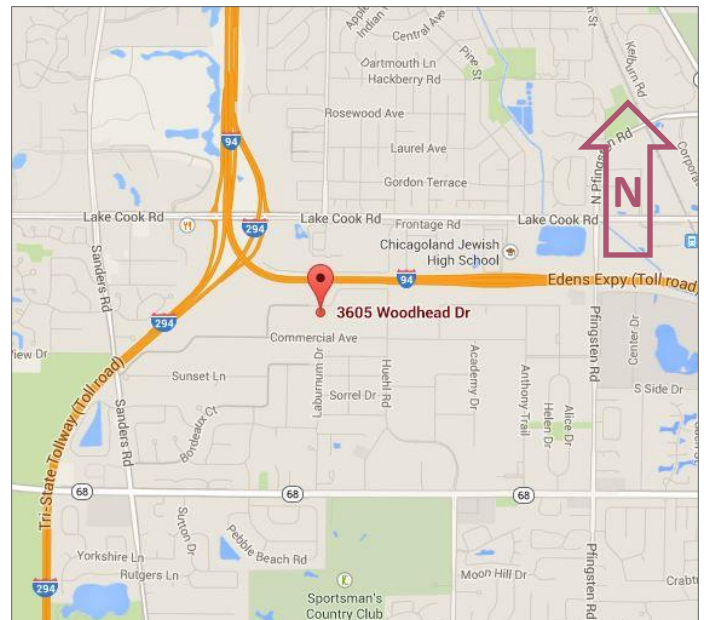


1,154 SF

OFFICE SPACE

Negotiable Pricing

- 1,154 SF Available NOW in Sky Harbor Business Park!
- Private entrance, large reception area, 2-3 private offices, huge conference room with kitchenette.
- Plenty of parking, 24 hour access, dog-friendly building.
- Common area lunchroom w/vending machines
- Professionally managed by Key Investment & Management Inc.



**KEY INVESTMENT
& Management Inc.**

Office: 630.932.5757
Fax: 630.932.5755
1263 S. Highland Ave., Suite 2W,
Lombard, IL 60148
www.key-investment.com

FOR FURTHER INFORMATION CONTACT:

Kimberly Hess
Office: 630.932.5757 Ext. 208
khess@key-investment.com

Se Habla Español

Real Estate

Brokerage

Leasing

Management

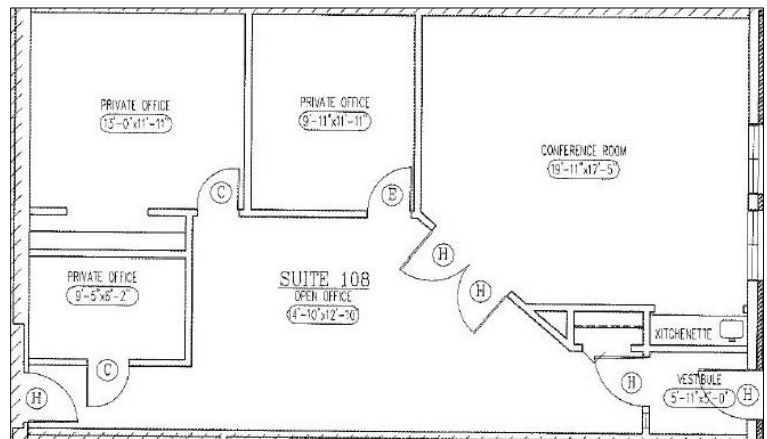
3605 Woodhead Drive, Unit 108
Northbrook, IL 60062

1263 S. Highland Ave, Suite 2W
Lombard, IL 60148
Office: 630.932.5757 Ext. 208 Fax: 630.932.5755
www.key-investment.com
Kimberly Hess
khess@key-investment.com



AVAILABLE FOR LEASE

PROPERTY SPECIFICATIONS	
Building Size:	21,070
Available Space:	1,154 SF
Year Built:	1972
Zoning:	C3
Parking:	Open Lot
Ceiling Height:	8'
Power:	200 AMP
Washrooms:	Common Area Available or Private
Sprinklered:	No
Utilities:	Gas & Electric
Real Estate Taxes:	Included
CAM:	Included
Possession:	Immediately
Lease Term:	Minimum 1 year
Lease Rate:	Negotiable Pricing Priv. Bath - \$100.00/mo.



All dimensions are approximate. Drawing not to scale.



Real Estate

Brokerage

Leasing

2/7/2017
Management