

For Lease

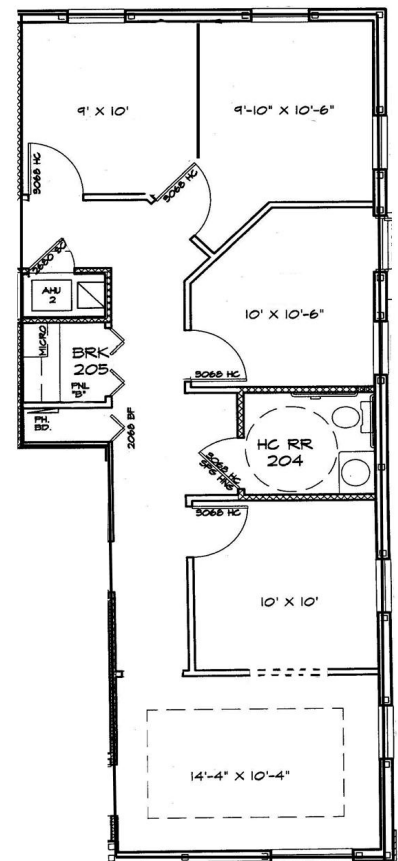


W. Hillsborough Medical/Professional Office

13632 W. Hillsborough Ave. | Tampa, FL 33635

- 925 SF available for immediate occupancy
- Ideal for medical use with two functioning exam rooms, but easily modified for a professional user
- Annual average daily traffic of 54,000 cars and high visibility pylon signage
- Ample parking
- Central location in NW Hillsborough County with easy access to Pinellas, Pasco and TIA

FLOOR PLAN



THERESA MARGARIS

T: 727-238-3876 x305

M: 813-765-0948

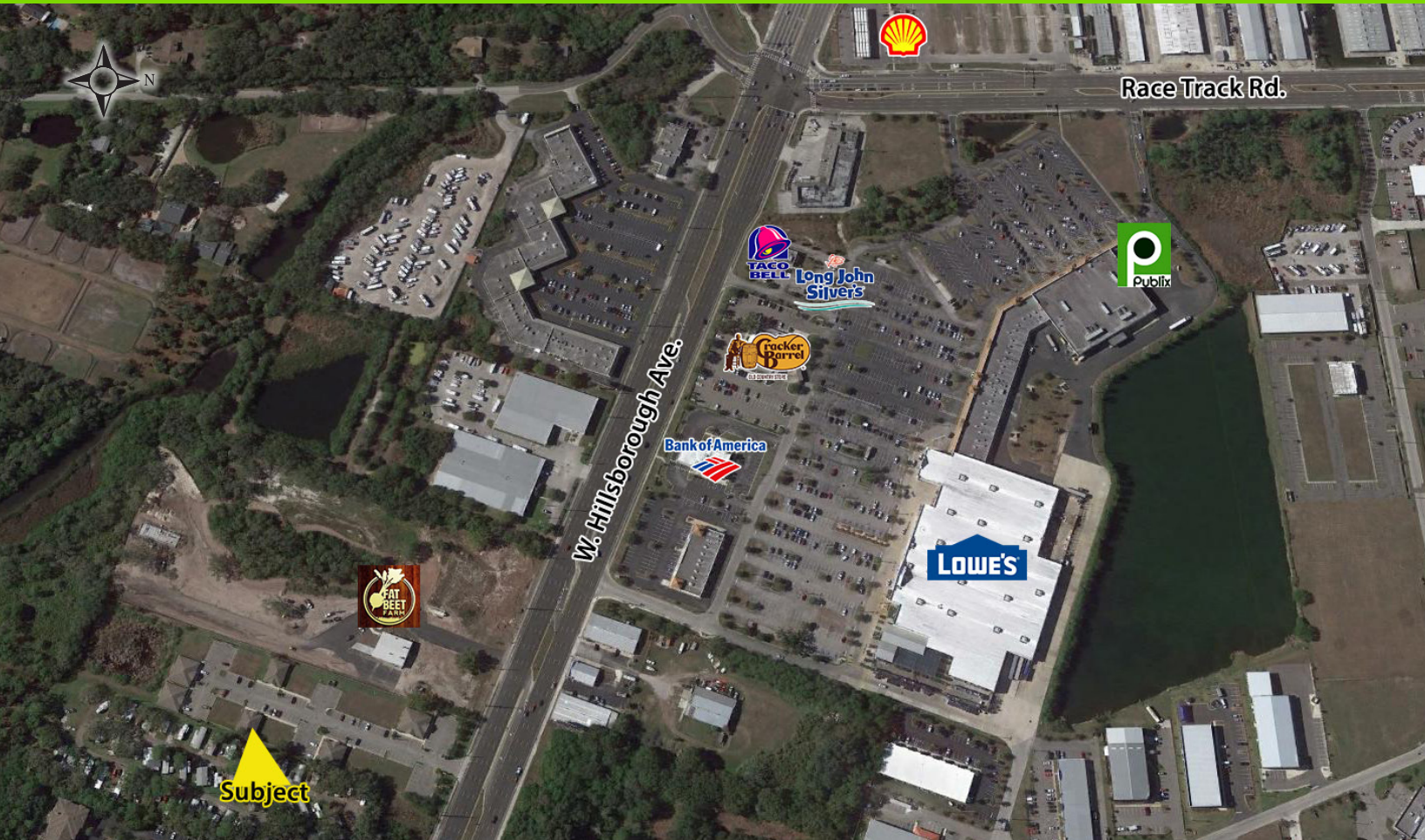
tmargaris@holdthyssen.com

28163 U.S. Highway 19 N.

Suite 102

Clearwater, FL 33761

www.holdthyssen.com



PHOTOGRAPHS
Covington Professional Park



FOR MORE INFORMATION:



THERESA MARGARIS
tmargaris@holdthyssen.com
T: 727-238-3876 x305
M: 813-765-0948

28163 U.S. Highway 19 N.
Suite 102
Clearwater, FL 33761



www.holdthyssen.com

The information above has been obtained from sources believed reliable. While we do not doubt its accuracy we make no guarantee, warranty or representation about it. It is your responsibility to independently confirm its accuracy and completeness. Any projections, opinions, assumptions, or estimates used are for example only and do not represent the current or future performance of the property. Hold-Thyssen, Inc. is a licensed real estate broker.