



MEACHAM/OPPENHEIMER CORFAC INTERNATIONAL  
Commercial Brokerage | Investment Sales | Property Management



**2082 S. WINCHESTER BLVD.  
CAMPBELL,  
CALIFORNIA**

**Winchester Boulevard  
Freestanding Retail Building  
FOR SALE or LEASE**



#### PROPERTY INFORMATION:

- 2,250± SF Building
- All New Interiors
- Open Retail Showroom, Back Room, Restroom
- 10.5' Foot Ceilings
- On Site Parking
- Excellent Location On Winchester Blvd., Just 1 Block From Campbell Ave. and Downtown Campbell
- Traffic on S. Winchester: 24,500± ADT
- Sale Price \$1,550,000.00

#### ESTIMATED DEMOGRAPHICS:

	<u>1 MILE</u>	<u>3 MILES</u>	<u>5 MILES</u>
POPULATION:	28,169	225,835	545,971
AVG. HH INCOME:	\$92,844	\$113,629	\$126,606

#### FOR MORE INFORMATION CONTACT:

**MEACHAM/OPPENHEIMER, INC.**  
**CORFAC INTERNATIONAL**  
8 No. San Pedro St., Suite 300  
San Jose, California 95110  
Tel: 408.378.5900  
Fax: 408.378.5903  
[www.moinc.net](http://www.moinc.net)

**DAVID TAXIN**

Lic. #00983163

[dtaxin@moinc.net](mailto:dtaxin@moinc.net)

**(408) 378-5900**



**2082 S. Winchester Boulevard • Campbell, CA 95008**



**Large Windows, Tile Floor and Drop Ceiling**

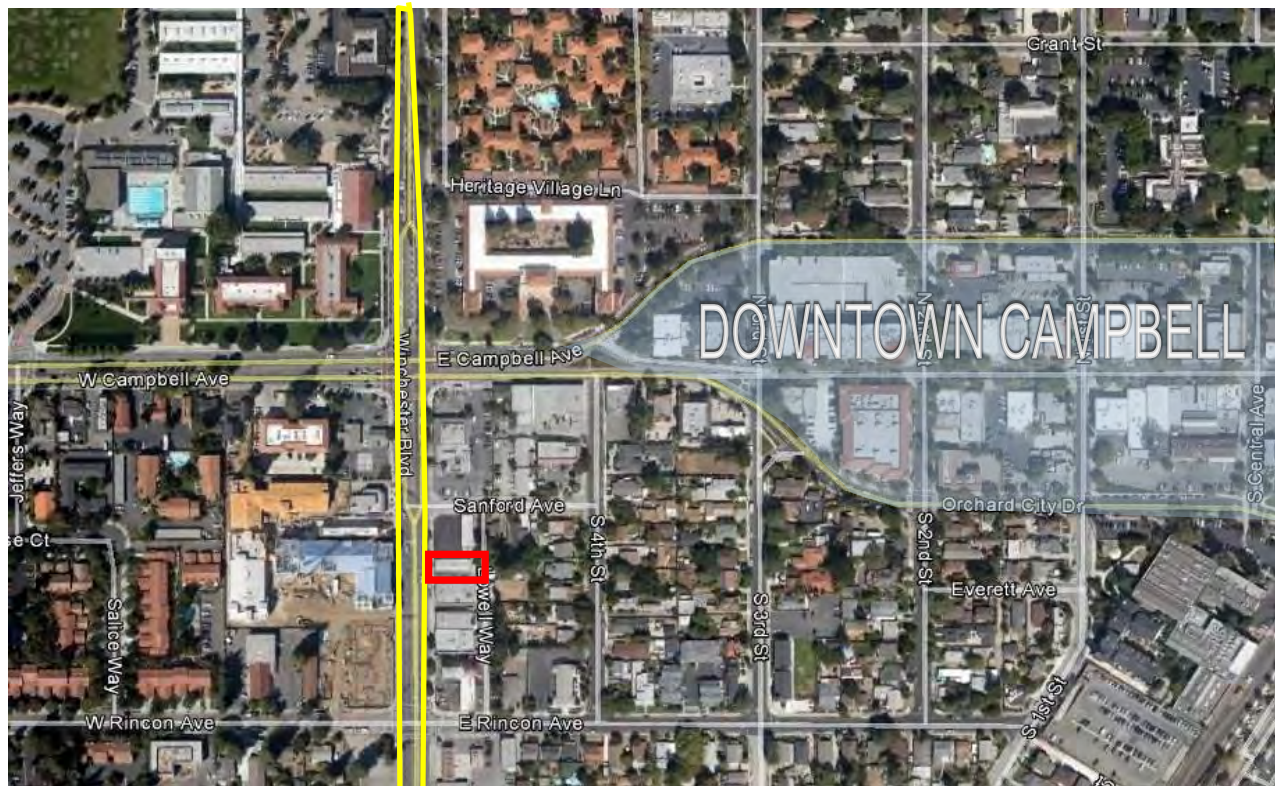


**MEACHAM/OPPENHEIMER, INC.**  
**CORFAC INTERNATIONAL**  
8 No. San Pedro St., Suite 300  
San Jose, California 95110  
Tel: 408.378.5900  
[www.moinc.net](http://www.moinc.net)

**David Taxin**  
Lic. #00897292  
[dtaxin@moinc.net](mailto:dtaxin@moinc.net)  
**(408) 477-2508 Direct**  
**(408) 378-5900 Main**



# 2082 S. Winchester Boulevard • Campbell, CA 95008



**MEACHAM/OPPENHEIMER, INC.**  
**CORFAC INTERNATIONAL**  
8 No. San Pedro St., Suite 300  
San Jose, California 95110  
Tel: 408.378.5900  
[www.moinc.net](http://www.moinc.net)

**David Taxin**  
**Lic. #00897292**  
**[dtaxin@moinc.net](mailto:dtaxin@moinc.net)**  
**(408) 477-2508 Direct**  
**(408) 378-5900 Main**