

Property Details

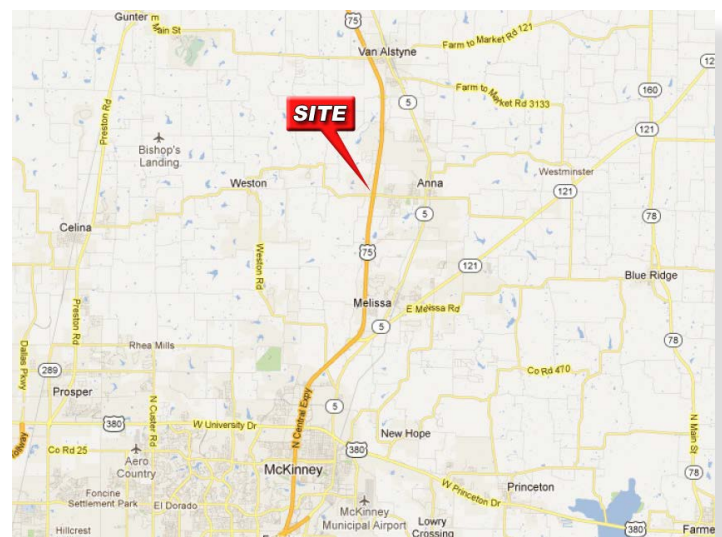
- 48 Acres Fronting US 75
- Across from Walmart Supercenter
- Adjacent to future Hospital

Traffic Counts

Hwy 75: 70,965 VPD (TXDOT, 2017)
FM 455: 4,435 VPD (TXDOT, 2017)

Market Highlights

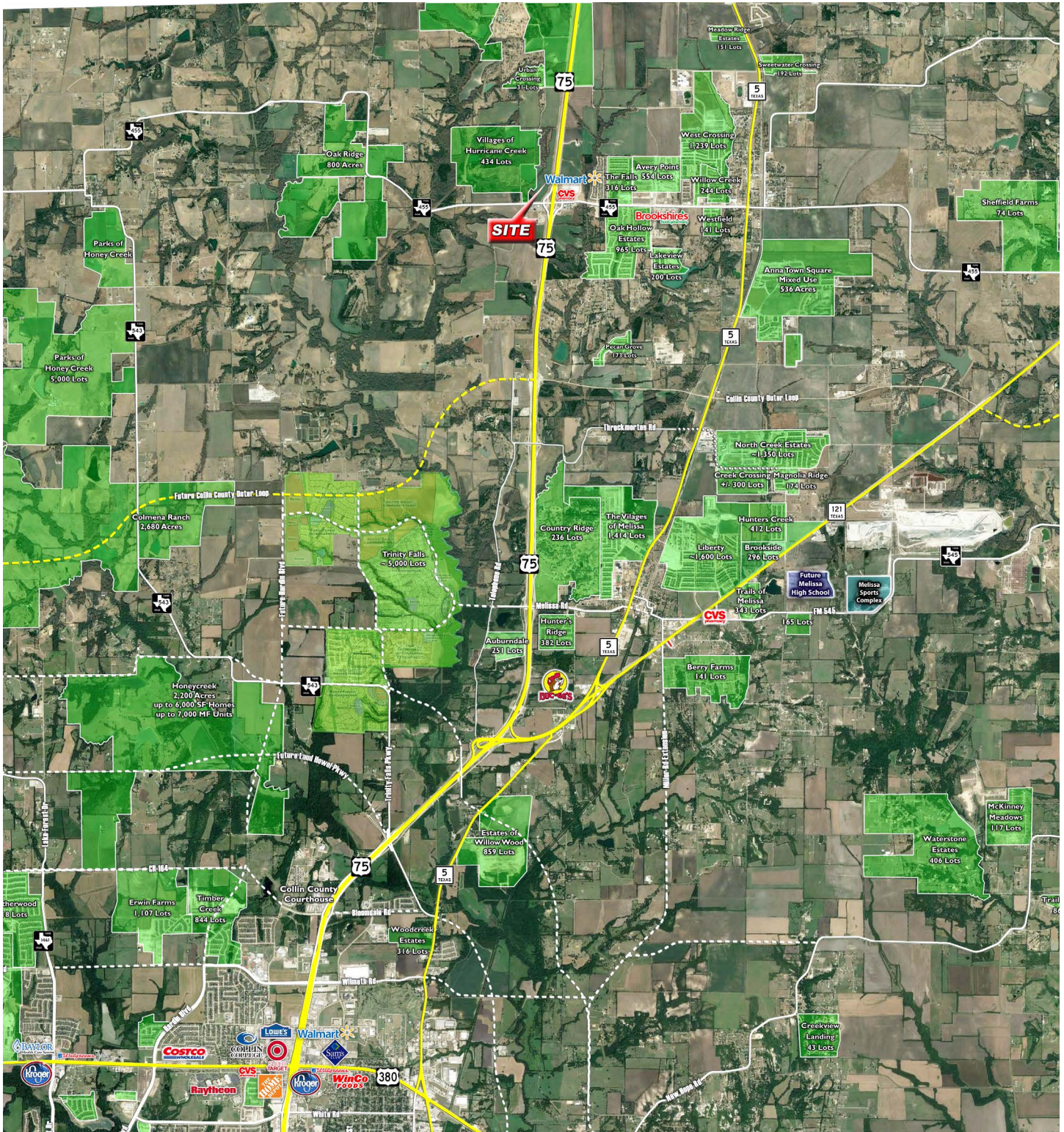
Future regional intersection, strategically located halfway between McKinney and Sherman, this site is in prime position to benefit from the Metroplex's continued growth.



Demographics	3 mi.	5 mi.
2018 Population	14,191	22,507
Avg HH Income	\$88,795	\$94,526
5 Yr Proj. Growth	28.05%	30.3%

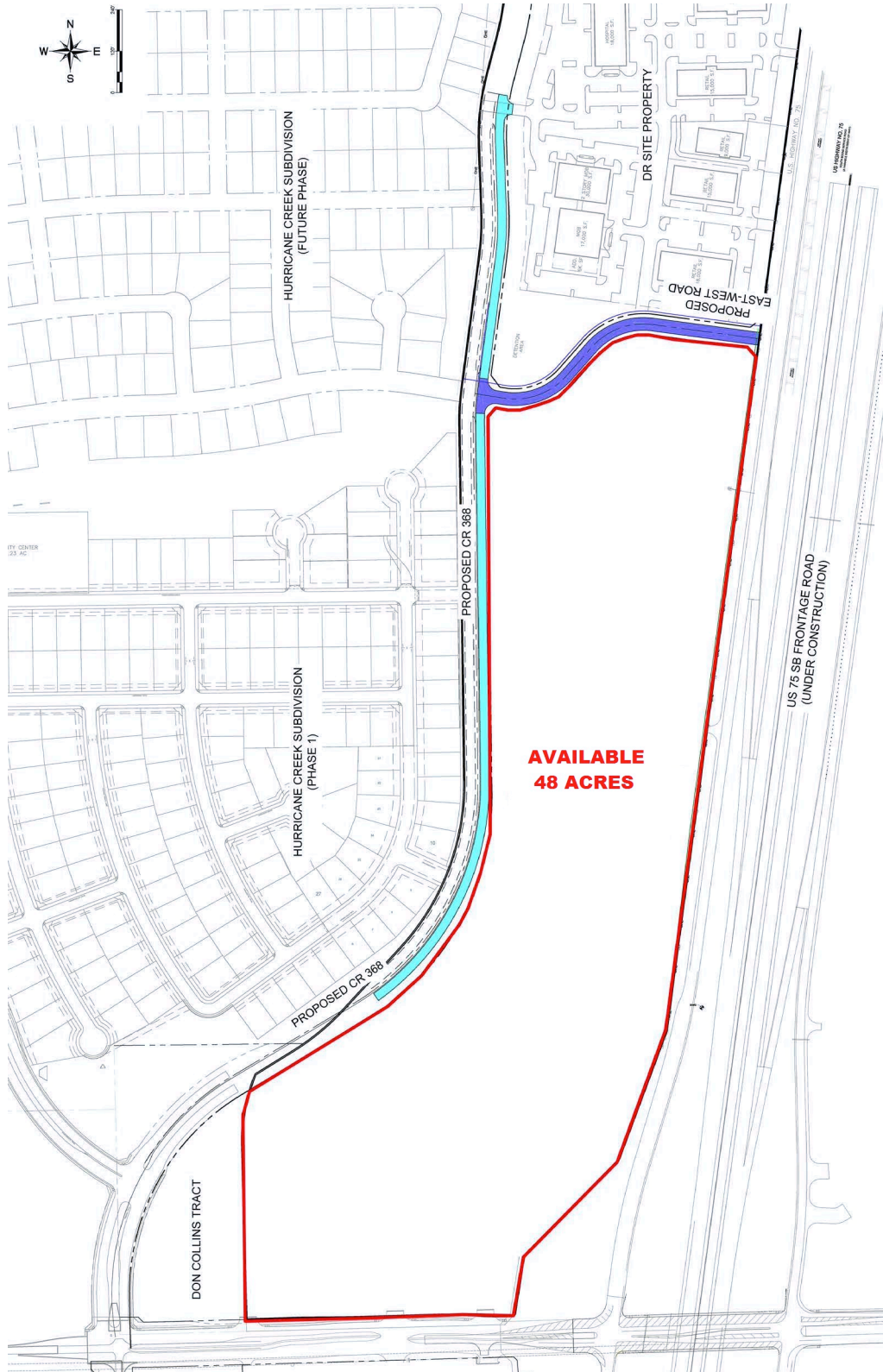
For More Information:

Stacy O. Standridge - 214.363.1998 x 1
15640 Quorum Drive • Addison, Texas 75001
(214) 363-1998 • FAX (214)363-1997



For More Information:

Stacy O. Standridge - 214.363.1998 x 1
15640 Quorum Drive • Addison, Texas 75001
(214) 363-1998 • FAX (214)363-1997



For More Information:

Stacy O. Standridge - 214.363.1998 x 1
15640 Quorum Drive • Addison, Texas 75001
(214) 363-1998 • FAX (214)363-1997

