

For Sale  
Lee's Summit  
Industrial Building



## 6 SW Industrial Drive

Lee's Summit, Missouri

- 23,628 SF Total
  - 3,404 SF Office
  - 810 mezzanine (not included in overall SF)
- Drive-in Loading
  - One (1) 14' x 20' door
  - One (1) 16' x 16' door
- 800 amp, 220/480v, 3-phase power
- 22'-23' Clear-height
- LED lighting
- PI-Planned Industrial zoning
- Column Spacing: 29'11" x 58'
- Sale Price: \$1,595,000

FOR MORE  
INFO CONTACT:

**Ben Boyd, CCIM**

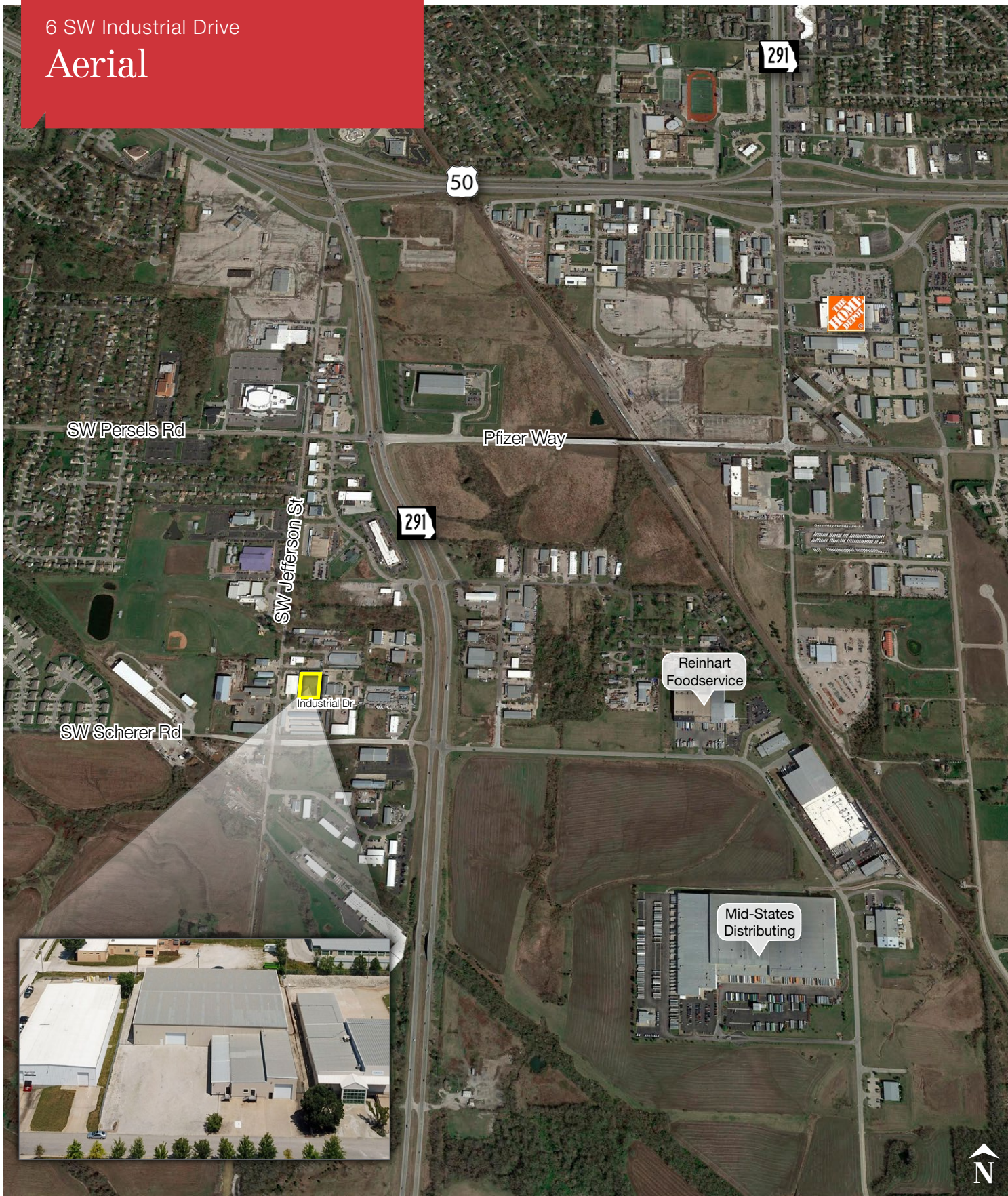
+1 913 890 2010  
ben@nai-heartland.com

NO WARRANTY OR REPRESENTATION, EXPRESS OR IMPLIED, IS MADE AS TO THE ACCURACY OF THE INFORMATION CONTAINED HEREIN, AND THE SAME IS SUBMITTED SUBJECT TO ERRORS, OMISSIONS, CHANGE OF PRICE, RENTAL OR OTHER CONDITIONS, PRIOR SALE, LEASE OR FINANCING, OR WITHDRAWAL WITHOUT NOTICE, AND OF ANY SPECIAL LISTING CONDITIONS IMPOSED BY OUR PRINCIPALS NO WARRANTIES OR REPRESENTATIONS ARE MADE AS TO THE CONDITION OF THE PROPERTY OR ANY HAZARDS CONTAINED THEREIN ARE ANY TO BE IMPLIED.

4400 College Boulevard Suite 170  
Overland Park, Kansas 66211  
+1 913 362 1000  
[nai-heartland.com](http://nai-heartland.com)

6 SW Industrial Drive

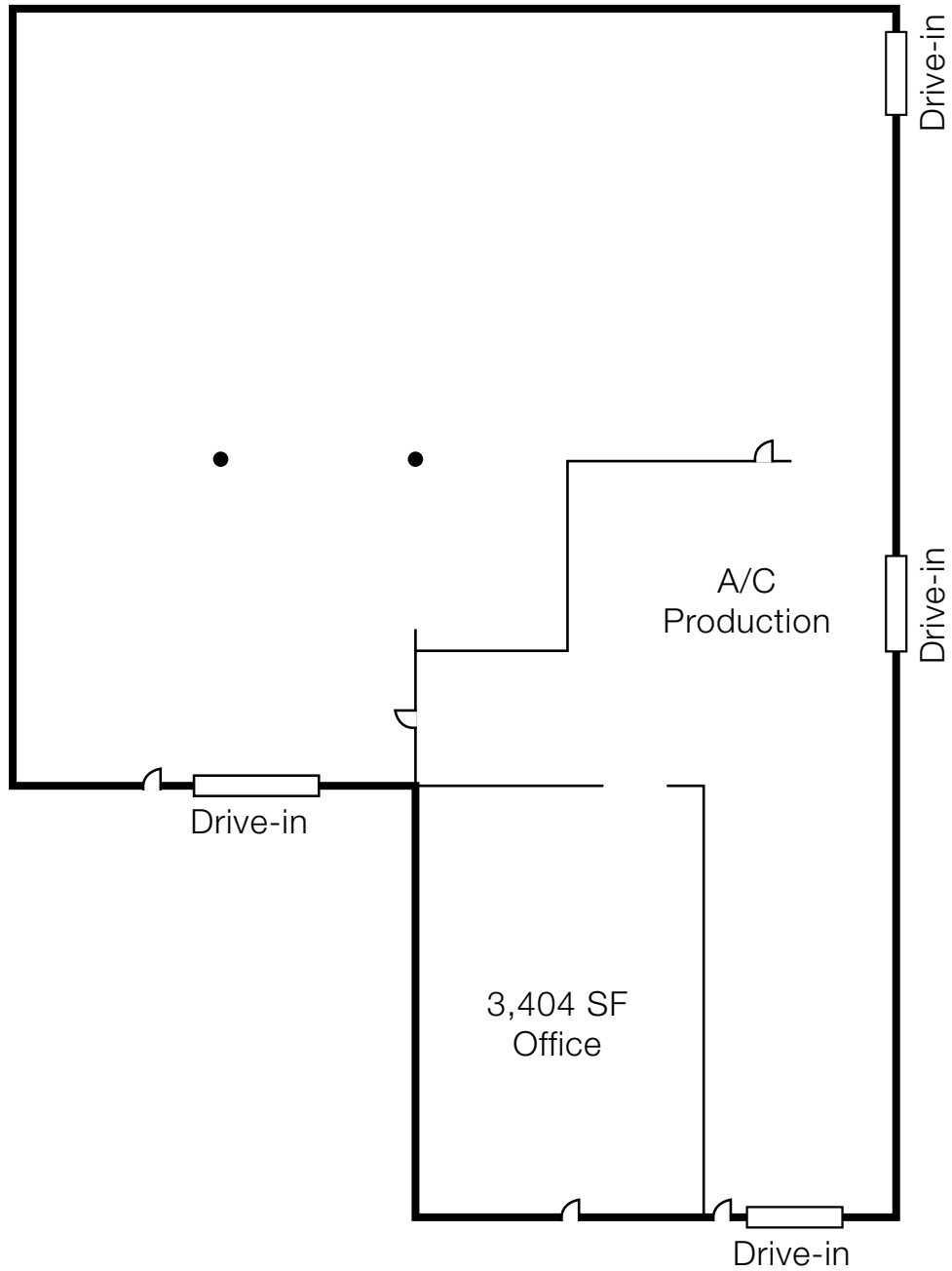
# Aerial



4400 College Boulevard Suite 170  
Overland Park, Kansas 66211  
+1 913 362 1000  
[nai-heartland.com](http://nai-heartland.com)

6 SW Industrial Drive

# Floor Plan



*\*Note: Drawings are not to scale*

6 SW Industrial Drive  
Property Photos

