

NORTON PROFESSIONAL CENTER FOR SALE/LEASE

1295-1309 Norton Avenue, Norton, OH 44203



OVERVIEW

Beautiful Four-Unit Medical Office Building in the heart of Norton is now being offered for sale as well as two spaces for lease. This 2,350 SF former orthopedic office has several exam rooms, x-ray room, nurse's station, large waiting and reception area. There is also a separate unit that was most recently used as a physical therapy office. That 1,278 SF space is made up of mainly open area, a break room, and restroom. This is a very well-maintained property that would be ideal for any medical or general office users who are looking to lease great space or who are looking for a building to buy with high quality tenants.

Suite 140 | 1,278 SF | \$16.00 SF/YR (MG)

Suite 150 | 2,350 SF | \$16.00 SF/YR (MG)

HIGHLIGHTS

- Beautiful High-End Medical Office Building
- Two Great Units (1,278 and 2,350 SF) can be Leased Separately or Together
- Two Units Occupied by Long-Term Tenants
- Great Income Stream
- Located in the Heart of Norton
- 66 Parking Spots
- High Traffic Area



Sale Price:
\$1,350,000



Lease Rate:
16.00 SF/YR
(MG)



Available SF:
1,278 - 3,628 SF



Building Size:
9,738 SF



Lot Size:
1.3 Acres

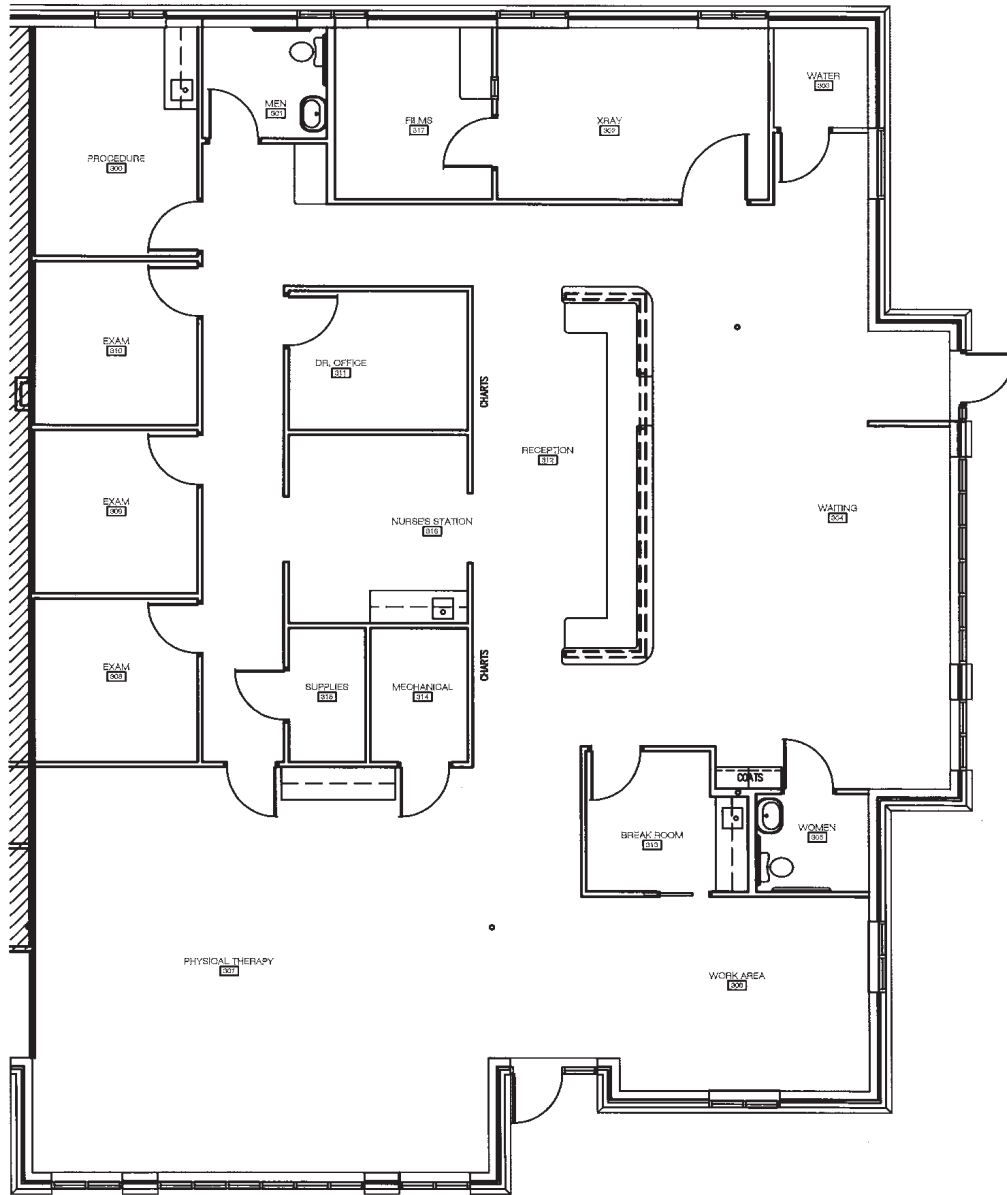


Zoning:
B-3

OUR NETWORK IS YOUR EDGE.

All information is from sources deemed reliable and is subject to errors, omissions, change of price, rental, prior sale, and withdrawal without notice. Prospect should carefully verify each item of information contained herein.

Ed Jesson
O: 330.940.9360
C: 330.760.4494
ejesson@hoffleigh.com



FLOOR PLAN
1/4" = 1'-0"

OUR NETWORK IS YOUR EDGE.

All information is from sources deemed reliable and is subject to errors, omissions, change of price, rental, prior sale, and withdrawal without notice. Prospect should carefully verify each item of information contained herein.

Ed Jesson
O: 330.940.9360
C: 330.760.4494
ejesson@hoffleigh.com

NORTON PROFESSIONAL CENTER FOR SALE/LEASE

1295-1309 Norton Avenue, Norton, OH 44203



OUR NETWORK IS YOUR EDGE.

All information is from sources deemed reliable and is subject to errors, omissions, change of price, rental, prior sale, and withdrawal without notice. Prospect should carefully verify each item of information contained herein.

Ed Jesson
O: 330.940.9360
C: 330.760.4494
ejesson@hoffleigh.com