



**COLDWELL
BANKER
COMMERCIAL**
DANFORTH

FOR LEASE

CBCWORLDWIDE.COM

931 WASHINGTON AVE

Enumclaw, WA 98022

AVAILABLE SPACE

4,000 SF

AREA

Near SR 410 in Enumclaw.



CONTACT

Brandon Thomas
206 303 9595
bthomas@cbcworldwide.com

©2021 Coldwell Banker. All Rights Reserved. Coldwell Banker and the Coldwell Banker Commercial logos are trademarks of Coldwell Banker Real Estate LLC. The Coldwell Banker® System is comprised of company owned offices which are owned by a subsidiary of Realogy Brokerage Group LLC and franchised offices which are independently owned and operated. The Coldwell Banker System fully supports the principles of the Equal Opportunity Act.

**COLDWELL BANKER COMMERCIAL
DANFORTH**
33313 1st Way S, Federal Way, WA 98003
253.874.3200



931 WASHINGTON AVE

Enumclaw, WA 98022

LEASE



OFFERING SUMMARY

Available SF: 4,000 SF

Lease Rate: \$1.15 SF/month (NNN)

Lot Size: 1.07 Acres

Building Size: 4,000 SF

Zoning: Light Industrial (LI)

PROPERTY OVERVIEW

1,600 SF office with 2,400 SF warehouse space and small yard. Zoned Light Industrial. Perfect for small contractor business. 3 large offices, 1 extra large reception area, kitchenette, and bathroom with shower.



CBCWORLDWIDE.COM

Brandon Thomas
206 303 9595
bthomas@cbcworldwide.com

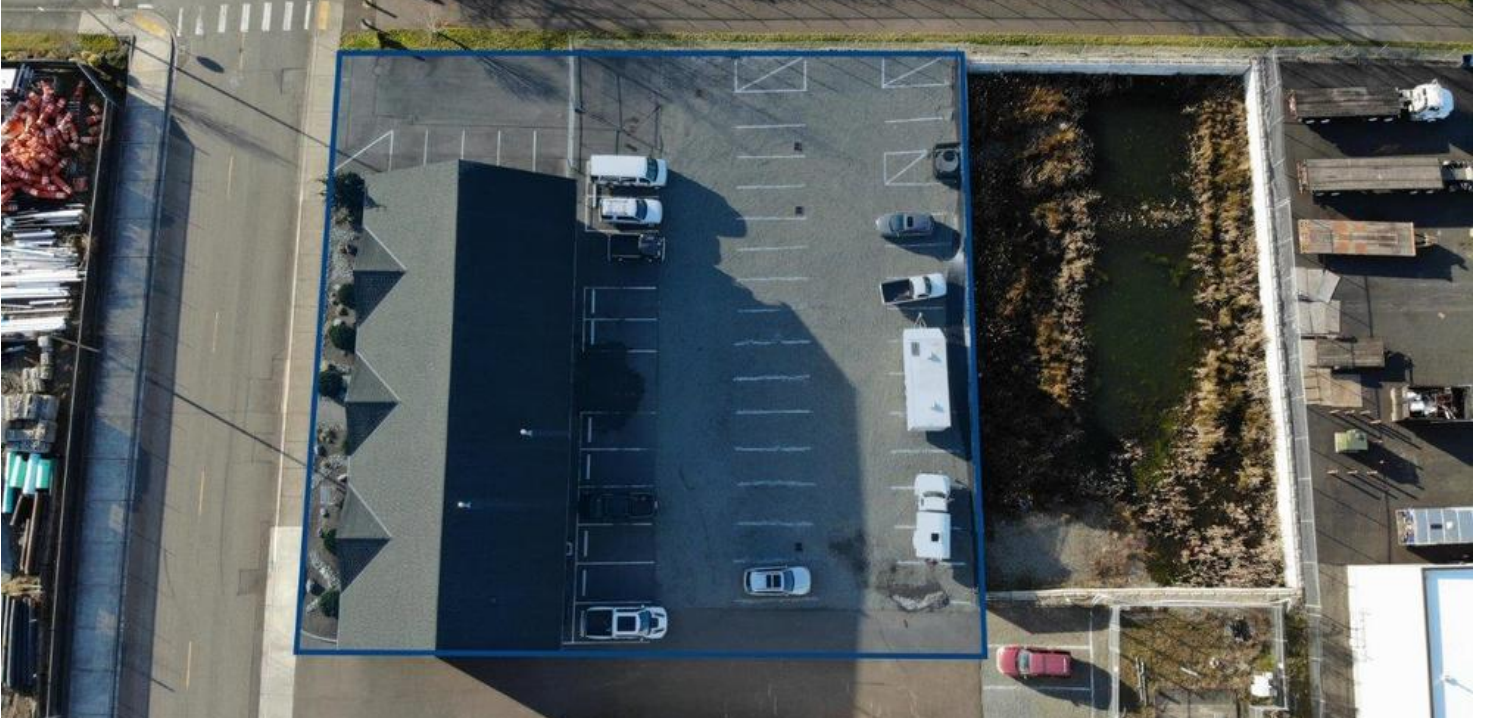




931 WASHINGTON AVE

Enumclaw, WA 98022

LEASE



CBCWORLDWIDE.COM

Brandon Thomas
206 303 9595
bthomas@cbcworldwide.com



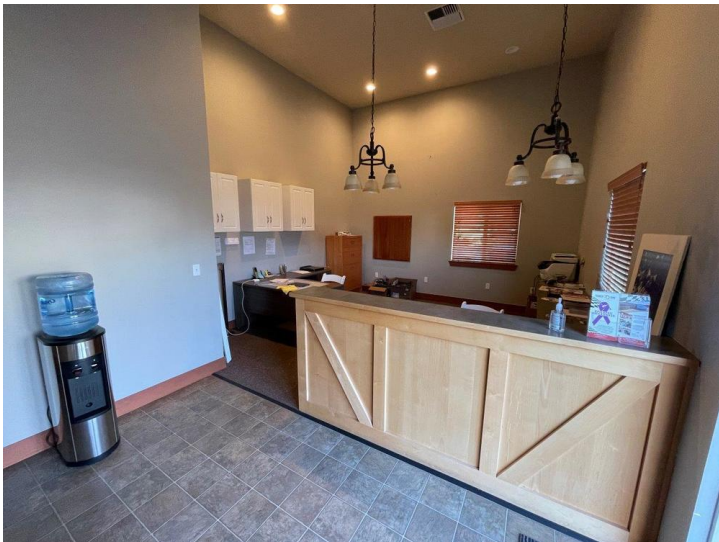
**COLDWELL
BANKER
COMMERCIAL**
DANFORTH



931 WASHINGTON AVE

Enumclaw, WA 98022

LEASE



CBCWORLDWIDE.COM

Brandon Thomas
206 303 9595
bthomas@cbcworldwide.com

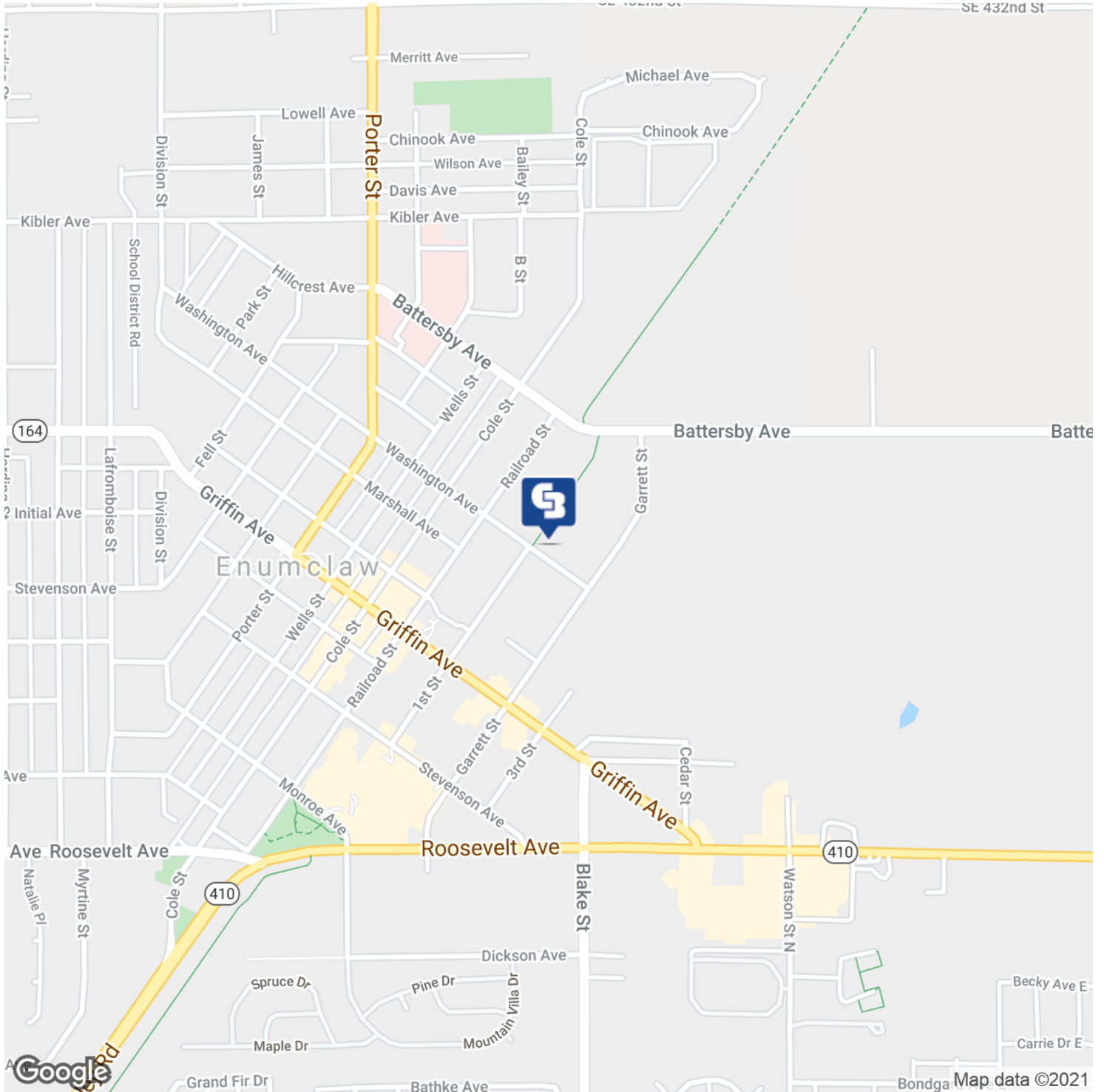
 **COLDWELL
BANKER
COMMERCIAL**
DANFORTH



931 WASHINGTON AVE

Enumclaw, WA 98022

LEASE



CBCWORLDWIDE.COM

Brandon Thomas
206 303 9595
bthomas@cbcworldwide.com



