



# For Lease

## The property

- Great multi-tenant retail shopping center shadow anchored by a Large Retail Supercenter and Lowe's
- Very easy access to the International Drive tourist corridor, Disney, Universal and all of their related parks and entertainment options
- Incredible traffic and visibility along with great access into and out of the property (72,500± AADT on S John Young Parkway)
- Significant new developments, including the new Universal Epic Universe theme park, in the area that will continue to grow the number of people looking for housing, jobs, and entertainment nearby with very strong daytime population currently
- Easy access to I-4, 528, and Florida's Turnpike

## The location

On the northeast corner of Southpark Circle and S John Young Parkway

**Sand Lake Corners at South Park**  
**8421 S John Young Parkway**  
**Orlando, FL 32819**

**Daniel Broussard**  
+1 407 538 8199  
[daniel.broussard@am.jll.com](mailto:daniel.broussard@am.jll.com)

[us.jll.com/retail](https://us.jll.com/retail)

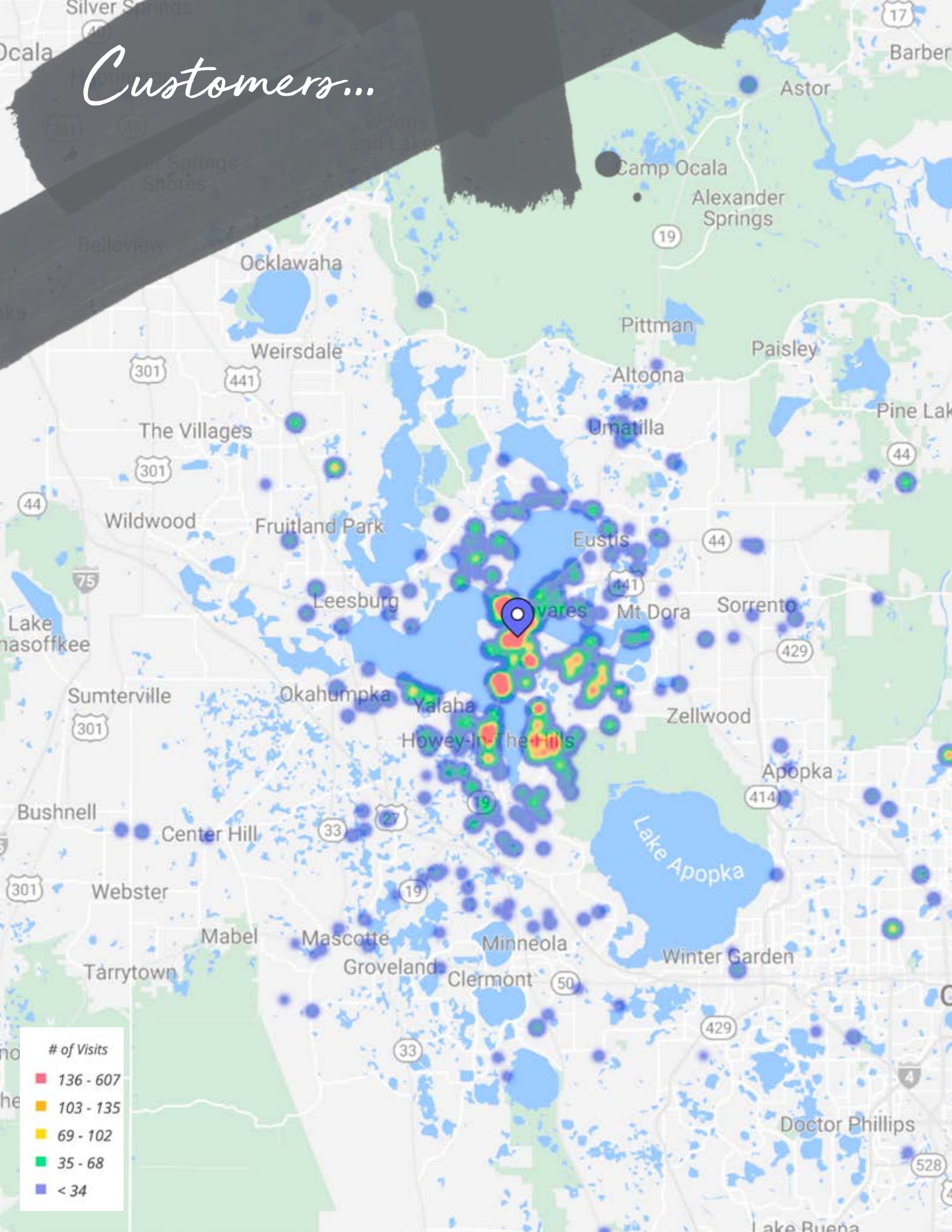
# Site Plan



	#	TENANT	SF
360°	21B	Available.....	11,884
	21A	Florida Auto Tag Agencies.....	12,000
	22	U.S. Coast Guard Recruiting .....	1,750
	24	U.S. Army Recruiting.....	3,990
	25	Florida Mobility .....	1,400
	26	Spring Tea .....	1,400
	27	Sushi Tomi Restaurant .....	1,400
	28	Salon.....	1,400
	29	P's VietMi Cafe .....	1,400
360°	30	Available.....	1,610



Customers...



# Interesting Facts

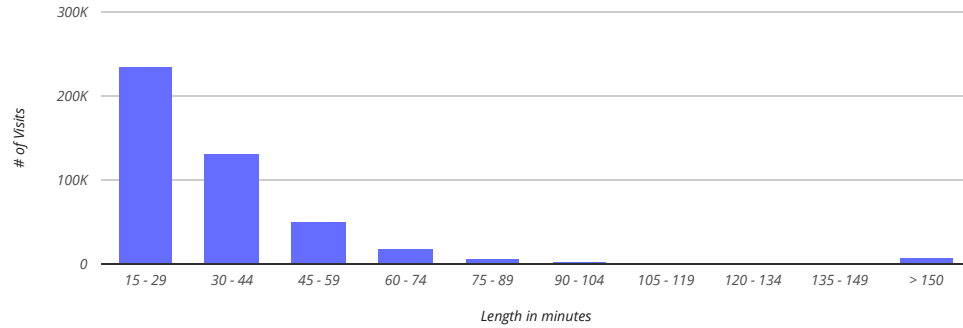
## Length-Of-Stay

(12 months)

● Publix / State Rd 19

Average Stay

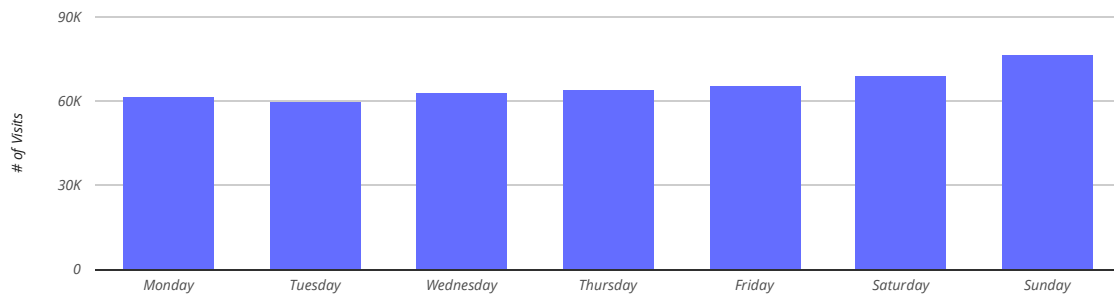
39 Min



## Daily Visits

(12 months)

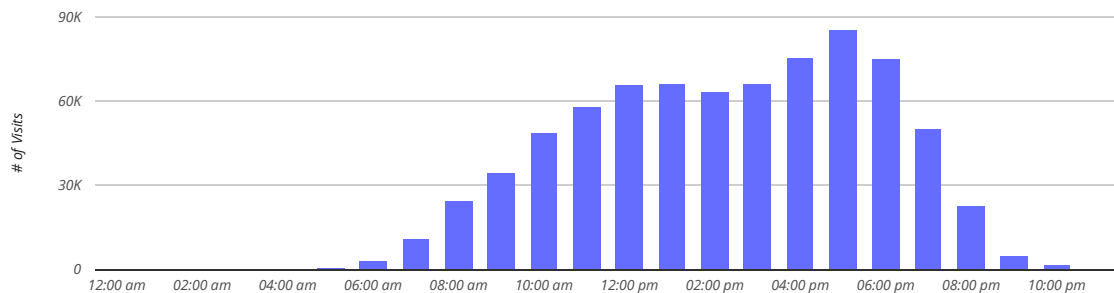
● Publix / State Rd 19



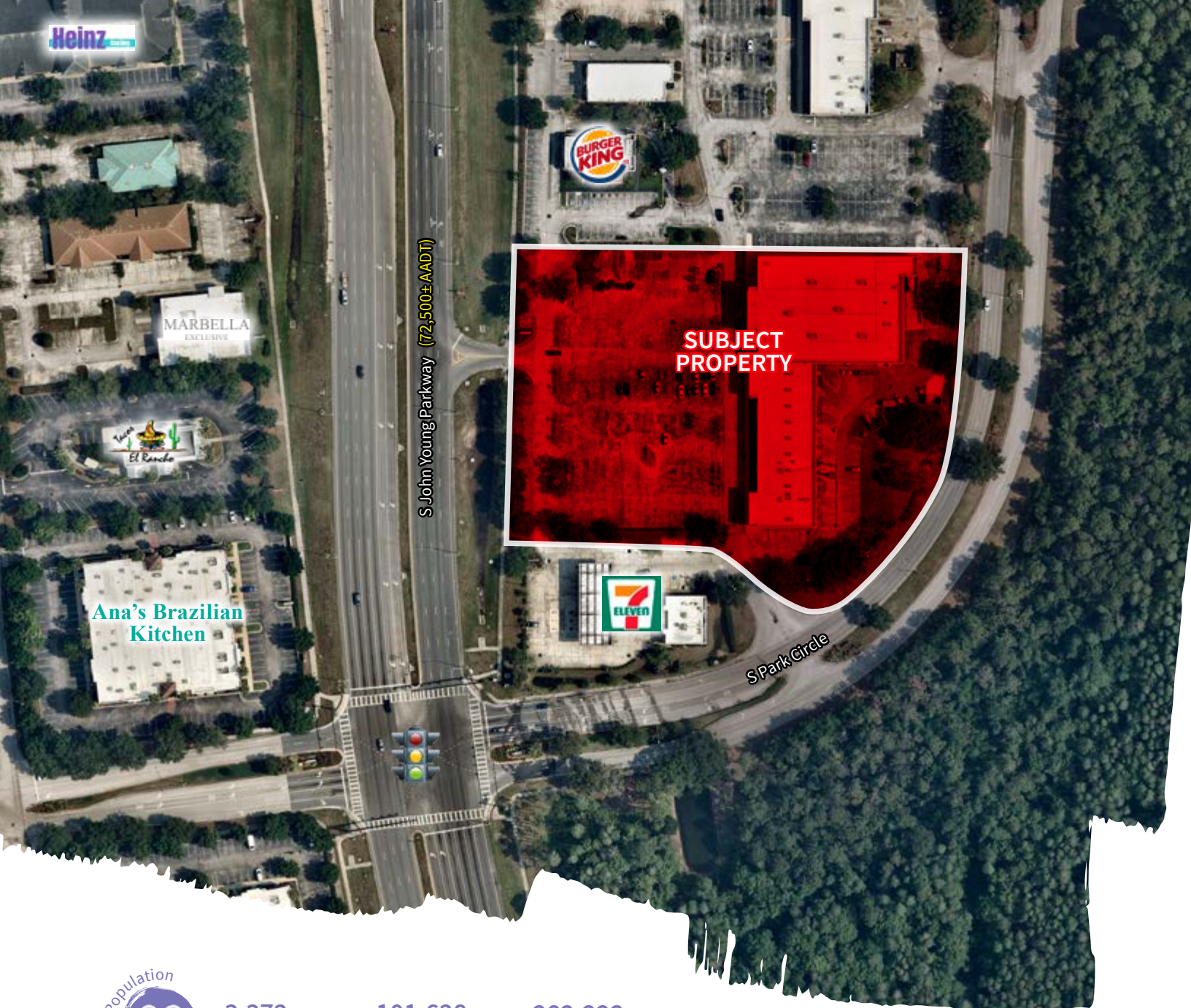
## Hourly Visits

(12 months)

● Publix / State Rd 19







**3,372**

5 minute drive

**101,628**

10 minute drive

**282,222**

15 minute drive



**1,232**

5 minute drive

**36,643**

10 minute drive

**101,142**

15 minute drive



**\$64,034**

5 minute drive

**\$56,626**

10 minute drive

**\$70,932**

15 minute drive



**1,330**

5 minute drive

**9,039**

10 minute drive

**18,630**

15 minute drive



**22,238**

5 minute drive

**125,216**

10 minute drive

**253,267**

15 minute drive

**Sand Lake Corners at South Park**  
**8421 S John Young Parkway**  
**Orlando, FL 32819**

**Daniel Broussard**

+1 407 538 8199

[daniel.broussard@am.jll.com](mailto:daniel.broussard@am.jll.com)

[us.jll.com/retail](http://us.jll.com/retail)

