



insee go

PRICE SMART

CENTREWEST

9710 & 9740 Scranton Road, San Diego, California 92121

CENTREWEST



CENTREWEST

9710 & 9740 Scranton Road, San Diego, California 92121

FEATURES

- Adjacent to the Courtyard Marriott and Karl Strauss Brewery
- On-site showers and lockers
- Easy access to I-805, SR-56 and I-5
- Walking distance to exceptional food and retail amenities at the Sorrento Court, that include Starbucks, Jamba Juice, Staples and Quiznos
- Covered and surface parking available
- Institutional ownership with local property management

SPECS

Project Size	116,170 SF	Fiber	Provided by AT&T and COX
Building Type	Steel frame	Roof Type	TPO 60mil "Cool Roof" system installed in 2011 with a 20 year warranty
Zoning	IL-2-1	Elevators	2 elevators in each building
APN (Acerage)	341-031-43 (4.49 acres)	HVAC	Suites are conditioned by individual heating/cooling units, supported by a central plant.
Year Built	1990	Parking Spaces	4.0/1,000 USF (85 covered stalls)
Drop Ceiling Height	9'	Electrical	480v/277v 3-phase and 208v/110v single phase
Floor-to-Floor Height	13' - 14'		



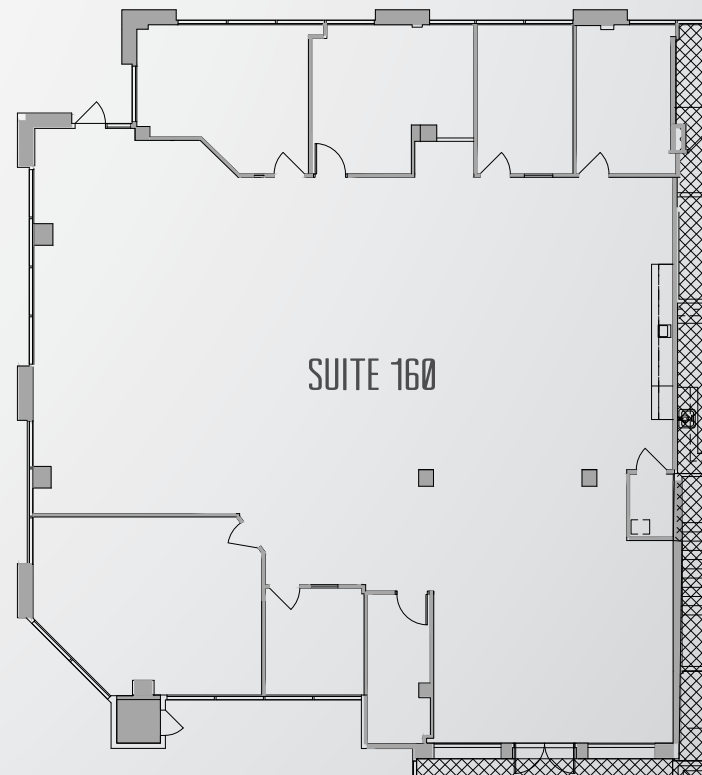
CENTREWEST

9710 & 9740 Scranton Road, San Diego, California 92121

AVAILABILITY - 9710 SCRANTON RD.

Suite 160
4,779 SF
Available Now
\$2.95 + E

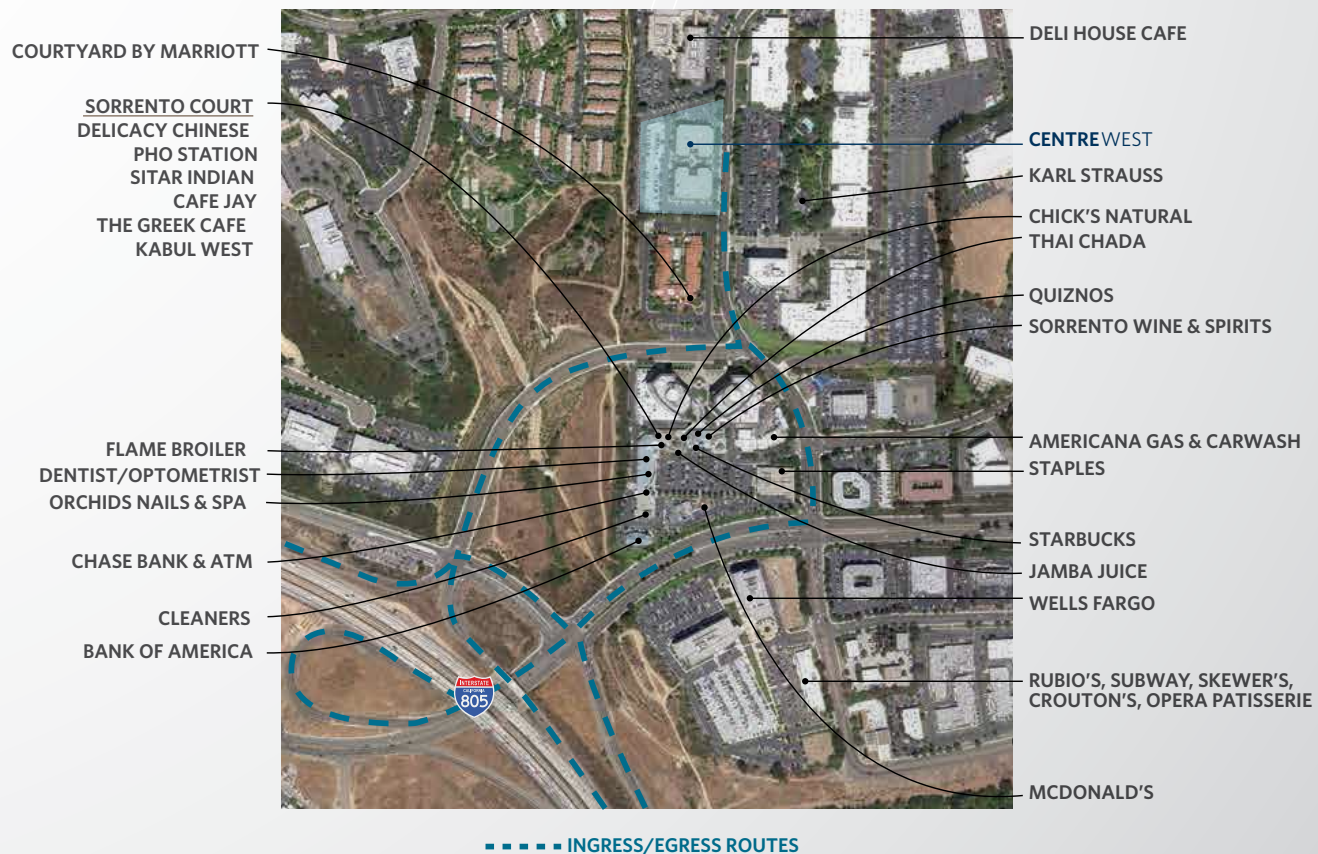
Ground floor creative office spec suite with exposed ceiling and double door entry off the main lobby.





CENTREWEST

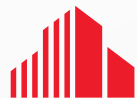
9710 & 9740 Scranton Road, San Diego, California 92121





CENTREWEST

9710 & 9740 Scranton Road, San Diego, California 92121



**CUSHMAN &
WAKEFIELD**

Brett Ward
+1 858 546 5470
brett.ward@cushwake.com
CA Lic. 01426040

Michael Cassolato
+1 858 546 5434
michael.cassolato@cushwake.com
CA Lic. 01893847

4747 Executive Drive, Suite 900
San Diego, CA 92121
main +1 858 546 5400
fax +1 858 630 6320
www.cushmanwakefield.com

Cushman & Wakefield Copyright 2015. No warranty or representation, express or implied, is made to the accuracy or completeness of the information contained herein, and same is submitted subject to errors, omissions, change of price, rental or other conditions, withdrawal without notice, and to any special listing conditions imposed by the property owner(s). As applicable, we make no representation as to the condition of the property (or properties) in question. K:\CentreWest\Interactive\centrewest-int.indd

[View Site Specific COVID-19 Prevention Plan](#)