

87 TAYLOR STREET
QUINCY, MICHIGAN

INDUSTRIAL FOR SALE OR LEASE
42,000 Square Feet Available



**SIGNATURE
ASSOCIATES**
KNOW SIGNATURE | KNOW RESULTS

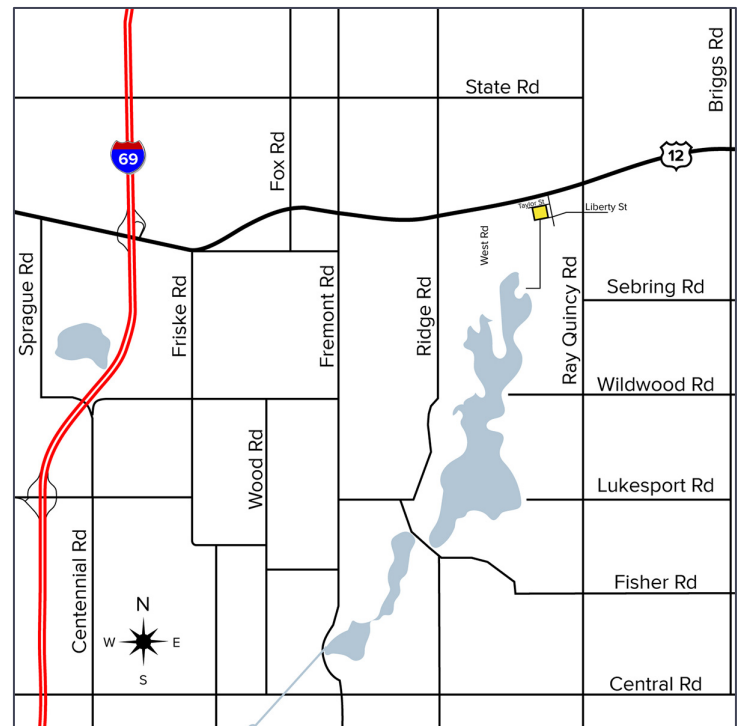
RECREATIONAL CULTIVATION &
PROCESSING FACILITY



VIEW
VIDEO

PROPERTY FEATURES

- 42,000 square feet available
- 2,000 square feet of office space
- 14'-16' clear height
- (2) 10x12 grade level doors, (3) truckwells
- Zoned industrial
- Located on 3.50 acres
- New roof on building in 2021
- Property qualifies as a recreational marijuana facility, specifically cultivation and processing
- Property is eligible for unlimited/stackable Class C cultivation licenses
- Buyer responsible for all due diligence pertaining to the cannabis licensing process
- More power available at site
- 1000 amps, 480 volts, 3-phase power
- Lease Rate: \$11.00/sq. ft. NNN
- Asking Price: \$3,150,000.00 (\$75.00/sq. ft.)



For more information, please contact:

JASON KELMIGIAN
(248) 359 0629

jkelmigian@signatureassociates.com

JIM MONTGOMERY
(248) 359 0614

jmontgomery@signatureassociates.com

SIGNATURE ASSOCIATES
One Towne Square, Suite 1200
Southfield, MI 48076
www.signatureassociates.com

87 Taylor Street – Quincy, Michigan

Industrial For Sale or Lease

42,000
Square Feet
AVAILABLE

Additional Photos



For more information, please contact:

JASON KELMIGIAN

(248) 359 0629

jkelmigian@signatureassociates.com

JIM MONTGOMERY

(248) 359 0614

jmontgomery@signatureassociates.com

SIGNATURE ASSOCIATES

One Towne Square, Suite 1200

Southfield, MI 48076

www.signatureassociates.com

87 Taylor Street – Quincy, Michigan

Industrial For Sale or Lease

42,000
Square Feet
AVAILABLE

Additional Photos



For more information, please contact:

JASON KELMIGIAN

(248) 359 0629

jkelmigian@signatureassociates.com

JIM MONTGOMERY

(248) 359 0614

jmontgomery@signatureassociates.com

SIGNATURE ASSOCIATES

One Towne Square, Suite 1200

Southfield, MI 48076

www.signatureassociates.com

87 Taylor Street – Quincy, Michigan

Industrial For Sale or Lease

42,000
Square Feet
AVAILABLE

Aerial



For more information, please contact:

JASON KELMIGIAN
(248) 359 0629
jkelmigian@signatureassociates.com

JIM MONTGOMERY
(248) 359 0614
jmontgomery@signatureassociates.com

SIGNATURE ASSOCIATES
One Towne Square, Suite 1200
Southfield, MI 48076
www.signatureassociates.com

Information is subject to verification and no liability for errors or omissions is assumed. Price is subject to change and listing withdrawal.