

HOWELL, NJ - POWER CENTER

4801-4821 US HIGHWAY 9, HOWELL, NJ 07731



OFFERING SUMMARY

Available SF: 24,630 SF
Lease Rate: Call for Details
Building Size: 24,630 SF

NEIGHBORING TENANTS



PROPERTY OVERVIEW

Available Immediately: Retail space inside 435,000 power center in Howell NJ

PROPERTY HIGHLIGHTS

- Immediately Next to Target
- 435,000 SF Power Center
- Available Immediately
- Excellent Visibility & Signage
- Join Target and Lowes!

FOR MORE INFORMATION CONTACT:

MARK HANDWERKER

201.703.9700 x131
mhandwerker@thegoldsteingroup.com

Licensed Real Estate Broker | 45 EISENHOWER DRIVE | SUITE 500 | PARAMUS, NJ 07652

All information is from sources deemed reliable and is submitted subject to errors, omissions, change of price, terms, rental, prior sale and withdrawal without notice.



THEGOLDSTEINGROUP.COM

HOWELL, NJ - POWER CENTER

4801-4821 US HIGHWAY 9, HOWELL, NJ 07731



FOR MORE INFORMATION CONTACT:

MARK HANDWERKER

201.703.9700 x131
mhandwerker@thegoldsteingroup.com

Licensed Real Estate Broker | 45 EISENHOWER DRIVE | SUITE 500 | PARAMUS, NJ 07652

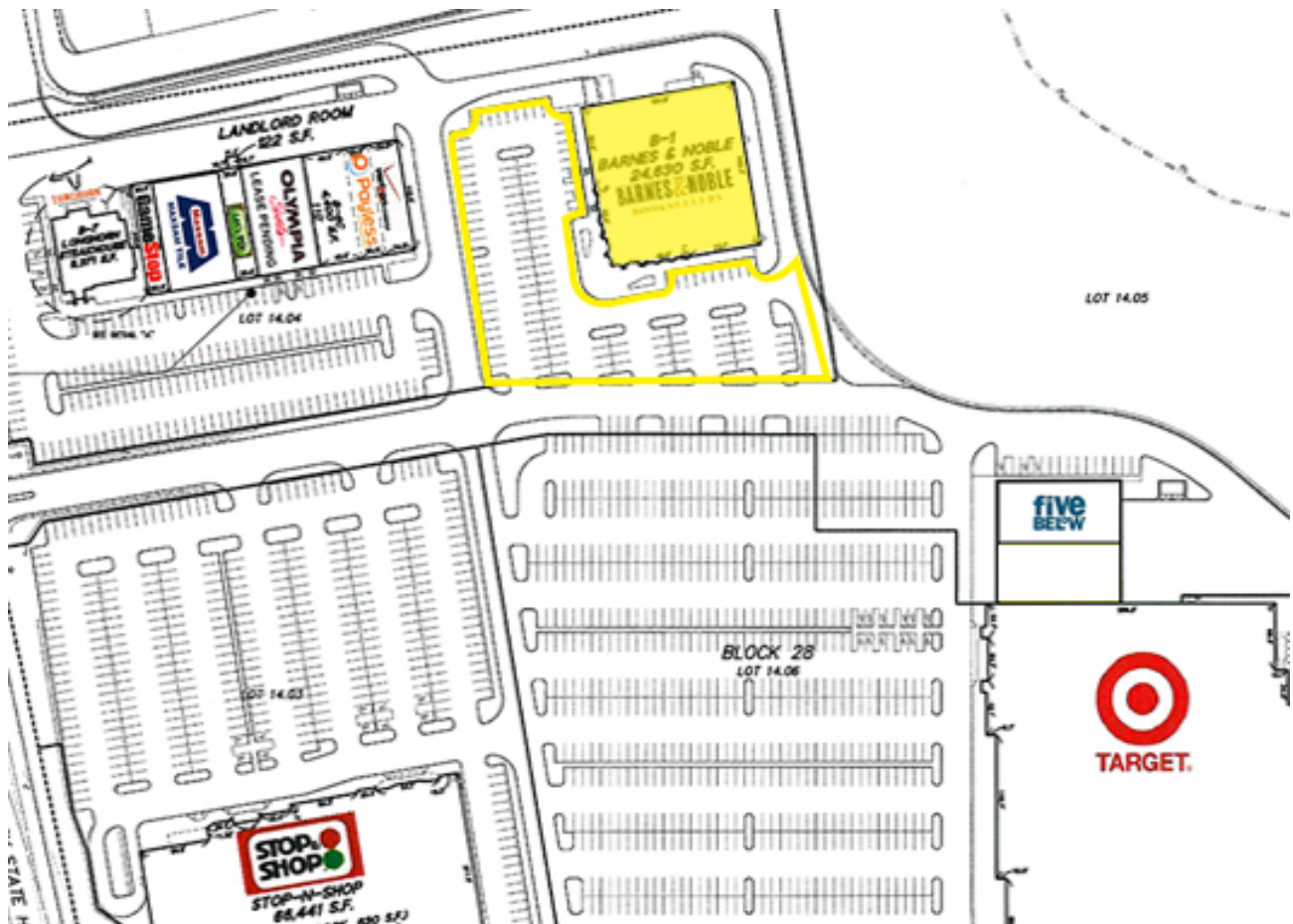
All information is from sources deemed reliable and is submitted subject to errors, omissions, change of price, terms, rental, prior sale and withdrawal without notice.



THEGOLDSTEINGROUP.COM

HOWELL, NJ - POWER CENTER

4801-4821 US HIGHWAY 9, HOWELL, NJ 07731



FOR MORE INFORMATION CONTACT:

MARK HANDWERKER

201.703.9700 x131

mhandwerker@thegoldsteingroup.com

Licensed Real Estate Broker | 45 EISENHOWER DRIVE | SUITE 500 | PARAMUS, NJ 07652

All information is from sources deemed reliable and is submitted subject to errors, omissions, change of price, terms, rental, prior sale and withdrawal without notice.



THEGOLDSTEINGROUP.COM

HOWELL, NJ - POWER CENTER

4801-4821 US HIGHWAY 9, HOWELL, NJ 07731



FOR MORE INFORMATION CONTACT:

MARK HANDWERKER

201.703.9700 x131
mhandwerker@thegoldsteingroup.com

Licensed Real Estate Broker | 45 EISENHOWER DRIVE | SUITE 500 | PARAMUS, NJ 07652

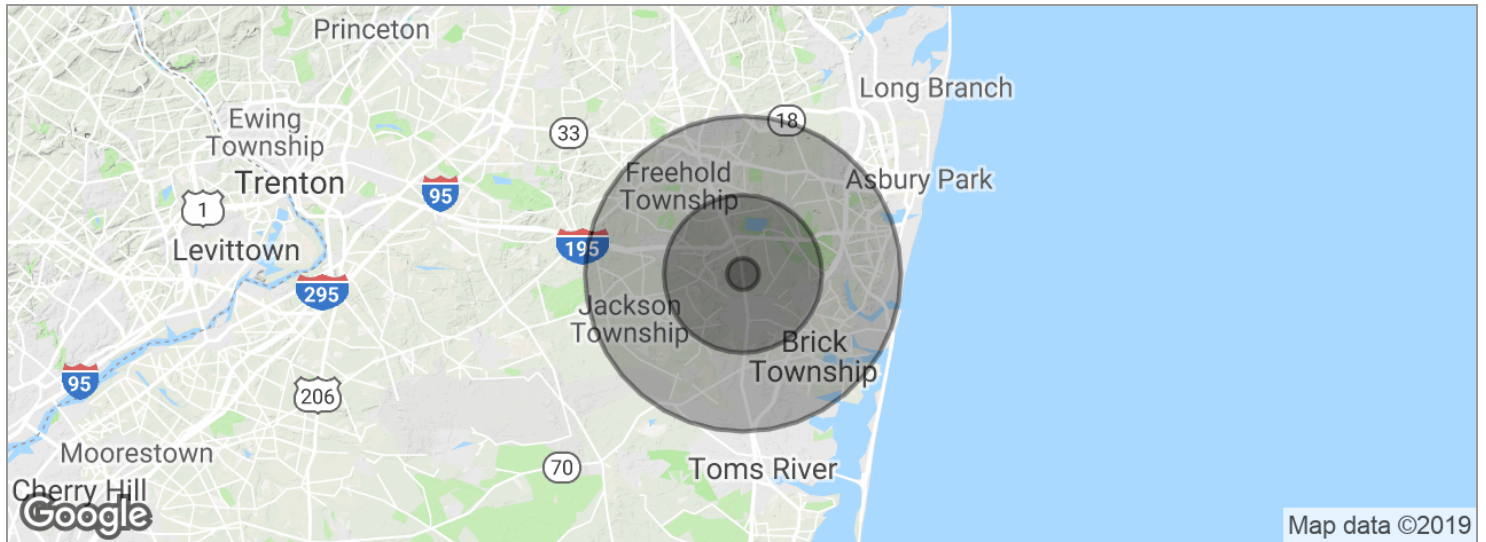
All information is from sources deemed reliable and is submitted subject to errors, omissions, change of price, terms, rental, prior sale and withdrawal without notice.



THEGOLDSTEINGROUP.COM

HOWELL, NJ - POWER CENTER

4801-4821 US HIGHWAY 9, HOWELL, NJ 07731



POPULATION	1 MILE	5 MILES	10 MILES
Total population	4,653	162,529	445,802
Median age	36.9	28.0	38.6
Median age (Male)	35.2	27.0	37.3
Median age (Female)	38.6	28.9	39.7
HOUSEHOLDS & INCOME	1 MILE	5 MILES	10 MILES
Total households	1,429	45,378	159,199
# of persons per HH	3.3	3.6	2.8
Average HH income	\$111,433	\$79,753	\$81,986
Average house value	\$344,516	\$380,590	\$357,879

* Demographic data derived from 2010 US Census

FOR MORE INFORMATION CONTACT:

MARK HANDWERKER

201.703.9700 x131
mhandwerker@thegoldsteingroup.com

Licensed Real Estate Broker | 45 EISENHOWER DRIVE | SUITE 500 | PARAMUS, NJ 07652

All information is from sources deemed reliable and is submitted subject to errors, omissions, change of price, terms, rental, prior sale and withdrawal without notice.



PROUD MEMBER OF

RETAIL BROKERS NETWORK

THEGOLDSTEINGROUP.COM