



**SITE**

**FOR GROUND LEASE**

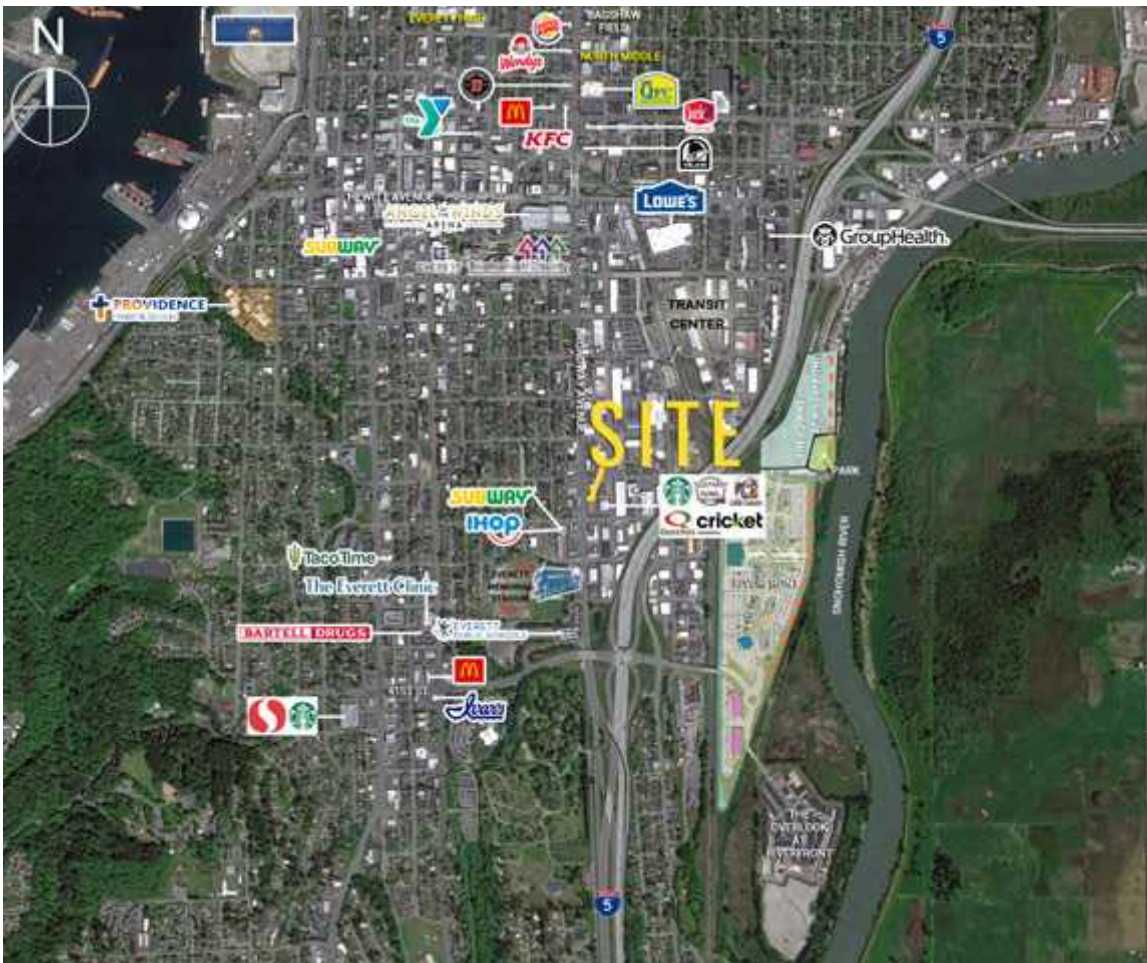
3615 Broadway Avenue  
Everett, Washington 98201



**3615 BROADWAY AVENUE LAND**

Steve Erickson | Larry Cocks

First Western Properties, Inc. | 425.822.5522 | fwp-inc.com  
11621 97th Lane NE, Kirkland, Washington 98034



## 3615 BROADWAY AVENUE:

- Available: 0.22 Acres (9,600 SF +-)
- Zoned BMU (Broadway Mixed-Use)
- Adjacent to Busy Starbuck's with Drive Thru
- Near Memorial Stadium and Funko Field - Home of Everett Aquasox
- Traffic Counts: 29,632 ADT on Broadway
- Contact Broker for Rates and Details



Population



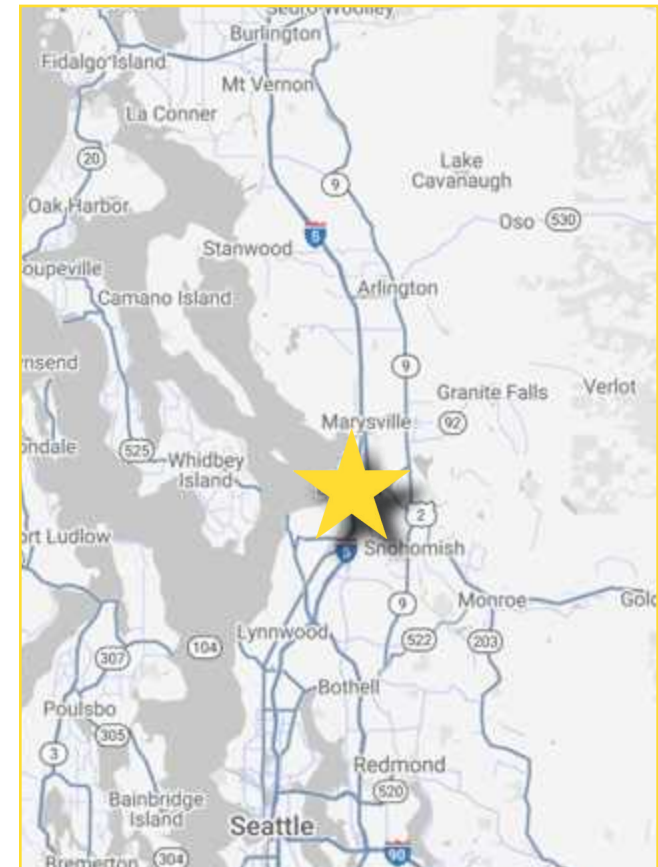
Average HH Income



Daytime Population

Regis - 2019

	Population	Average HH Income	Daytime Population
Mile 1	12,894	\$64,028	24,476
Mile 3	62,123	\$78,746	41,206
Mile 5	132,590	\$85,057	67,045





**EVERETT, WA** is located 25 miles north of Seattle on tranquil Port Gardner Bay. Everett is equal parts charming coastal hamlet & thriving commercial hub. Everett enjoys one of the most enviable locales in the Pacific Northwest & an outstanding quality of life. As the Snohomish county Seat, Everett is the County's largest city and the area's center for economic development. Companies locating to Everett have access to a variety of business incentives, from industry-specific tax breaks to location-based tax deferrals.

KIRKLAND | TACOMA | PORTLAND | SEATTLE



**RETAIL FOCUSED. RESULTS DRIVEN.**

**STEVE ERICKSON**

425.822.5522  
serickson@fwp-inc.com

**LARRY COCKS**

425.250.3274  
larry@fwp-inc.com



First Western Properties, Inc. | 425.822.5522  
11621 97th Lane NE Kirkland, WA 98034 | fwp-inc.com

© First Western Properties, Inc. DISCLAIMER: The above information has been secured from sources believed to be reliable, however, no representations are made to its accuracy. Prospective tenants or buyers should consult their professional advisors and conduct their own independent investigation. Properties are subject to change in price and/or availability without notice.